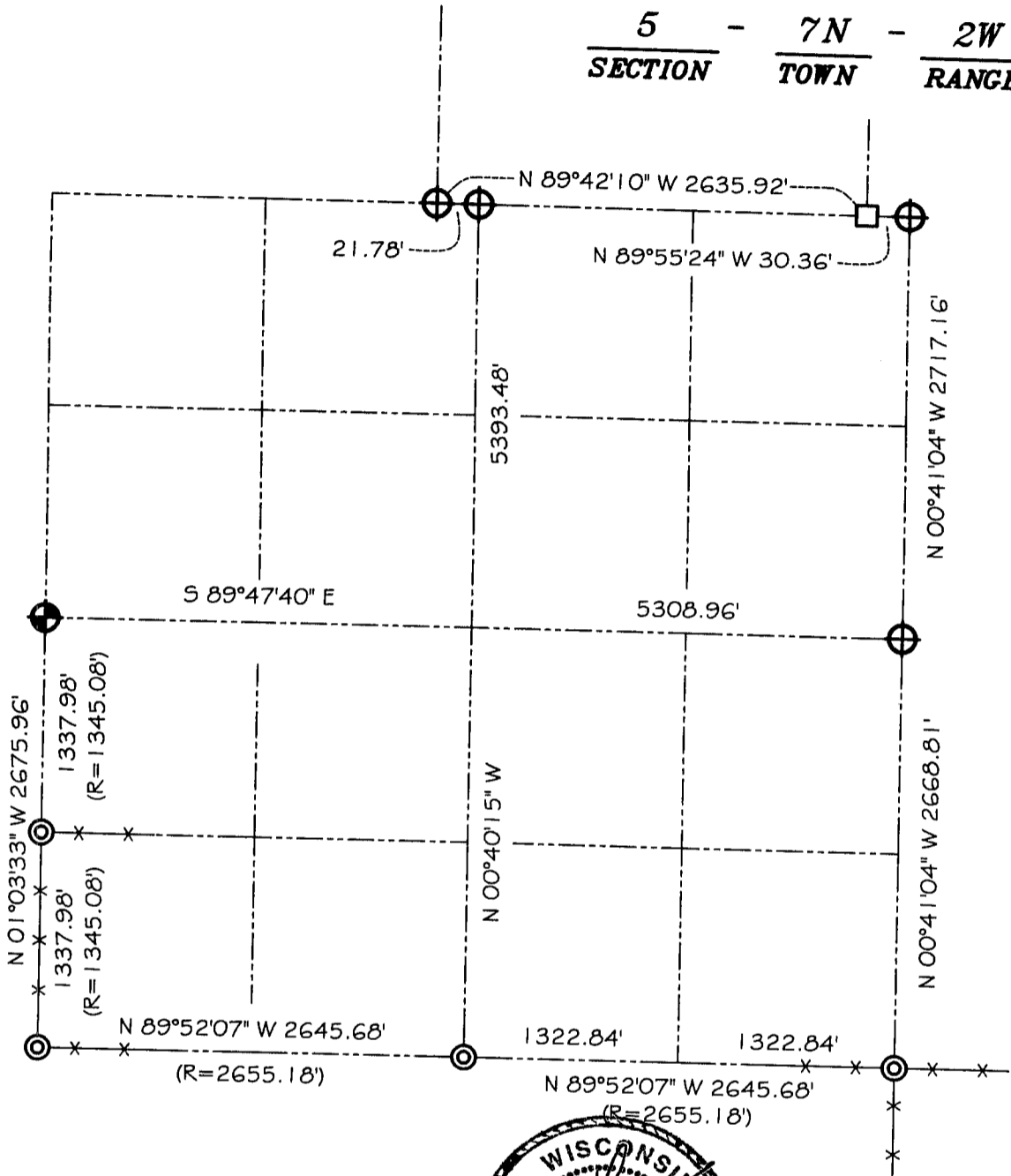






# GRANT COUNTY SECTION SUMMARY

$\frac{5}{\text{SECTION}}$  -  $\frac{7N}{\text{TOWN}}$  -  $\frac{2W}{\text{RANGE}}$



### LEGEND

-  NO. 8 X 30" REBAR SET WITH GRANT COUNTY ALUMINUM CAP
  -  NO. 8 REBAR WITH ALUMINUM CAP FOUND
  -  NO. 6 REBAR FOUND
  -  2" IRON PIPE FOUND
- (R= ) RECORDED AS - FROM 1889 SURVEY



### NOTE:

Relationships of all section corners to other section corners shall be shown hereon by bearing and distance or grid coordinates  
Show or describe bearing reference



BEARINGS REFERENCED TO THE NORTH-SOUTH 1/4 LINE OF SECTION 4, WHICH IS ASSUMED TO BEAR N 00°40'15" W.