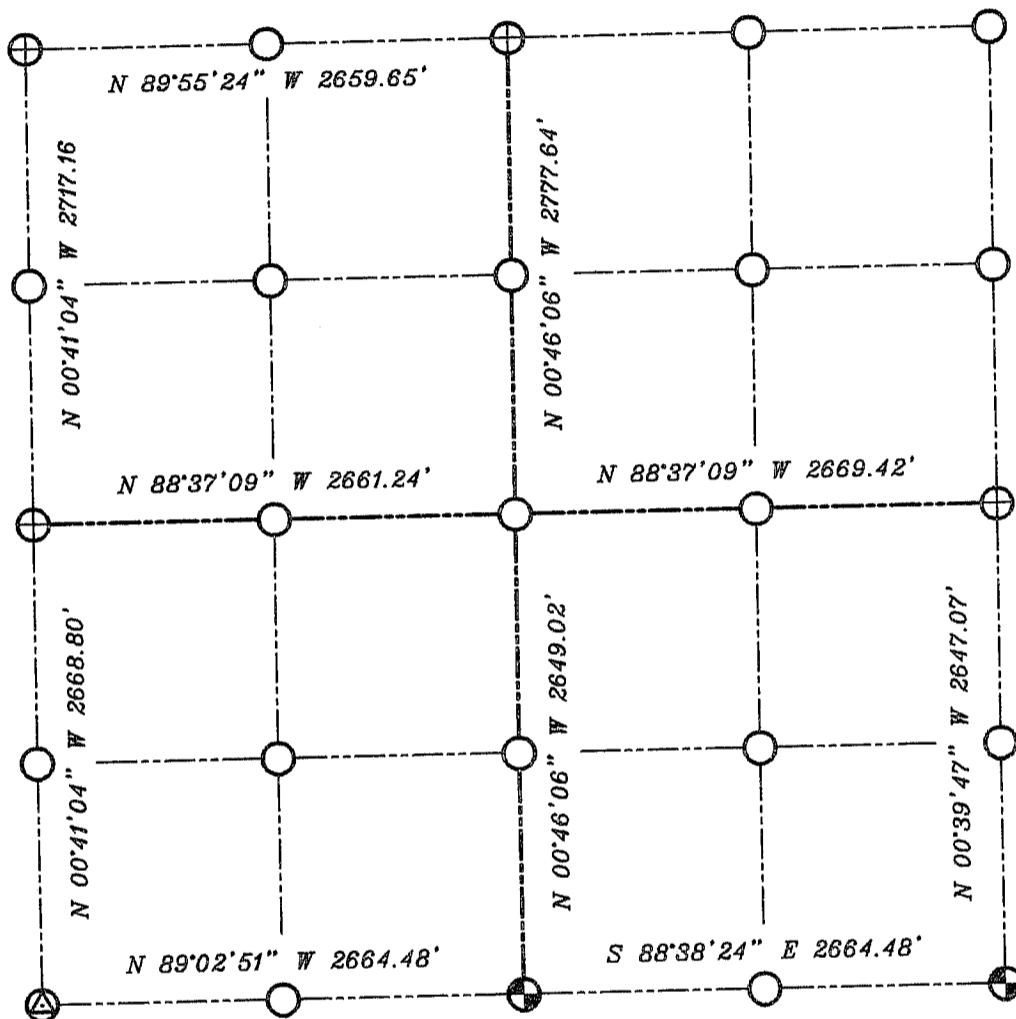


# GRANT COUNTY SECTION SUMMARY

$\frac{4}{\text{SECTION}} - \frac{7N}{\text{TOWN}} - \frac{2W}{\text{RANGE}}$



### LEGEND

- NO. 8 X 30" REBAR SET WITH GRANT COUNTY ALUMINUM CAP
- EXISTING NO. 8 REBAR WITH GRANT COUNTY ALUMINUM CAP
- NO. 6 REBAR FOUND



Relationships of all section corners to other section corners shall be shown hereon by bearing and distance or grid coordinates  
 Show or describe bearing reference



BEARINGS REFERENCED TO THE NORTH - SOUTH 1/4 LINE OF SECTION 4, WHICH IS ASSUMED TO BEAR N 00°46'06" W.