

U.S. PUBLIC LAND SURVEY MONUMENT RECORD - GRANT COUNTY, WI

Section 31, Town 7 North Range 2 West, Town of Hickory Grove (a)

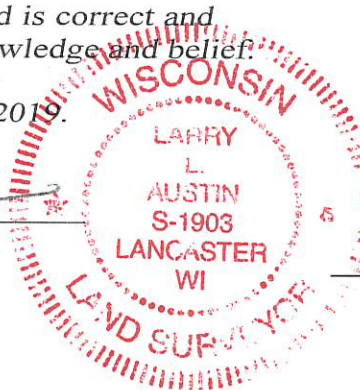
NOTE: This form is intended and designed to fulfill all requirements of the Wisconsin Administrative Code Chapter A-E 7.08, U.S. Public Land Survey Monument Record (3) (a) (b) (c) (d) (e) (f) (g) (h) (i).

CERTIFICATE: (i)

I, Larry L. Austin, Wisconsin Professional Land Surveyor, do hereby certify that the corner location on this record was determined by me and/or under my direct supervision and that this U.S. Public Land Survey Monument Record is correct and complete to the best of my knowledge and belief.

Dated this 12th day of March, 2016.

*Larry L. Austin*  
Larry L. Austin, S-1903



⊕ = CORNER LOCATION

Grant County Coordinates:  
NAD 83 (2011)  
Northing: 590,737.05  
Easting: 830,852.19

HISTORY OF CORNER ESTABLISHMENT:

Original corner was set in 1832 by Lucius Lyon.  
Stuart Durkee measured the corner on Survey dated 9-15-1973, filed in GCA 311 (No mention of a monument at the corner).  
Thom Grenlie set a monument at the corner on a plat dated 10-8-1997, filed in Book 1, Page 6. I tied to the corner and a tie sheet dated 10-27-1999.

DESCRIPTION OF CORNER EVIDENCE FOUND: (b) (f) (g) (h)

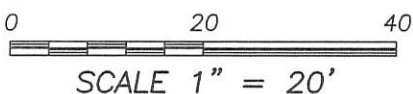
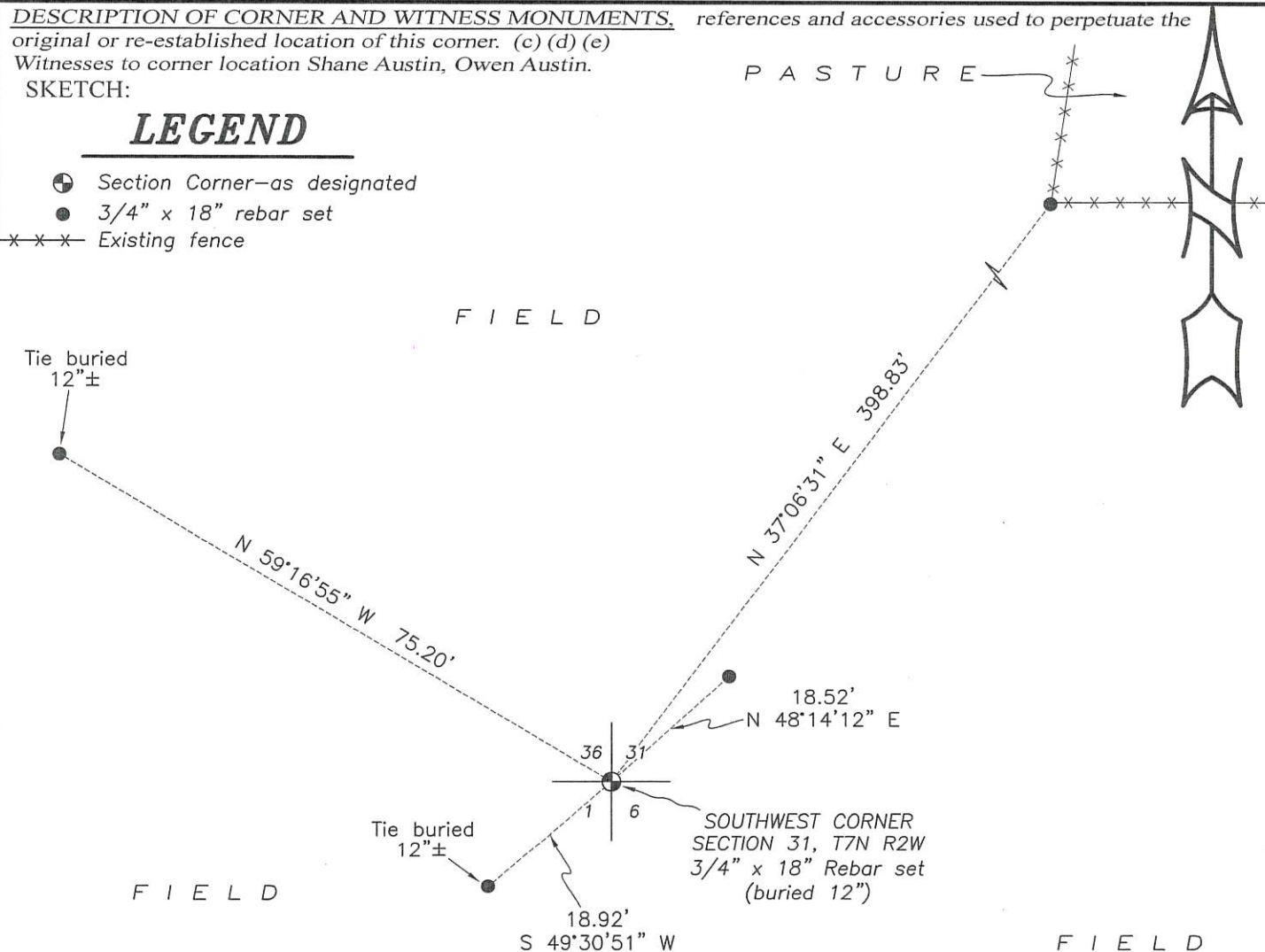
The previous fence has been removed. I found a disturbed monument and no ties. I reset the corner based upon a previous survey by Aaron Austin dated 12-10-2012 filed in Book 33, Page 8. I utilized the recorded distance of 2661.76' from the South 1/4 corner and the recorded distance of 2655.83' from the West 1/4 corner as shown on A. Austin's survey. I set four new ties after I verified the Monument's location with G.P.S. and E.D.M. methods.

DESCRIPTION OF CORNER AND WITNESS MONUMENTS. references and accessories used to perpetuate the original or re-established location of this corner. (c) (d) (e)

Witnesses to corner location Shane Austin, Owen Austin.  
SKETCH:

LEGEND

- ⊕ Section Corner—as designated
- 3/4" x 18" rebar set
- x-x-x Existing fence



72133

# GRANT COUNTY CERTIFIED LAND CORNER

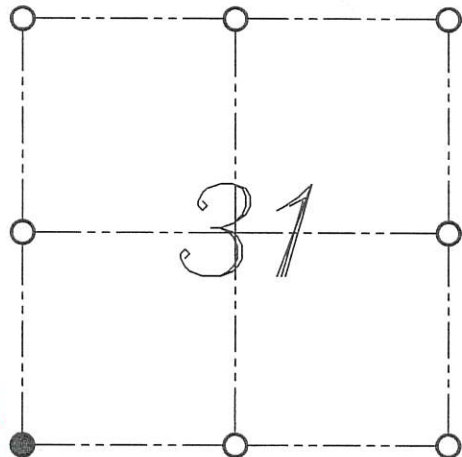
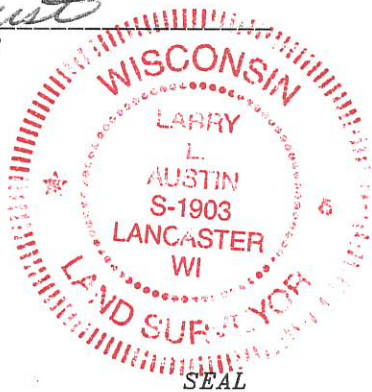
**CERTIFICATE:**

I, LARRY L. AUSTIN, DO HEREBY CERTIFY THAT ON 22<sup>nd</sup> DAY OF OCTOBER, 1999, I FOUND EVIDENCE OF THE SOUTHWEST CORNER OF SECTION 31, TOWN 7 NORTH, RANGE 2 WEST, OF THE FOURTH PRINCIPAL MERIDIAN, AND I RE-ESTABLISHED SAID CORNER ACCORDING TO THE WISCONSIN STATUTES AS SHOWN AND DESCRIBED HEREON.

CORNER NUMBER 133

DATED THIS 27<sup>th</sup> DAY OF OCTOBER, 1999

*Larry L. Austin*  
LARRY L. AUSTIN S-1903



● = CORNER LOCATION

SOUTHWEST CORNER OF SECTION 31, T 7 N R 2 W TOWN OF HICKORY GROVE

**HISTORY OF ORIGINAL CORNER ESTABLISHMENT:**

CORNER WAS SET IN 1832 BY SIBLEY. IN 1997 THOM GRENLIE SET A 1" IRON BAR AT THIS LOCATION.

**DESCRIPTION OF CORNER EVIDENCE FOUND:**

I FOUND GRENLIE'S 1" IRON BAR. I ACCEPTED IT'S LOCATION AFTER AN E.D.M. AND G.P.S. TRAVERSE OF THE AREA.

DESCRIPTION OF CORNER AND WITNESS MONUMENTS, REFERENCES AND ACCESSORIES USED TO PERPETUATE THE ORIGINAL OR RE-ESTABLISHED LOCATION OF THIS CORNER:  
WITNESS TO THE CORNER LOCATION: BOBBY SEDGWICK ; SHELBY BLINDERT

**SKETCH:**

