

2

72132

GRANT COUNTY CERTIFIED LAND CORNER

CERTIFICATE:

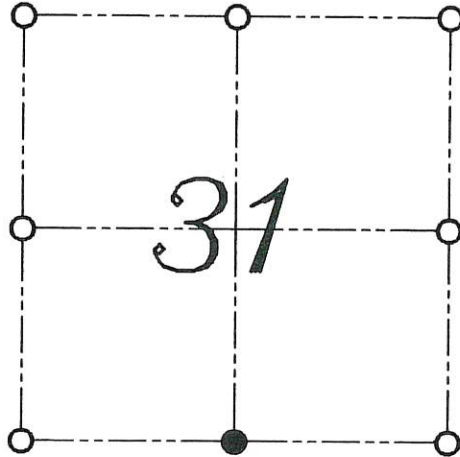
I, LARRY L. AUSTIN, DO HEREBY CERTIFY THAT ON 22nd DAY OF OCTOBER, 1999, I FOUND EVIDENCE OF THE SOUTH 1/4 CORNER OF SECTION 31, TOWN 7 NORTH, RANGE 2 WEST, OF THE FOURTH PRINCIPAL MERIDIAN, AND I RE-ESTABLISHED SAID CORNER ACCORDING TO THE WISCONSIN STATUTES AS SHOWN AND DESCRIBED HEREON.

DATED THIS 1st DAY OF NOVEMBER, 1999

Larry L. Austin
LARRY L. AUSTIN S-1903



CORNER NUMBER 132



● = CORNER LOCATION

SOUTH 1/4 CORNER OF SECTION 31, T 7 N R 2 W TOWN OF HICKORY GROVE

HISTORY OF ORIGINAL CORNER ESTABLISHMENT:

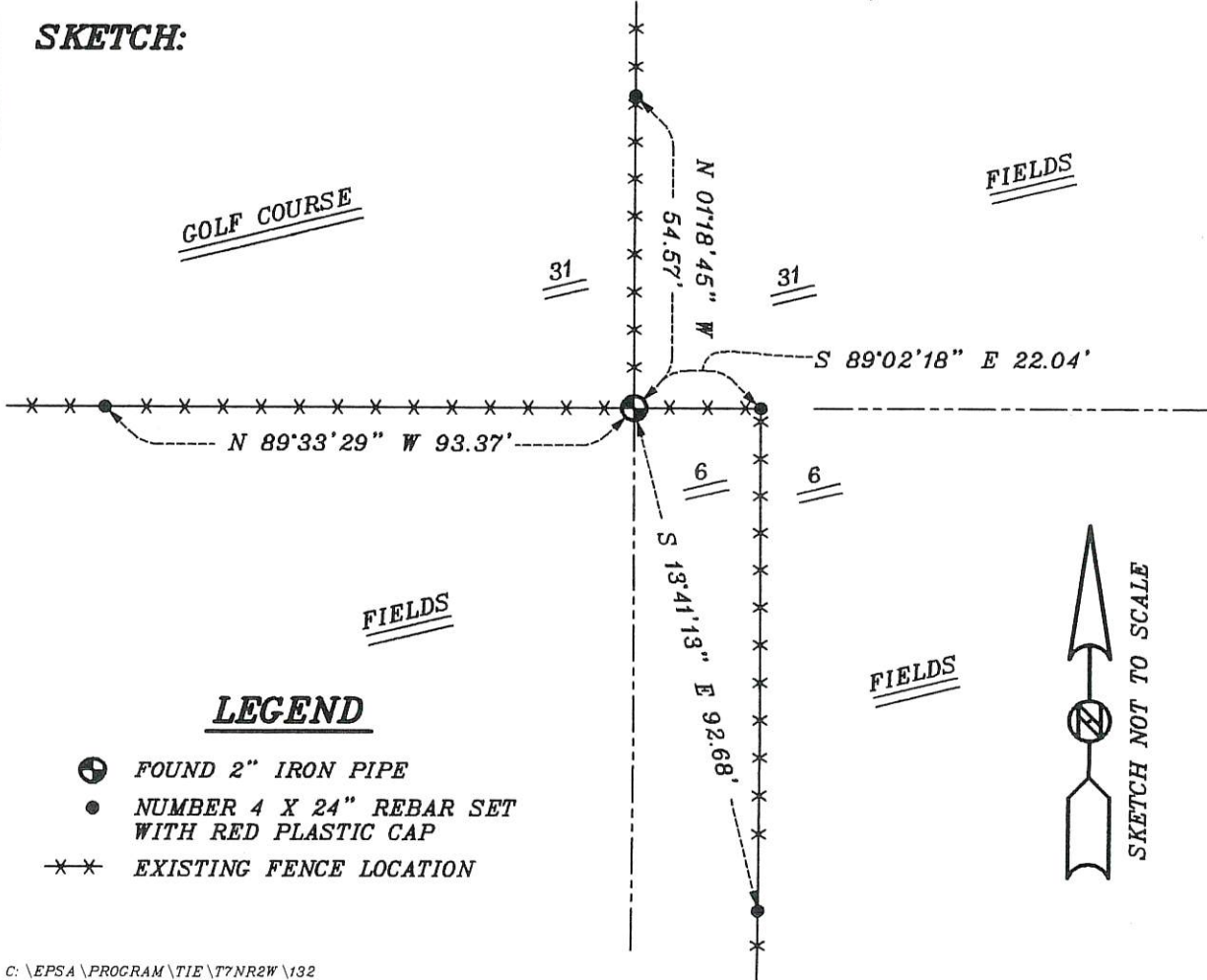
CORNER WAS SET IN 1832 BY SIBLEY. IN 1981 BRUCE BOWDEN SET A 2" IRON PIPE AT THIS LOCATION. IN 1997 THOM GRENLIE FOUND BOWDEN'S 2" IRON PIPE.

DESCRIPTION OF CORNER EVIDENCE FOUND:

I FOUND THE 2" IRON PIPE AND ACCEPTED IT'S LOCATION AFTER AN E.D.M. AND G.P.S. TRAVERSE OF THE AREA.

DESCRIPTION OF CORNER AND WITNESS MONUMENTS, REFERENCES AND ACCESSORIES USED TO PERPETUATE THE ORIGINAL OR RE-ESTABLISHED LOCATION OF THIS CORNER:
WITNESS TO THE CORNER LOCATION: BOBBY SEDGWICK ; SHELBY BLINDERT

SKETCH:



LEGEND

- ⊕ FOUND 2" IRON PIPE
- NUMBER 4 X 24" REBAR SET WITH RED PLASTIC CAP
- *** EXISTING FENCE LOCATION



132