

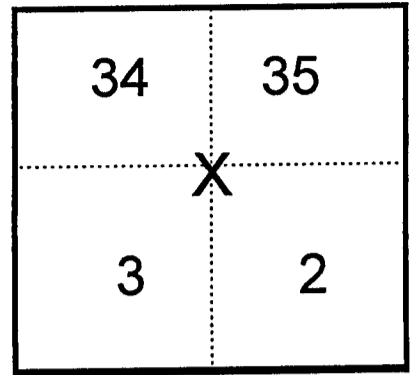
Note: This form is intended and designed to fulfill all requirements of Wisconsin Administrative Code, Chapter AE-7.08, U.S. Public Land Survey Monument Record (3)(a)(b)(c)(d)(e)(f)(g)(h)(i). Use additional sheets if necessary.

(a) The X Section, One Quarter corner common to Sections 2,3,34,35,

Township(s) 06,07 North, Range(s) 02 West.

State Plane Coordinates: N \_\_\_\_\_

Datum: \_\_\_\_\_ E \_\_\_\_\_

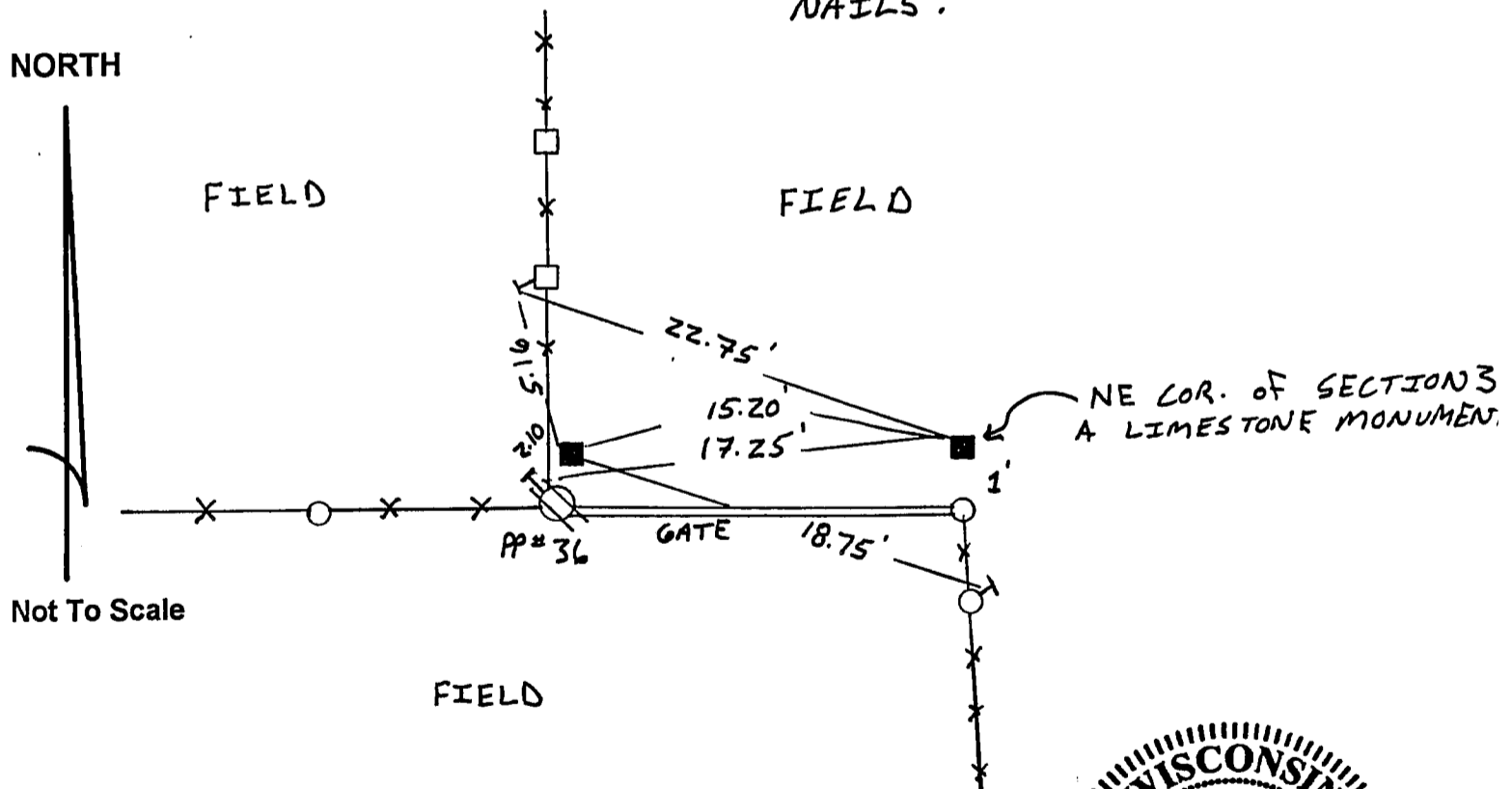


(b)(f)(h) Description of monument found at this corner and if it was accepted, state all evidence (material, testimonial, occupational, plats records, other monuments) used as a basis for accepting. If not accepted or nothing was found, state evidence used as basis for establishing location and what was set. If re-established through lost corner proportionate methods, indicate all monuments, distances and directions used.

I found the Corner, a Limestone Monument, and set Ties as shown.

(c)(d)(e) Plan view of corner with ties to at least four (4) witness monuments. If in disagreement with previously established corner, show the distances between the two corners and also indicate ties to disputed corner.

TIES ARE BERNTSEN SURVEY NAILS.



(I) Certify that the corner location on this record was determined by me or under my direction and control and that this U.S. Public Land survey Monument Record is correct and complete to the best of my knowledge and belief.



*Mathew D. Reigel*  
Signature

12/15/98  
Date

Filed for record in Grant County Surveyor's Office on \_\_\_\_\_ INDEX NO. \_\_\_\_\_