

GRANT COUNTY CERTIFIED LAND CORNER

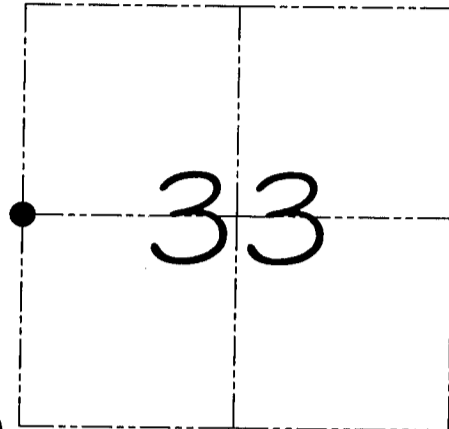
CORNER NUMBER 116

CERTIFICATE:

I, Larry L. Austin, do hereby certify that on the 14th day of January, 2000, I found no evidence of the West 1/4 corner of Section 33, Town 7 North, Range 2 West, of the 4th Principal Meridian, and I re-established said corner according to the Wisconsin statutes as shown and described hereon.

Dated this 3rd day of February, 2000

Larry L. Austin
Larry L. Austin S-1903



● = CORNER LOCATION

**WEST 1/4 CORNER OF
SECTION 33, T 7 N R 2 W
TOWN OF HICKORY GROVE**

HISTORY OF ORIGINAL CORNER ESTABLISHMENT:

Corner was originally set in 1833 by Harvey Parke.
No other record of the corner was found.

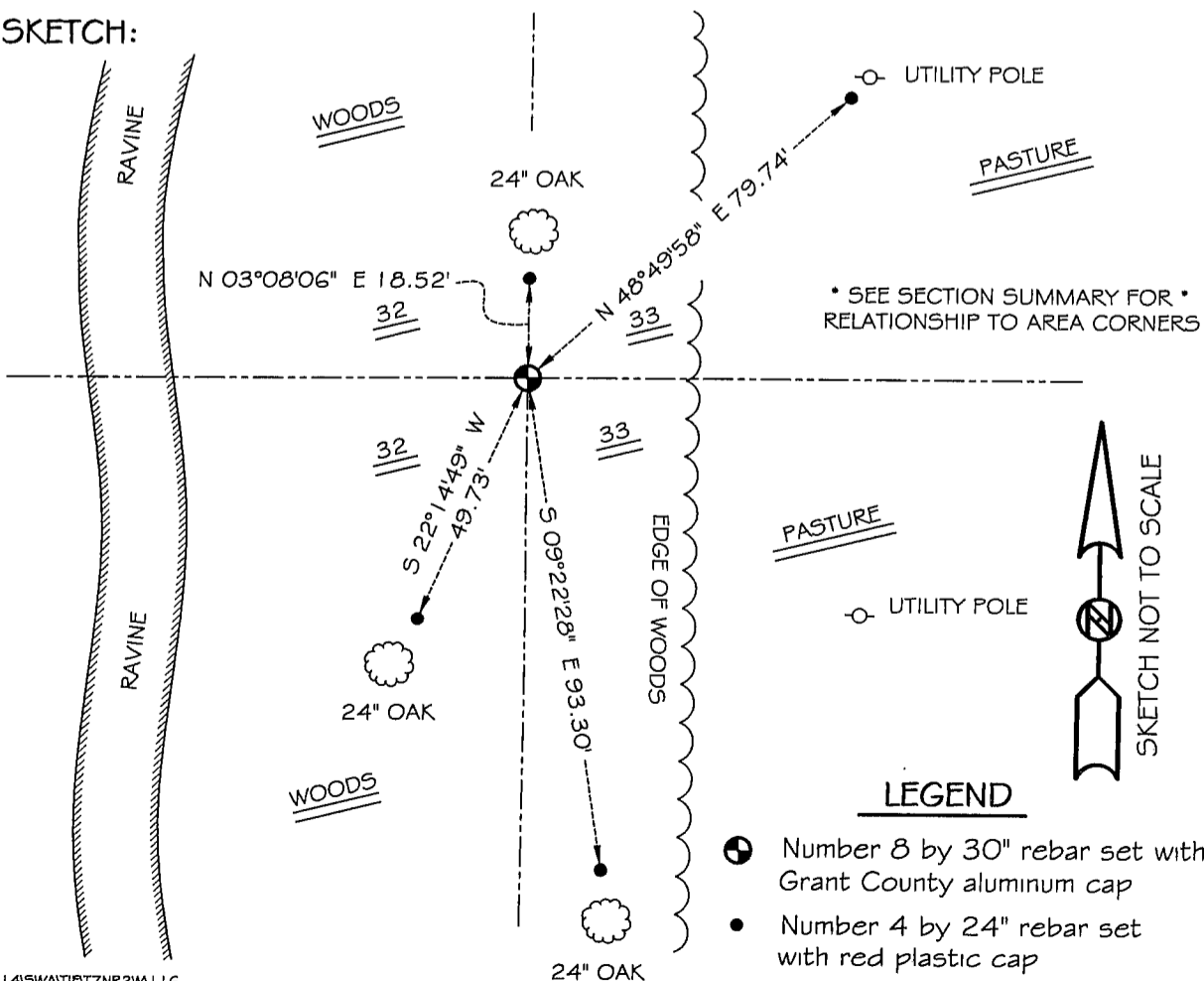
DESCRIPTION OF CORNER EVIDENCE FOUND:

I found no evidence to the location of the corner. I reset the corner based on a single proportion along the West line of Section 33. Verified this location using E.D.M. and G.P.S. methods.

DESCRIPTION OF CORNER AND WITNESS MONUMENTS, references and accessories used to perpetuate the original or re-established location of this corner

WITNESS TO THE CORNER LOCATION: SHELBY BLINDERT & BRIAN WINKERS

SKETCH:



* SEE SECTION SUMMARY FOR *
RELATIONSHIP TO AREA CORNERS

PASTURE

○ UTILITY POLE



SKETCH NOT TO SCALE

LEGEND

- Number 8 by 30" rebar set with Grant County aluminum cap
- Number 4 by 24" rebar set with red plastic cap