

U.S. PUBLIC LAND SURVEY MONUMENT RECORD - GRANT COUNTY, WI

Section 31, Town 7 North Range 2 West, Town of Hickory Grove (a)

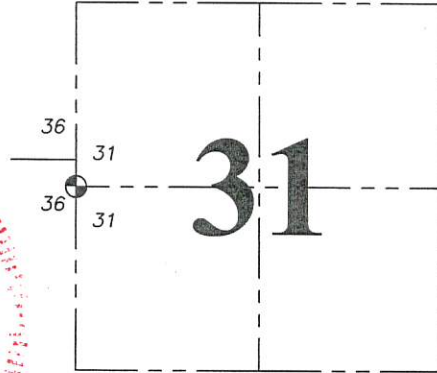
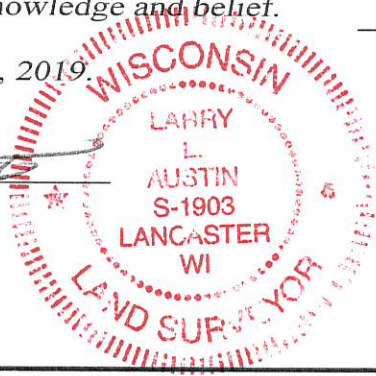
NOTE: This form is intended and designed to fulfill all requirements of the Wisconsin Administrative Code Chapter A-E 7.08, U.S. Public Land Survey Monument Record (3) (a) (b) (c) (d) (e) (f) (g) (h) (i).

CERTIFICATE: (i)

I, Larry L. Austin, Wisconsin Professional Land Surveyor, do hereby certify that the corner location on this record was determined by me and/or under my direct supervision and that this U.S. Public Land Survey Monument Record is correct and complete to the best of my knowledge and belief.

Dated this 12th day of March, 2019.

Larry L. Austin
Larry L. Austin, S-1903



⊕ = CORNER LOCATION

Grant County Coordinates:
NAD 83 (2011)
Northing: 593,392.87
Easting: 830,845.26

HISTORY OF CORNER ESTABLISHMENT:

Thom Grenlie set a monument at the corner on a plat dated 10-8-1997 filed in Book 1, Page 6. I prepared a tie sheet for the corner dated 11-1-1999. Bruce Bowden set a railroad spike for this corner and prepared a tie sheet dated 12-7-2017.

DESCRIPTION OF CORNER EVIDENCE FOUND: (b) (f) (g) (h)

I found a disturbed monument at the previous location as established by Grenlie and tied by myself. I found all 4 ties. I reset the corner at the recorded offset and online between the previously tied East 1/4 corner of Section 36 and the Southwest corner of Section 31. This checked very well to the existing ties. This location matches the previous surveys filed in Book 1, Page 6, Book 20, Page 57 and Book 33, Page 8 along with Right of Way Project 1650-02-22. The monument location was verified with G.P.S. and E.D.M. methods

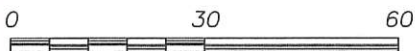
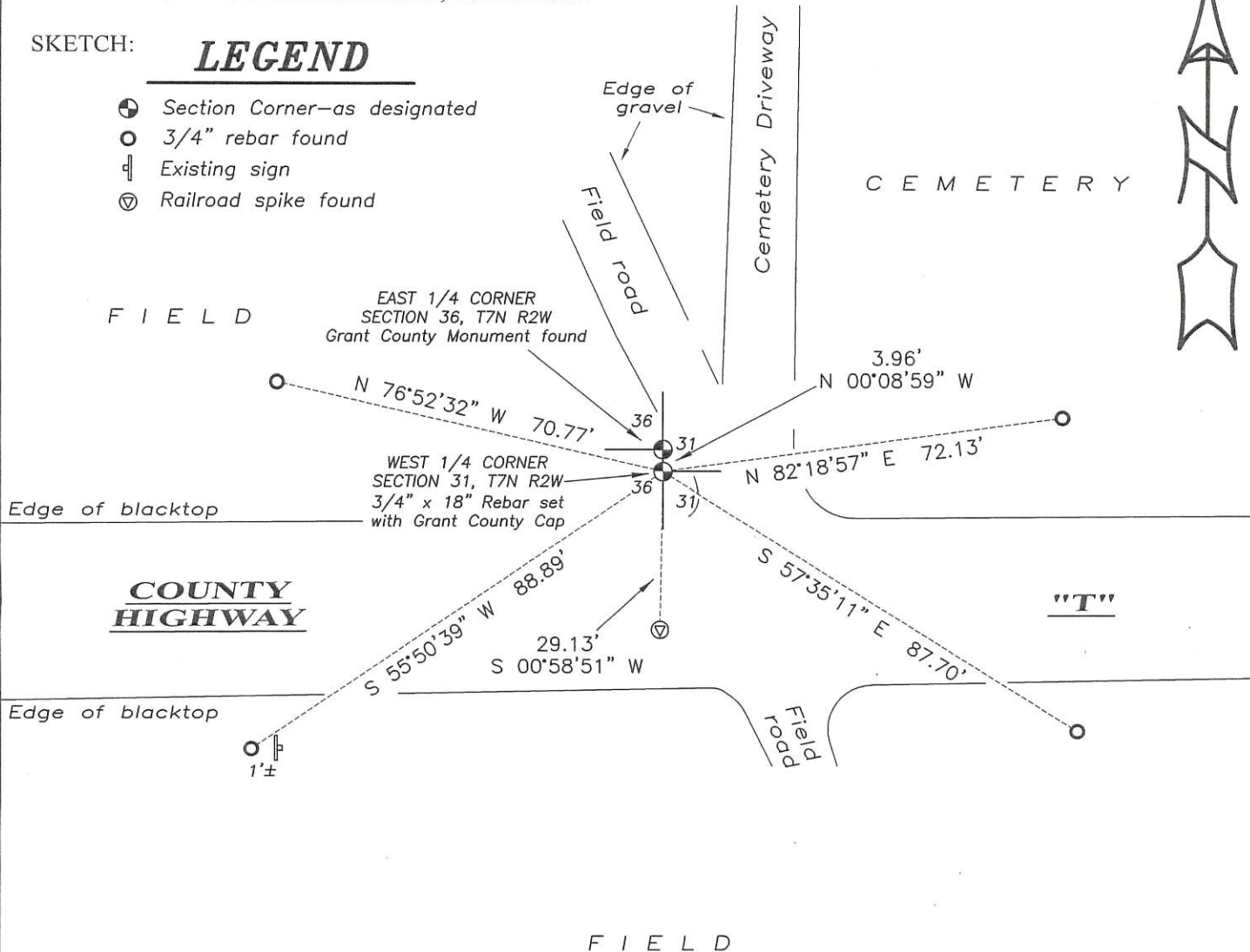
DESCRIPTION OF CORNER AND WITNESS MONUMENTS, references and accessories used to perpetuate the original or re-established location of this corner. (c) (d) (e)

Witnesses to corner location Shane Austin, Owen Austin.

SKETCH:

LEGEND

- ⊕ Section Corner—as designated
- 3/4" rebar found
- ⊥ Existing sign
- ⊕ Railroad spike found



SCALE 1" = 30'

72114

Grant County Certified U.S. Public Land Survey Monument Record

DATUM : NAD83 (2011) WISCORS

GRANT COUNTY COORDINATES

CONTROL IS A COMBINATION OF GPS AND CONVENTIONAL FIELD CONTROL

NORTH 593363.74

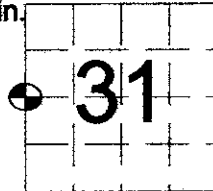
EAST 830844.76

The West quarter corner of Section 31, Town 7 North,
Range 2 West, Town of Hickory Grove, Grant County, Wisconsin.


(A) Identify the corner by reference to the U.S. public land survey system.

WITNESS TO CORNER LOCATION:

Bruce D. Bowden



(E) The corner was restored through acceptance of
(1) an obliterated evidence location
(2) a found perpetuated location
(3) lost corner proportionate methods

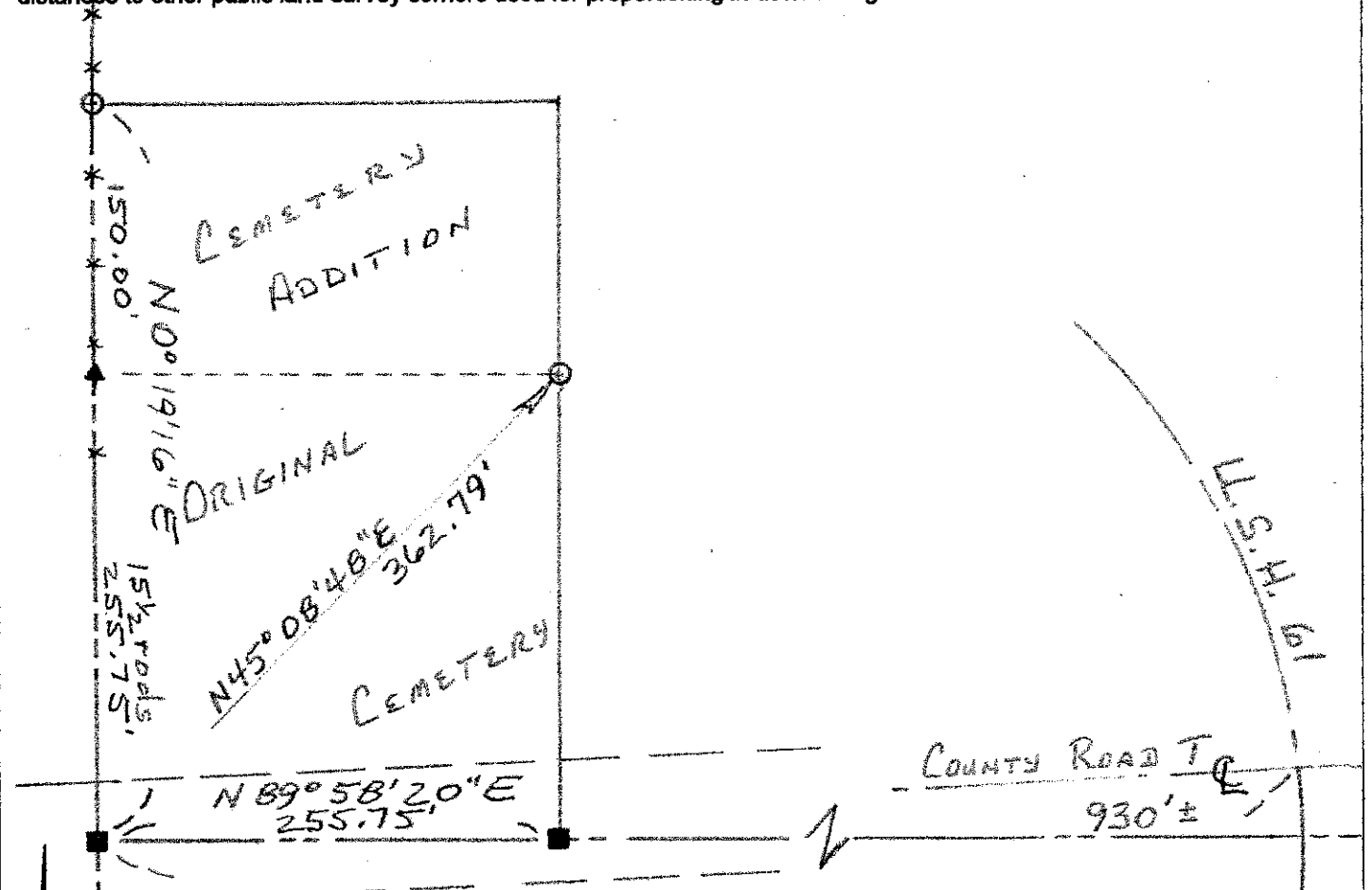
 = Corner monument restored or maintained.

Sec. 31, T 7 N, R 2 W

(B) Describe any record evidence, monument evidence, occupational evidence, testimonial evidence or any other material evidence you considered, and whether the monument was placed or found.

I set this monument from a direct tie to the adjoining cemetery.

(C, D, F, G) Plan view drawing below, provide reference ties to at least 4 witness monuments, or, if the location is within a municipality, to at least 2 witness monuments. Depict the relevant monuments and reference ties in sufficient detail to enable accurate relocation of the corner monument, if disturbed. Indicate North. Describe any material discrepancy between the location of the corner as restored or reestablished and the location of that corner as previously monumented by distance and direction. Show the discrepancy on the plan view and the distances between the corner as previously monumented. If the corner was reestablished through lost corner proportionate methods, show the method, including the directions and distances to other public land survey corners used for proportioning in determining the corner location.



LEGEND

■ Railroad Spike Set

▲ 1 1/2" Pipe Found

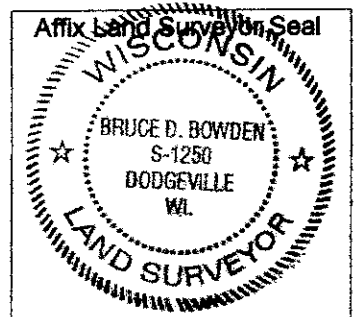
--- Fence

○ 1 1/2" x 30" Pipe Set

Scale : 1" = 100'

(H) I, Bruce D. Bowden do certify that the corner location shown on this record was determined by me or under my direction and control and that this U.S. Public Land Survey Monument Record is correct and complete to the best of my knowledge and belief.

Bruce D. Bowden Dec 7, 2017
Signature Date



Romportl No. 20702312040
Grant Co. Index No. 114

GRANT COUNTY CERTIFIED LAND CORNER

CERTIFICATE:

CORNER NUMBER 114

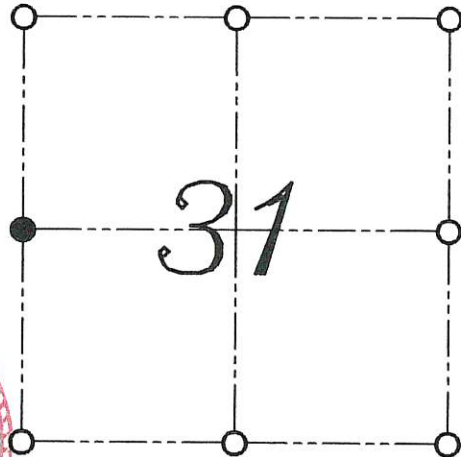
I, LARRY L. AUSTIN, DO HEREBY CERTIFY THAT ON 22nd DAY OF OCTOBER, 1999, I FOUND NO EVIDENCE OF THE WEST 1/4 CORNER OF SECTION 31, TOWN 7 NORTH, RANGE 2 WEST, OF THE FOURTH PRINCIPAL MERIDIAN, AND I RE-ESTABLISHED SAID CORNER ACCORDING TO THE WISCONSIN STATUTES AS SHOWN AND DESCRIBED HEREON.

DATED THIS 1st DAY OF NOVEMBER, 1999

Larry L. Austin
LARRY L. AUSTIN S-1903



SEAL



● = CORNER LOCATION

WEST 1/4 CORNER OF SECTION 31, T 7 N R 2 W TOWN OF HICKORY GROVE

HISTORY OF ORIGINAL CORNER ESTABLISHMENT:

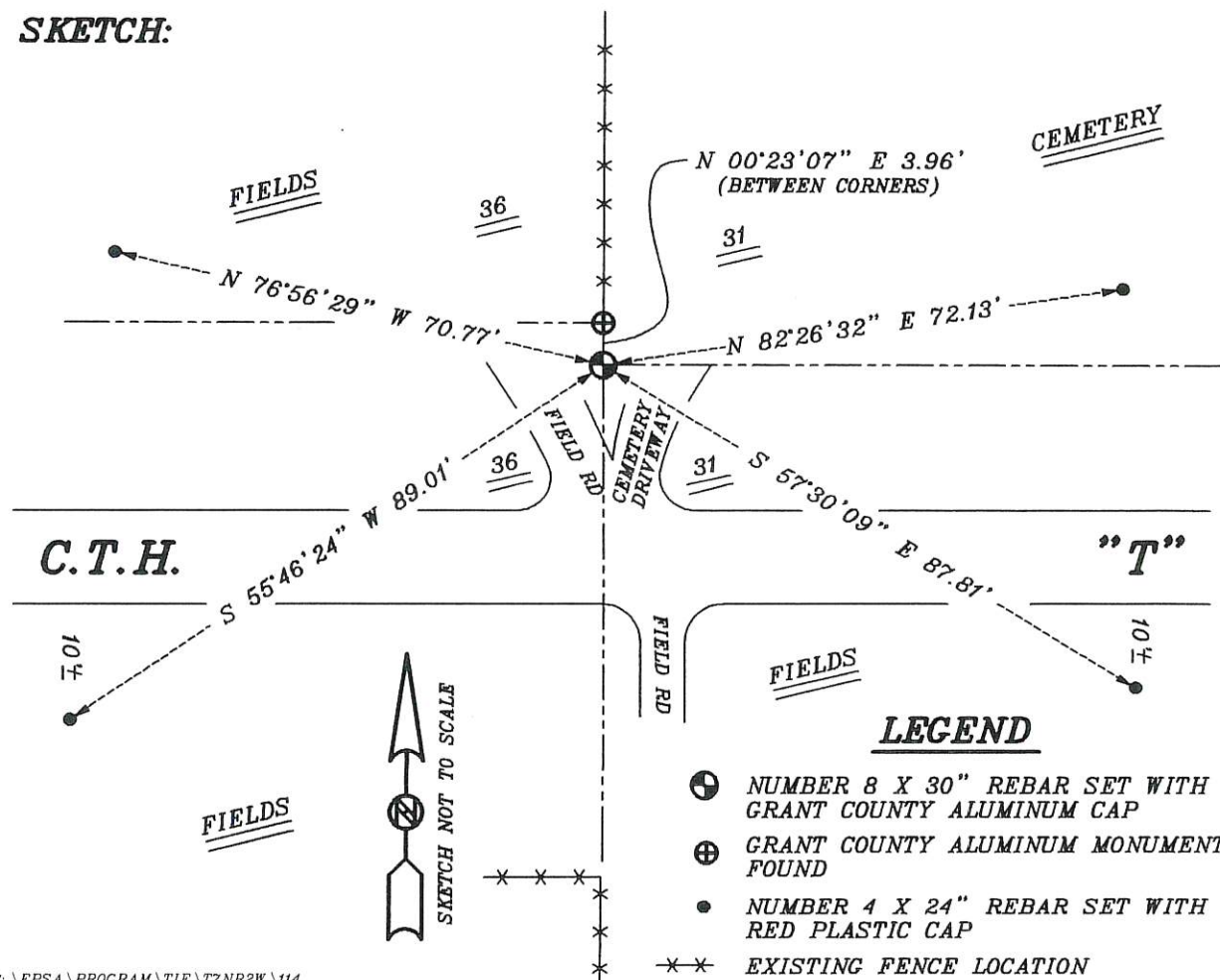
CORNER WAS NEVER ORIGINALLY SET. IN 1850 GEO STUNTZ SET THE CORNER. IN 1997 THOM GRENLIE RESET THE CORNER.

DESCRIPTION OF CORNER EVIDENCE FOUND:

I FOUND NO EVIDENCE OF GRENLIE'S MONUMENT. I RESET THE CORNER BASED ON GRENLIE'S SURVEY. VERIFIED THIS LOCATION USING E.D.M. AND G.P.S. METHODS.

DESCRIPTION OF CORNER AND WITNESS MONUMENTS, REFERENCES AND ACCESSORIES USED TO PERPETUATE THE ORIGINAL OR RE-ESTABLISHED LOCATION OF THIS CORNER:
WITNESS TO THE CORNER LOCATION: BOBBY SEDGWICK ; SHELBY BLINDERT

SKETCH:



LEGEND

- ⊕ NUMBER 8 X 30" REBAR SET WITH GRANT COUNTY ALUMINUM CAP
- ⊕ GRANT COUNTY ALUMINUM MONUMENT FOUND
- NUMBER 4 X 24" REBAR SET WITH RED PLASTIC CAP
- *** EXISTING FENCE LOCATION