

72113 (113)

GRANT COUNTY CERTIFIED LAND CORNER

CERTIFICATE:

I, LARRY L. AUSTIN, DO HEREBY CERTIFY THAT ON 22nd DAY OF OCTOBER, 1999, I FOUND NO EVIDENCE OF THE NORTHWEST CORNER OF SECTION 31, TOWN 7 NORTH, RANGE 2 WEST, OF THE FOURTH PRINCIPAL MERIDIAN, AND I RE-ESTABLISHED SAID CORNER ACCORDING TO THE WISCONSIN STATUTES AS SHOWN AND DESCRIBED HEREON.

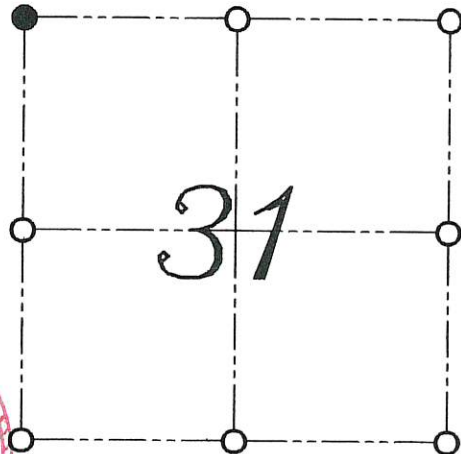
DATED THIS 1st DAY OF NOVEMBER, 1999

Larry L. Austin
LARRY L. AUSTIN S-1903



SEAL

CORNER NUMBER 113



● = CORNER LOCATION

NORTHWEST CORNER OF SECTION 31, T 7 N R 2 W TOWN OF HICKORY GROVE

HISTORY OF ORIGINAL CORNER ESTABLISHMENT:

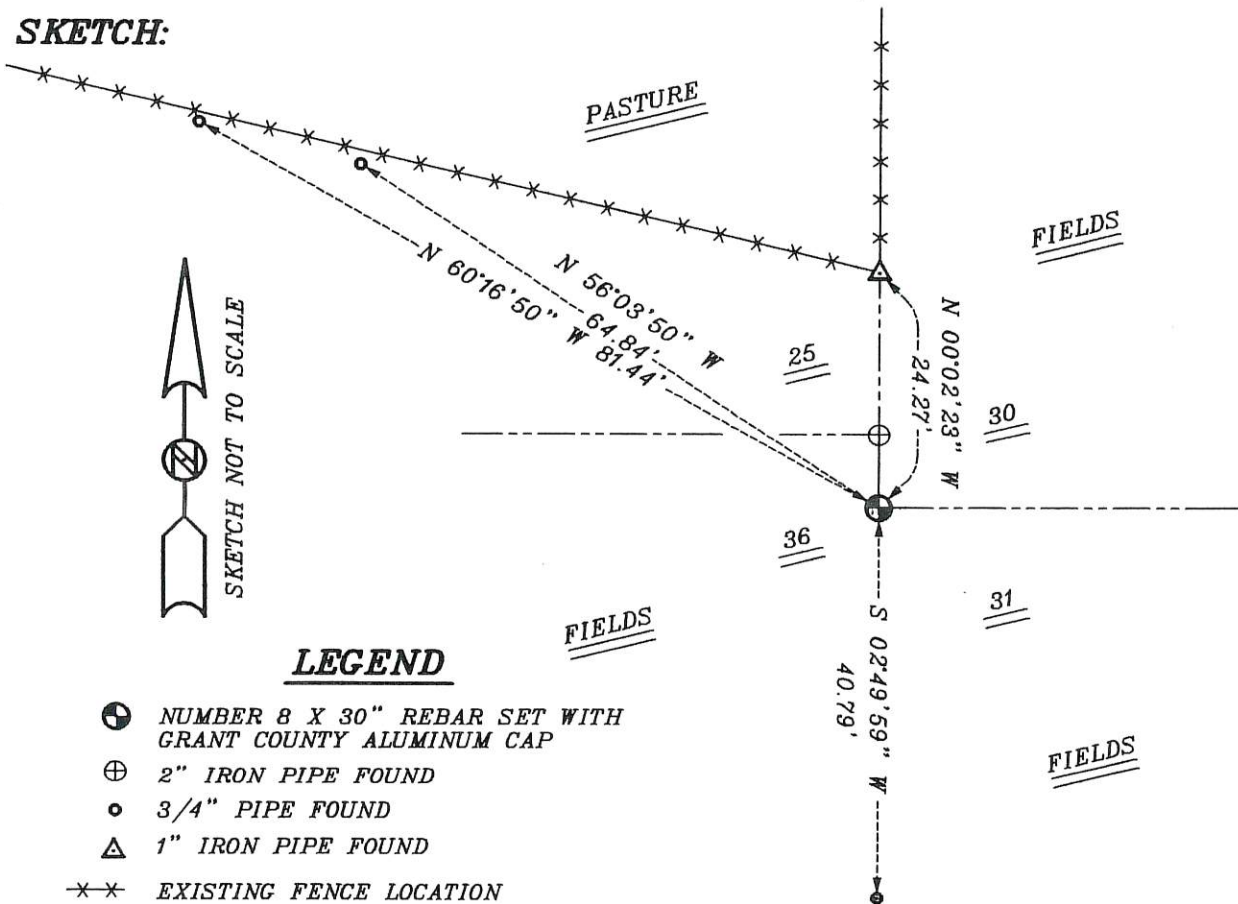
CORNER WAS SET IN 1833 BY HARVEY PARKE.
NO OTHER RECORDS OF THE CORNER WERE FOUND.

DESCRIPTION OF CORNER EVIDENCE FOUND:

I RESET THE CORNER BASED ON THE RECORDED OFFSET FROM THE NORTHEAST CORNER OF SECTION 36. VERIFIED THIS LOCATION USING E.D.M. AND G.P.S. METHODS.

DESCRIPTION OF CORNER AND WITNESS MONUMENTS, REFERENCES AND ACCESSORIES USED TO PERPETUATE THE ORIGINAL OR RE-ESTABLISHED LOCATION OF THIS CORNER:
WITNESS TO THE CORNER LOCATION: BOBBY SEDGWICK ; SHELBY BLINDERT

SKETCH:



LEGEND

- ⊕ NUMBER 8 X 30" REBAR SET WITH GRANT COUNTY ALUMINUM CAP
- ⊕ 2" IRON PIPE FOUND
- 3/4" PIPE FOUND
- △ 1" IRON PIPE FOUND
- *- EXISTING FENCE LOCATION

113