

U.S. PUBLIC LAND SURVEY MONUMENT RECORD - GRANT COUNTY, WI

Section 31, Town 7 North Range 2 West, Town of Hickory Grove (a)

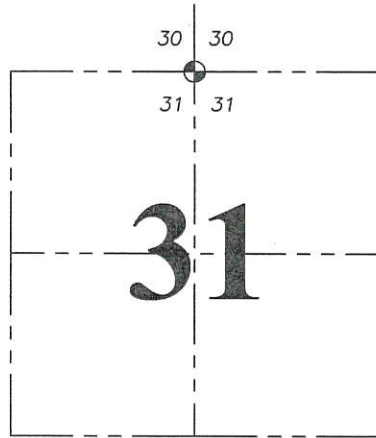
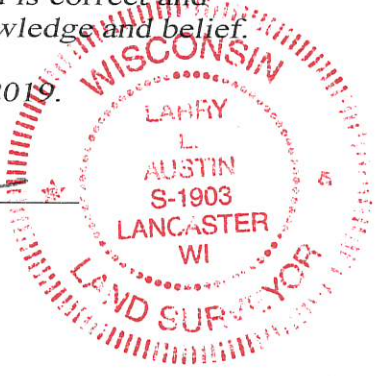
NOTE: This form is intended and designed to fulfill all requirements of the Wisconsin Administrative Code Chapter A-E 7.08, U.S. Public Land Survey Monument Record (3) (a) (b) (c) (d) (e) (f) (g) (h) (i).

CERTIFICATE: (i)

I, Larry L. Austin, Wisconsin Professional Land Surveyor, do hereby certify that the corner location on this record was determined by me and/or under my direct supervision and that this U.S. Public Land Survey Monument Record is correct and complete to the best of my knowledge and belief.

Dated this 12th day of March, 2019.

Larry L. Austin
Larry L. Austin, S-1903



⊙ = CORNER LOCATION

Grant County Coordinates:
NAD 83 (2011)
Northing: 596,058.40
Easting: 833,470.32

HISTORY OF CORNER ESTABLISHMENT:

Original corner was set in 1833 by Harvey Parke.
Thom R. Grenlie set a 1" bar on a plat dated 10-8-1997, filed in Book 1, Page 6.
I found the 1" bar set by Grenlie and prepared a tie sheet 11-1-1999.

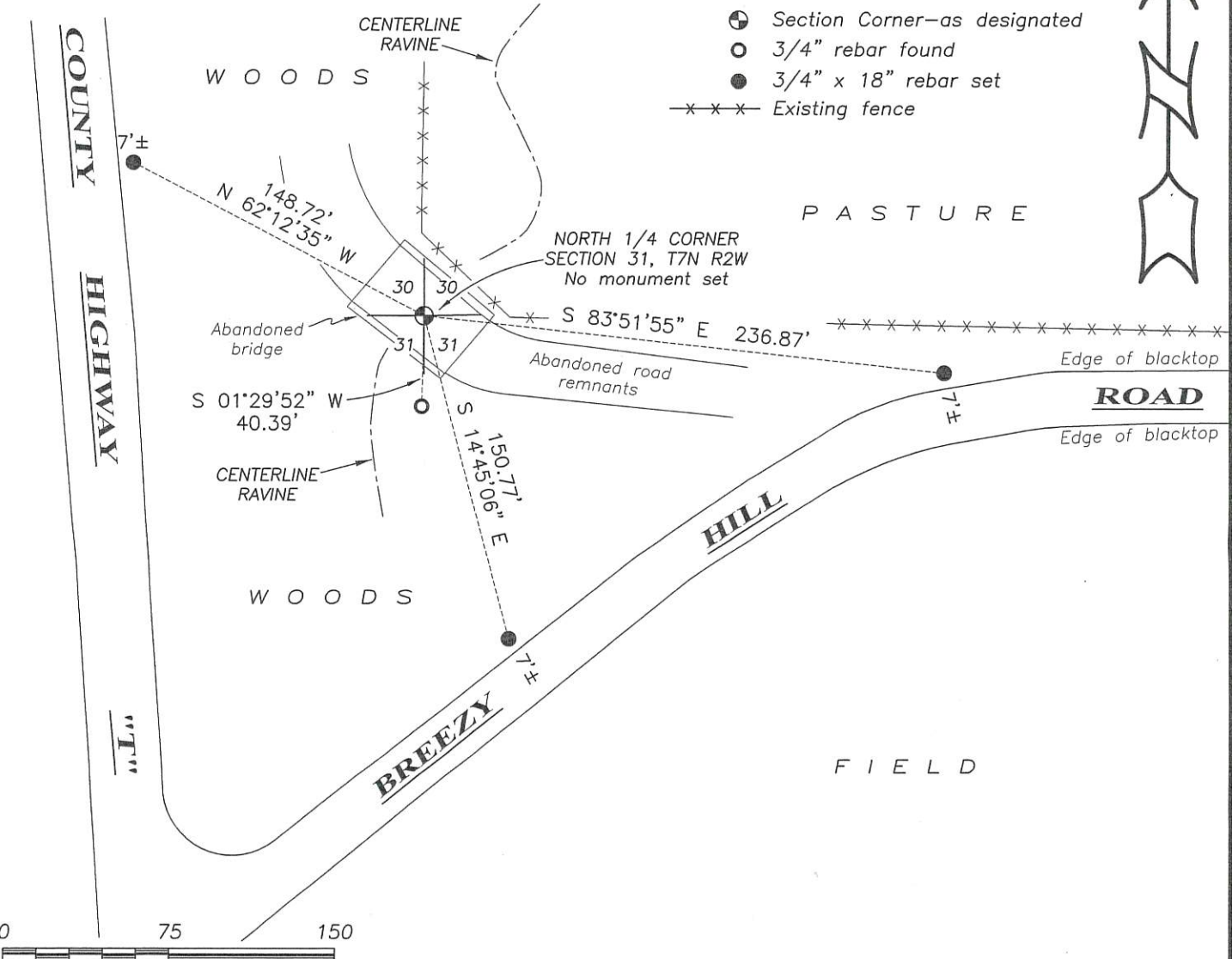
DESCRIPTION OF CORNER EVIDENCE FOUND: (b) (f) (g) (h)

I could not recover the 1" rebar. The abandoned bridge is dilapidated, therefore I can not reset a monument at the corner. I restored it's location using one found tie and ties to a Survey I did filed in Book 20, Page 57. I set three additional ties after I verified it's location with G.P.S. and E.D.M. methods.

DESCRIPTION OF CORNER AND WITNESS MONUMENTS. references and accessories used to perpetuate the original or re-established location of this corner. (c) (d) (e)

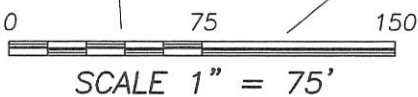
Witnesses to corner location Shane Austin, Owen Austin.

SKETCH:



LEGEND

- ⊙ Section Corner—as designated
- 3/4" rebar found
- 3/4" x 18" rebar set
- x-x-x- Existing fence



SCALE 1" = 75'

GRANT COUNTY CERTIFIED LAND CORNER

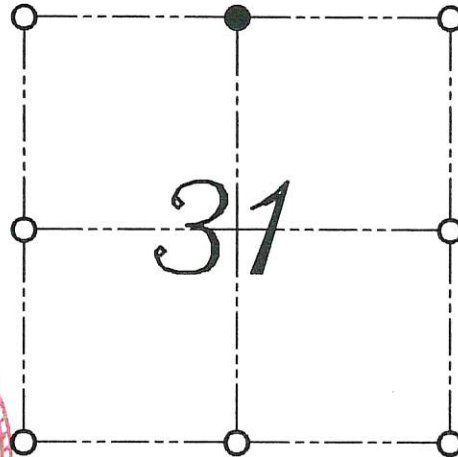
CERTIFICATE:

I, LARRY L. AUSTIN, DO HEREBY CERTIFY THAT ON 22nd DAY OF OCTOBER, 1999, I FOUND EVIDENCE OF THE NORTH 1/4 CORNER OF SECTION 31, TOWN 7 NORTH, RANGE 2 WEST, OF THE FOURTH PRINCIPAL MERIDIAN, AND I RE-ESTABLISHED SAID CORNER ACCORDING TO THE WISCONSIN STATUTES AS SHOWN AND DESCRIBED HEREON.

DATED THIS 1st DAY OF NOVEMBER, 1999

Larry L. Austin
LARRY L. AUSTIN S-1903

CORNER NUMBER 112



● = CORNER LOCATION

NORTH 1/4 CORNER OF SECTION 31, T 7 N R 2 W TOWN OF HICKORY GROVE



SEAL

HISTORY OF ORIGINAL CORNER ESTABLISHMENT:

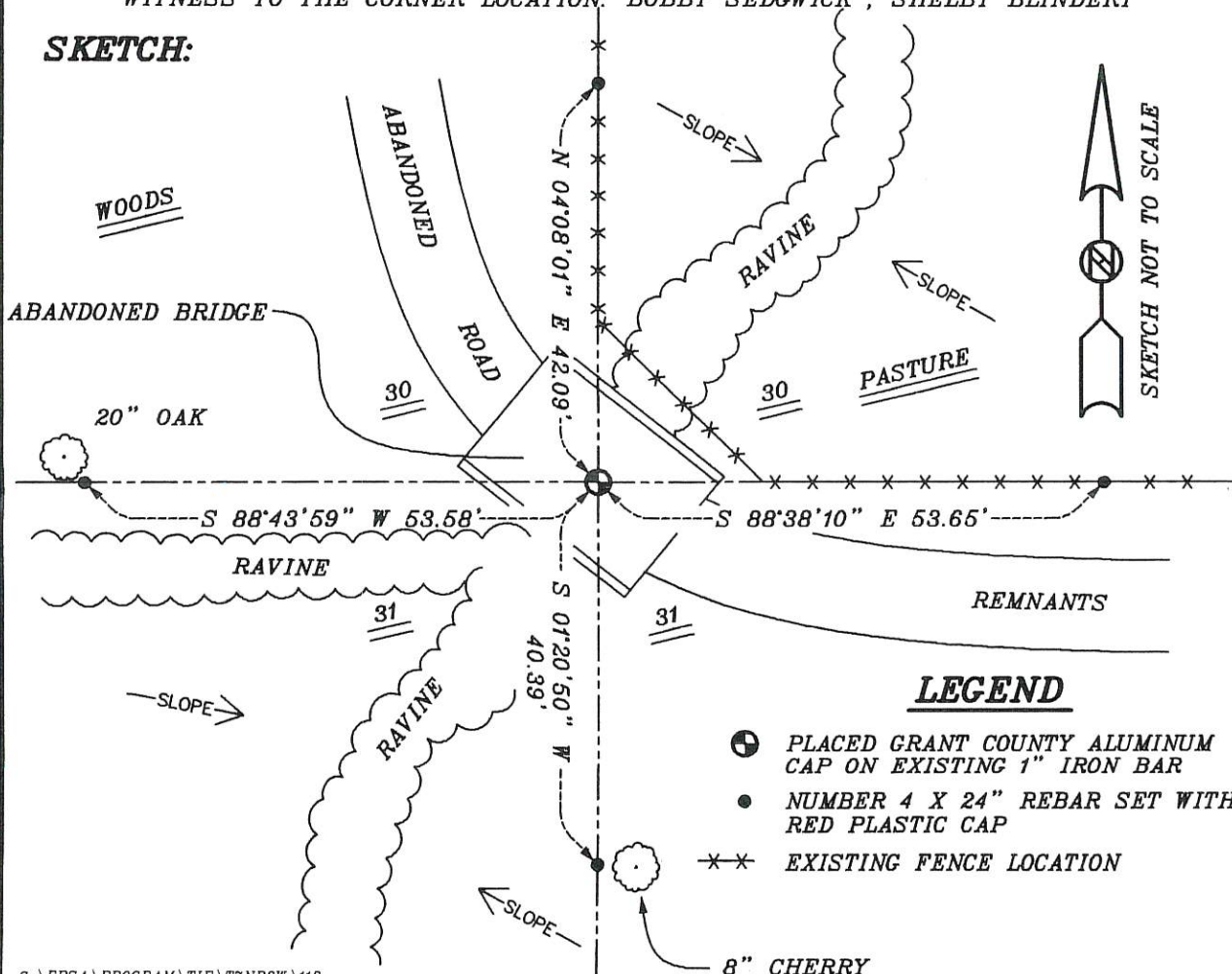
CORNER WAS SET IN 1833 BY HARVEY PARKE.
IN 1997 THOM R. GRENLIE SET A 1" IRON BAR.

DESCRIPTION OF CORNER EVIDENCE FOUND:

I FOUND THE 1" IRON BAR AND ACCEPTED IT'S LOCATION AFTER AN E.D.M. AND G.P.S. TRAVERSE OF THE AREA.

DESCRIPTION OF CORNER AND WITNESS MONUMENTS, REFERENCES AND ACCESSORIES USED TO PERPETUATE THE ORIGINAL OR RE-ESTABLISHED LOCATION OF THIS CORNER:
WITNESS TO THE CORNER LOCATION: BOBBY SEDGWICK ; SHELBY BLINDERT

SKETCH:



LEGEND

- ⊕ PLACED GRANT COUNTY ALUMINUM CAP ON EXISTING 1" IRON BAR
- NUMBER 4 X 24" REBAR SET WITH RED PLASTIC CAP
- ×× EXISTING FENCE LOCATION