

U.S. PUBLIC LAND SURVEY MONUMENT RECORD - GRANT COUNTY, WI

Section 29, Town 7 North Range 2 West, Town of Hickory Grove (a)

NOTE: This form is intended and designed to fulfill all requirements of the Wisconsin Administrative Code Chapter A-E 7.08, U.S. Public Land Survey Monument Record (3) (a) (b) (c) (d) (e) (f) (g) (h) (i).

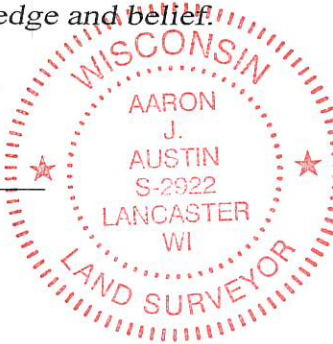
CERTIFICATE: (i)

I, Aaron J. Austin, Wisconsin Professional Land Surveyor, do hereby certify that the corner location on this record was determined by me and/or under my direct supervision and that this U.S. Public Land Survey Monument Record is correct and complete to the best of my knowledge and belief.

Dated this 26th day of June, 2019.

Aaron J. Austin
Aaron J. Austin, S-2922

Grant County Coordinates:
NAD 83 (2011)
Northing: 595,979.15
Easting: 841,451.15



HISTORY OF CORNER ESTABLISHMENT:

Original corner was set in 1832 by Sibley.
Laurence Schmit shown a 3/4" rebar at the corner on a Plat of Survey dated 5-26-1994.
Larry Austin did not accept the 3/4" rebar and set a 1" rebar with a Grant County cap and prepared a Survey Monument Record 2-3-2000.

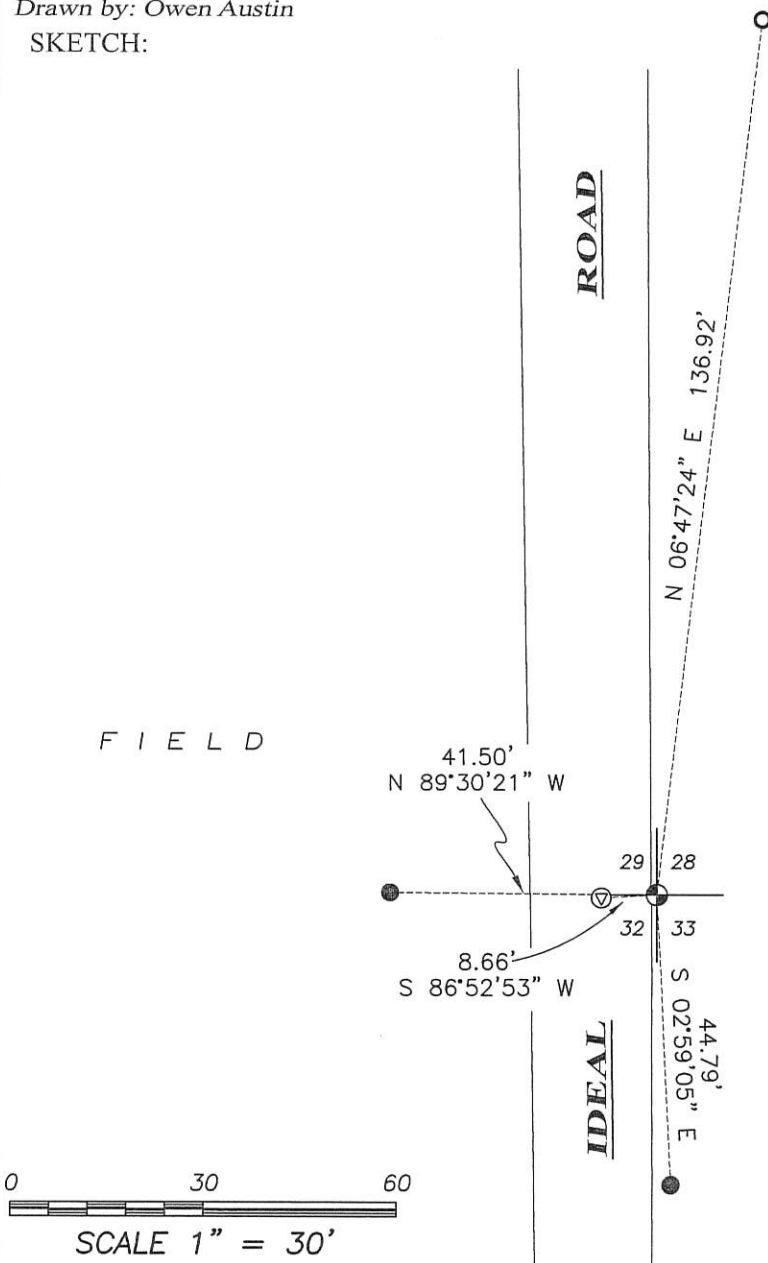
DESCRIPTION OF CORNER EVIDENCE FOUND: (b) (f) (g) (h)

I found and accepted the monument and one witness corner as set by Larry Austin. I established three additional witness corners after I verified the Monument's location with G.P.S. and E.D.M. methods.

DESCRIPTION OF CORNER AND WITNESS MONUMENTS, references and accessories used to perpetuate the original or re-established location of this corner. (c) (d) (e)

Witnesses to corner location Shane Austin, Owen Austin.
Drawn by: Owen Austin

SKETCH:

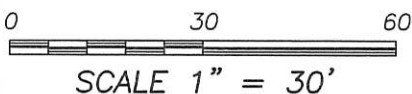


LEGEND

- ⊕ Section Corner—as designated
- 1/2" rebar found
- ⊖ Railroad spike found (unknown origin)
- 3/4" x 18" rebar set



SOUTHEAST CORNER
SECTION 29, T7N R2W
Aluminum capped rebar
found and new tie sheet



GRANT COUNTY CERTIFIED LAND CORNER

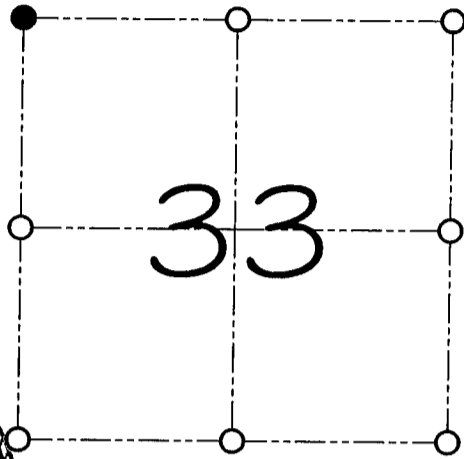
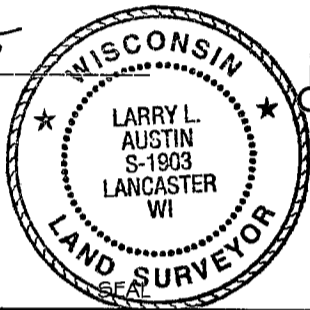
CORNER NUMBER 109

CERTIFICATE:

I, Larry L. Austin, do hereby certify that on the 14th day of January, 2000, I found evidence of the Northwest corner of Section 33, Town 7 North, Range 2 West, of the 4th Principal Meridian, and I re-established said corner according to the Wisconsin statutes as shown and described hereon.

Dated this 3rd day of February, 2000

Larry L. Austin
Larry L. Austin S-1903



● = CORNER LOCATION

**NORTHWEST CORNER OF
SECTION 33, T 7 N R 2 W
TOWN OF HICKORY GROVE**

HISTORY OF ORIGINAL CORNER ESTABLISHMENT:

Corner was originally set in 1832 by Sibley. Larry Schmit found a 3/4" iron rod in 1994 and accepted it as the corner.

DESCRIPTION OF CORNER EVIDENCE FOUND:

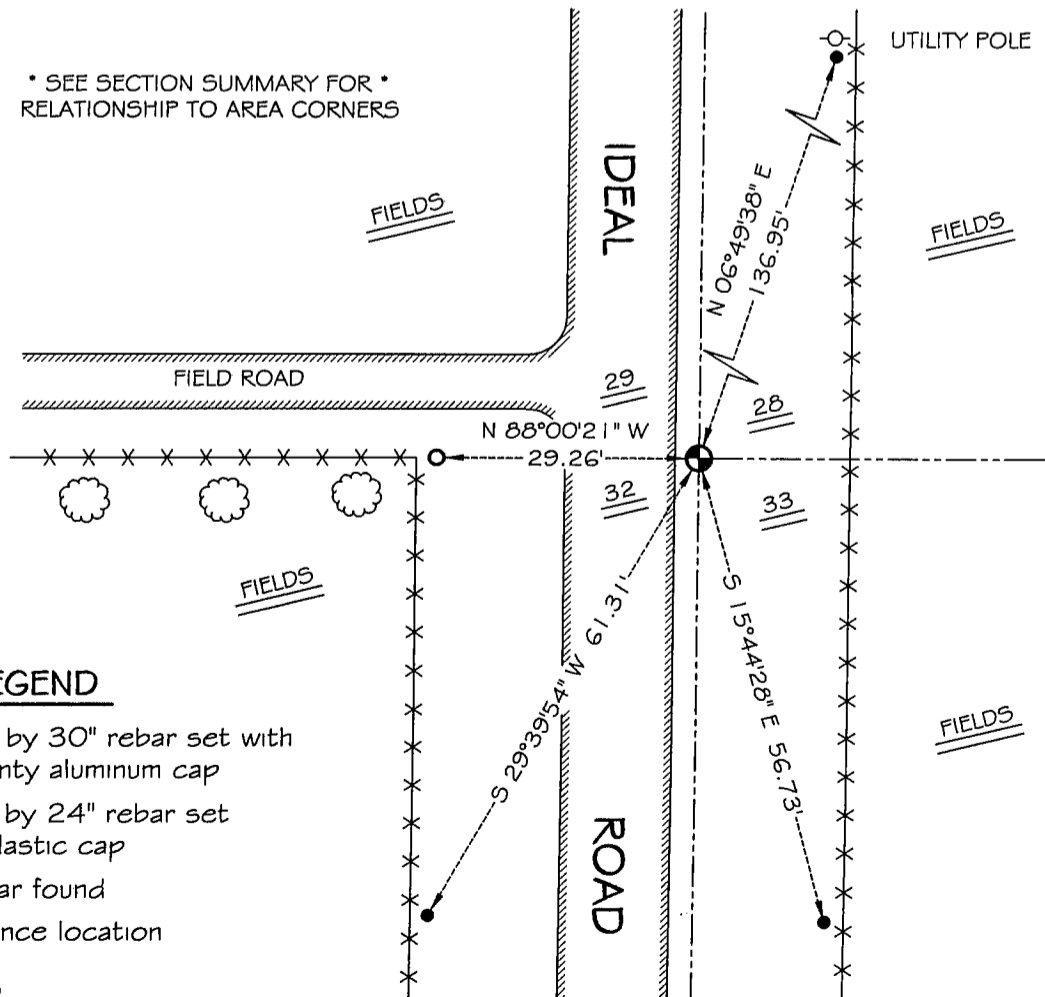
I found the 3/4" iron bar and did not accept it's location. I re-established the corner location based on proportioning between the occupied North 1/4 of Section 32 and the monumented North 1/4 of Section 33. I held the 3/4" iron bar and fence West for Northing. Verified this location using E.D.M. and G.P.S. methods.

DESCRIPTION OF CORNER AND WITNESS MONUMENTS, references and accessories used to perpetuate the original or re-established location of this corner

WITNESS TO THE CORNER LOCATION: SHELBY BLINDERT & BRIAN WINKERS

SKETCH:

* SEE SECTION SUMMARY FOR *
RELATIONSHIP TO AREA CORNERS



LEGEND

- Number 8 by 30" rebar set with Grant County aluminum cap
- Number 4 by 24" rebar set with red plastic cap
- No. 6 rebar found
- ×× Existing fence location