

U.S. PUBLIC LAND SURVEY MONUMENT RECORD - GRANT COUNTY, WI

Section 30, Town 7 North Range 2 West, Town of Hickory Grove (a)

NOTE: This form is intended and designed to fulfill all requirements of the Wisconsin Administrative Code Chapter A-E 7.08, U.S. Public Land Survey Monument Record (3) (a) (b) (c) (d) (e) (f) (g) (h) (i).

CERTIFICATE: (i)

I, Aaron J. Austin, Wisconsin Professional Land Surveyor, do hereby certify that the corner location on this record was determined by me and/or under my direct supervision and that this U.S. Public Land Survey Monument Record is correct and complete to the best of my knowledge and belief.

Dated this 17th day of June, 2020.

Revised this 8th day of July, 2024. AJA

Aaron J. Austin
Aaron J. Austin, S-2922



⊙ = CORNER LOCATION

Grant County Coordinates:
NAD 83 (2011)
Northing: 598,700.50
Easting: 830,817.27

HISTORY OF CORNER ESTABLISHMENT:

Original corner was not set with original Government Survey.
Larry Austin set a 1" rebar with a Grant County Aluminum Cap and prepared a Survey Monument Record dated 11/25/2000.

DESCRIPTION OF CORNER EVIDENCE FOUND: (b) (f) (g) (h)

The Monument set by Larry Austin was found disturbed. I set a 7/8" rebar based upon the prorated offset of the East 1/4 corner and Southeast corner of Section 25. I established four witness corners after I verified the Monument's location with G.P.S. and E.D.M. methods.

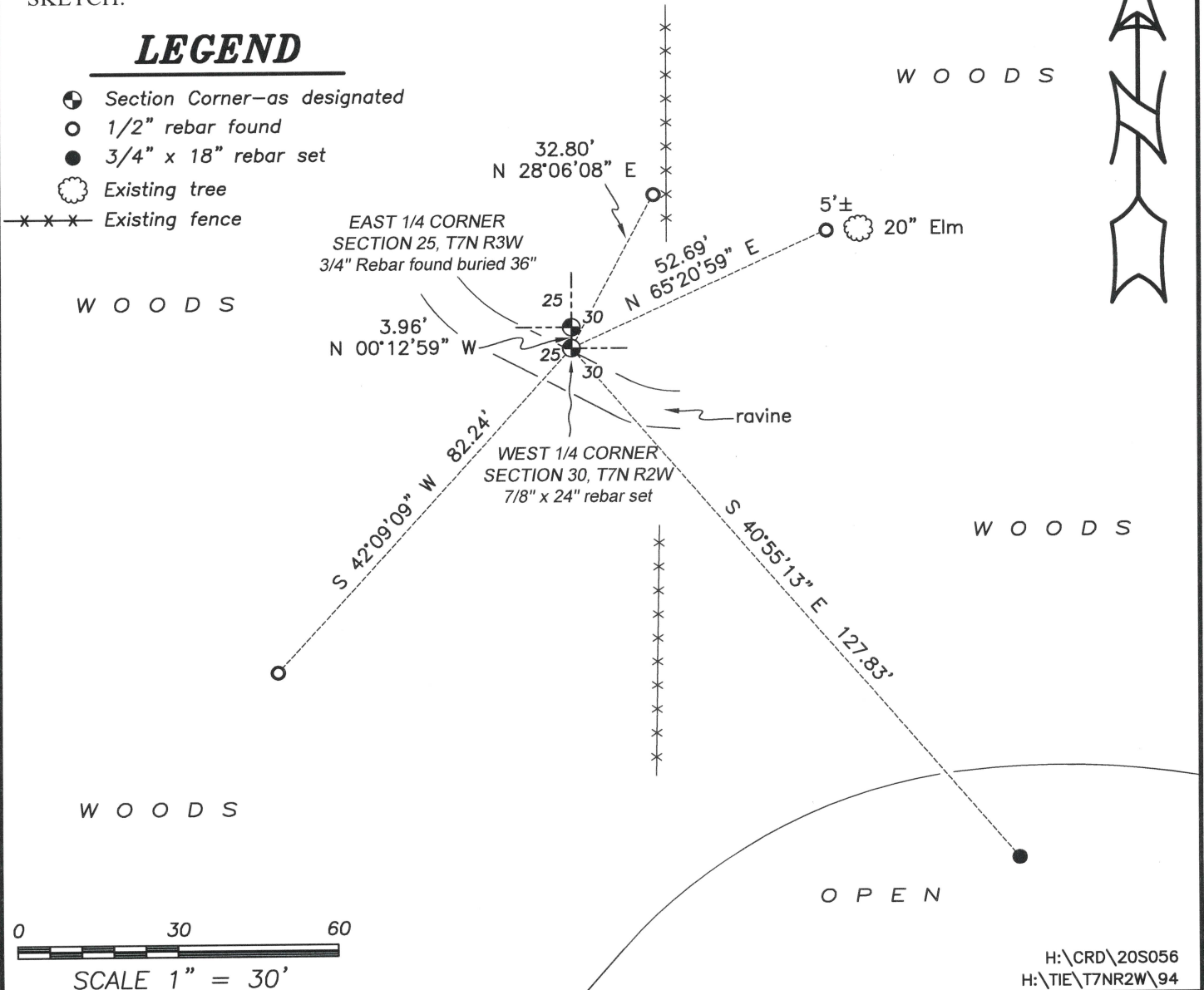
DESCRIPTION OF CORNER AND WITNESS MONUMENTS, references and accessories used to perpetuate the original or re-established location of this corner. (c) (d) (e)

Witnesses to corner location Shane Austin, Owen Austin.
Drawn by Owen Austin

SKETCH:

LEGEND

- ⊙ Section Corner—as designated
- 1/2" rebar found
- 3/4" x 18" rebar set
- ⊙ Existing tree
- x-x-x- Existing fence



U.S. PUBLIC LAND SURVEY MONUMENT RECORD - GRANT COUNTY, WI

Section 30, Town 7 North Range 2 West, Town of Hickory Grove (a)

NOTE: This form is intended and designed to fulfill all requirements of the Wisconsin Administrative Code Chapter A-E 7.08, U.S. Public Land Survey Monument Record (3) (a) (b) (c) (d) (e) (f) (g) (h) (i).

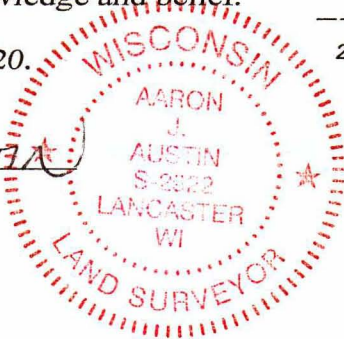
CERTIFICATE: (i)

I, Aaron J. Austin, Wisconsin Professional Land Surveyor, do hereby certify that the corner location on this record was determined by me and/or under my direct supervision and that this U.S. Public Land Survey Monument Record is correct and complete to the best of my knowledge and belief.

Dated this 17th day of June, 2020.

Aaron J. Austin (handwritten signature)

Aaron J. Austin, S-2922



⊕ = CORNER LOCATION

Grant County Coordinates: NAD 83 (2011) Northing: 598,704.46 Easting: 830,817.25

HISTORY OF CORNER ESTABLISHMENT:

Original corner was not set with original Government Survey. Larry Austin set a 1" rebar with a Grant County Aluminum Cap and prepared a Survey Monument Record dated 11/25/2000.

DESCRIPTION OF CORNER EVIDENCE FOUND: (b) (f) (g) (h)

The Monument set by Larry Austin was found disturbed. I set a 7/8" rebar based upon the prorated offset of the East 1/4 corner and Southeast corner of Section 25. I established four witness corners after I verified the Monument's location with G.P.S. and E.D.M. methods.

DESCRIPTION OF CORNER AND WITNESS MONUMENTS, references and accessories used to perpetuate the original or re-established location of this corner. (c) (d) (e)

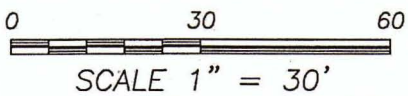
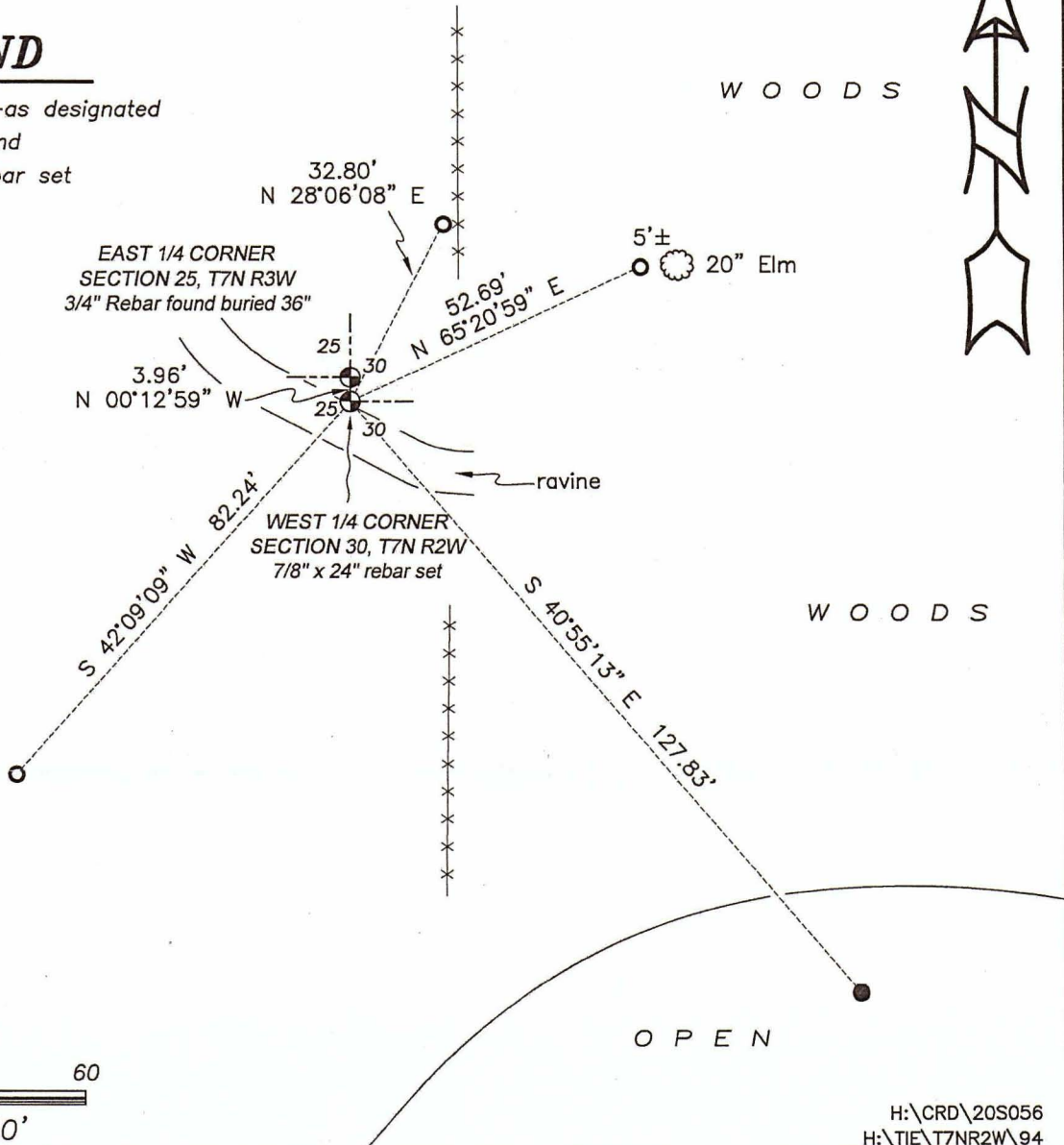
Witnesses to corner location Shane Austin, Owen Austin.

Drawn by Owen Austin

SKETCH:

LEGEND

- ⊕ Section Corner-as designated
○ 1/2" rebar found
● 3/4" x 18" rebar set
Existing tree
Existing fence



GRANT COUNTY CERTIFIED LAND CORNER

CORNER NUMBER 94

CERTIFICATE:

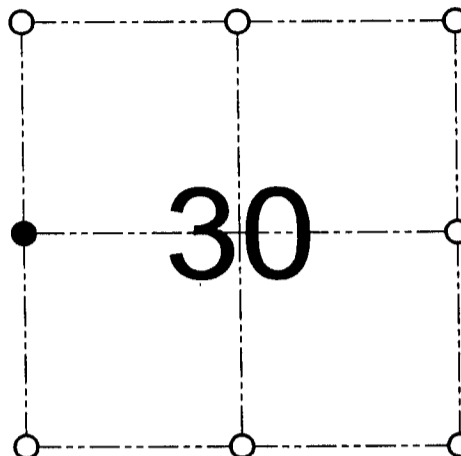
I, Larry L. Austin, do hereby certify that on the th day of , 2000, I found no evidence of the West 1/4 corner of Section 30, Town 7 North, Range 2 West, of the 4th Principal Meridian, and I re-established said corner according to the Wisconsin statutes as shown and described hereon.

Dated this 25th day of November, 2000

Larry L. Austin
Larry L. Austin S-1903



SEAL



● = CORNER LOCATION

WEST 1/4 CORNER OF
SECTION 30, T 7 N R 2 W
TOWN OF HICKORY GROVE

HISTORY OF ORIGINAL CORNER ESTABLISHMENT:

Corner was never originally set.

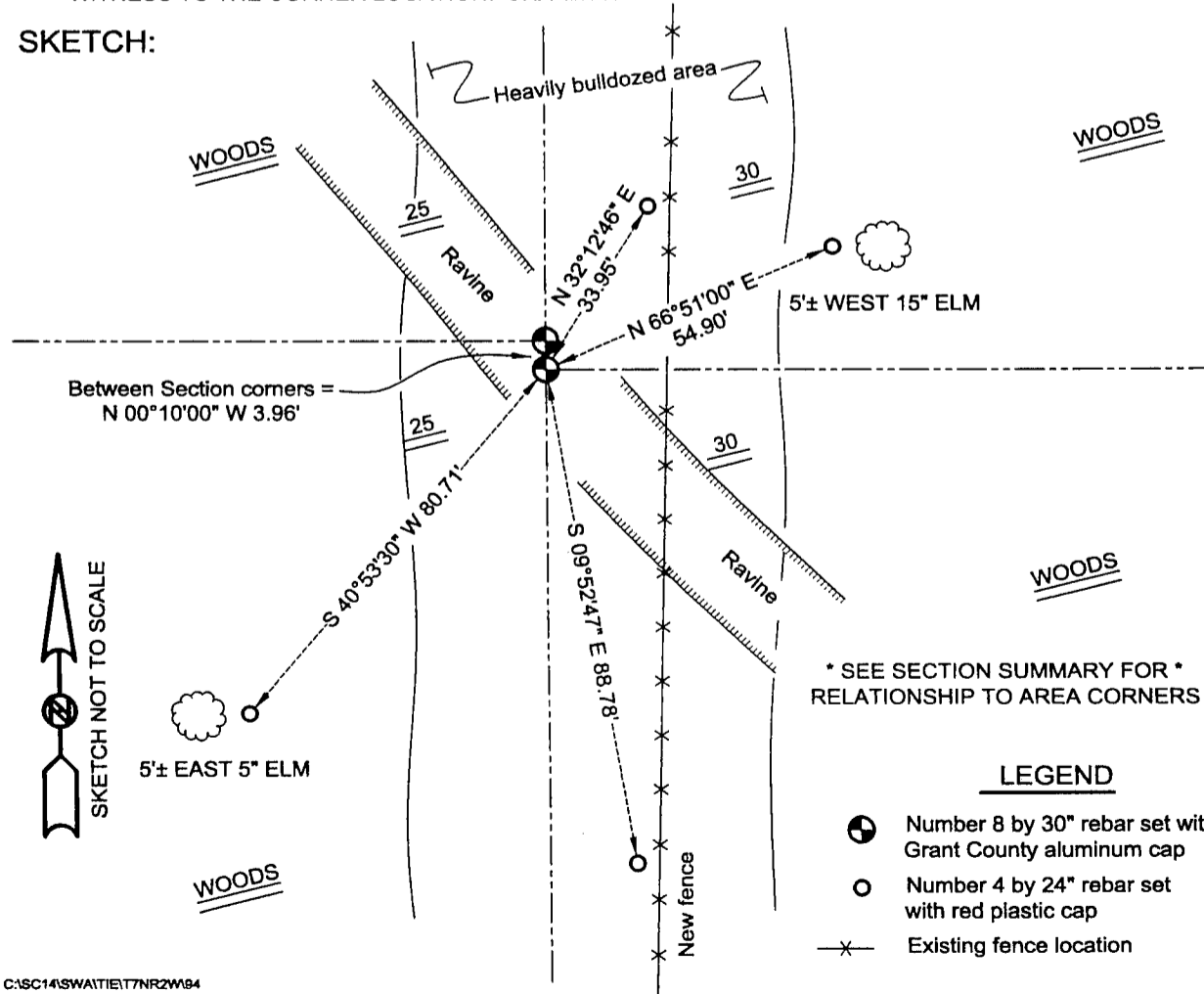
DESCRIPTION OF CORNER EVIDENCE FOUND:

I set the corner based on the proportioned offset from the East 1/4 of Section 25. Verified this location using EDM & GPS methods.

DESCRIPTION OF CORNER AND WITNESS MONUMENTS, references and accessories used to perpetuate the original or re-established location of this corner

WITNESS TO THE CORNER LOCATION: SHANE AUSTIN & SHELBY BLINDERT & BOBBY SEDGWICK

SKETCH:



* SEE SECTION SUMMARY FOR *
RELATIONSHIP TO AREA CORNERS

LEGEND

- Number 8 by 30" rebar set with Grant County aluminum cap
- Number 4 by 24" rebar set with red plastic cap
- x— Existing fence location