

U.S. PUBLIC LAND SURVEY MONUMENT RECORD - GRANT COUNTY, WI

Section 19, Town 7 North Range 2 West, Town of Hickory Grove (a)

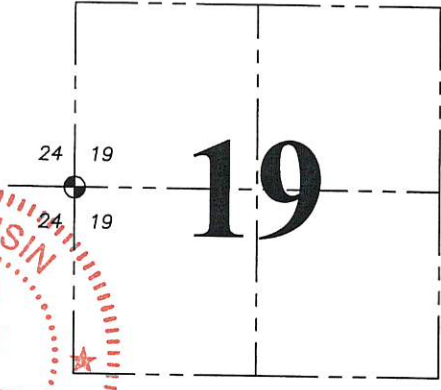
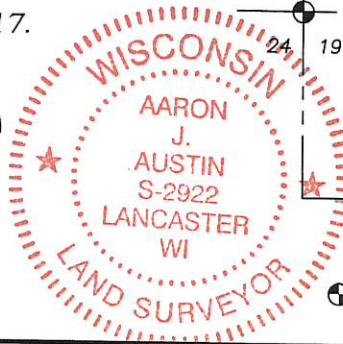
NOTE: This form is intended and designed to fulfill all requirements of the Wisconsin Administrative Code Chapter A-E 7.08, U.S. Public Land Survey Monument Record (3) (a) (b) (c) (d) (e) (f) (g) (h) (i).

CERTIFICATE: (i)

I, Aaron J. Austin, Wisconsin Professional Land Surveyor, do hereby certify that the corner location on this record was determined by me and/or under my direct supervision and that this U.S. Public Land Survey Monument Record is correct and complete to the best of my knowledge and belief.

Dated this 16th day of November, 2017.

Aaron J. Austin
Aaron J. Austin, S-2922



● = CORNER LOCATION

HISTORY OF CORNER ESTABLISHMENT:

Original corner was set by Lucius Lyon in 1832.
Matthew Janiak reset the corner and prepared a Survey Monument Record dated 5-16-1990.

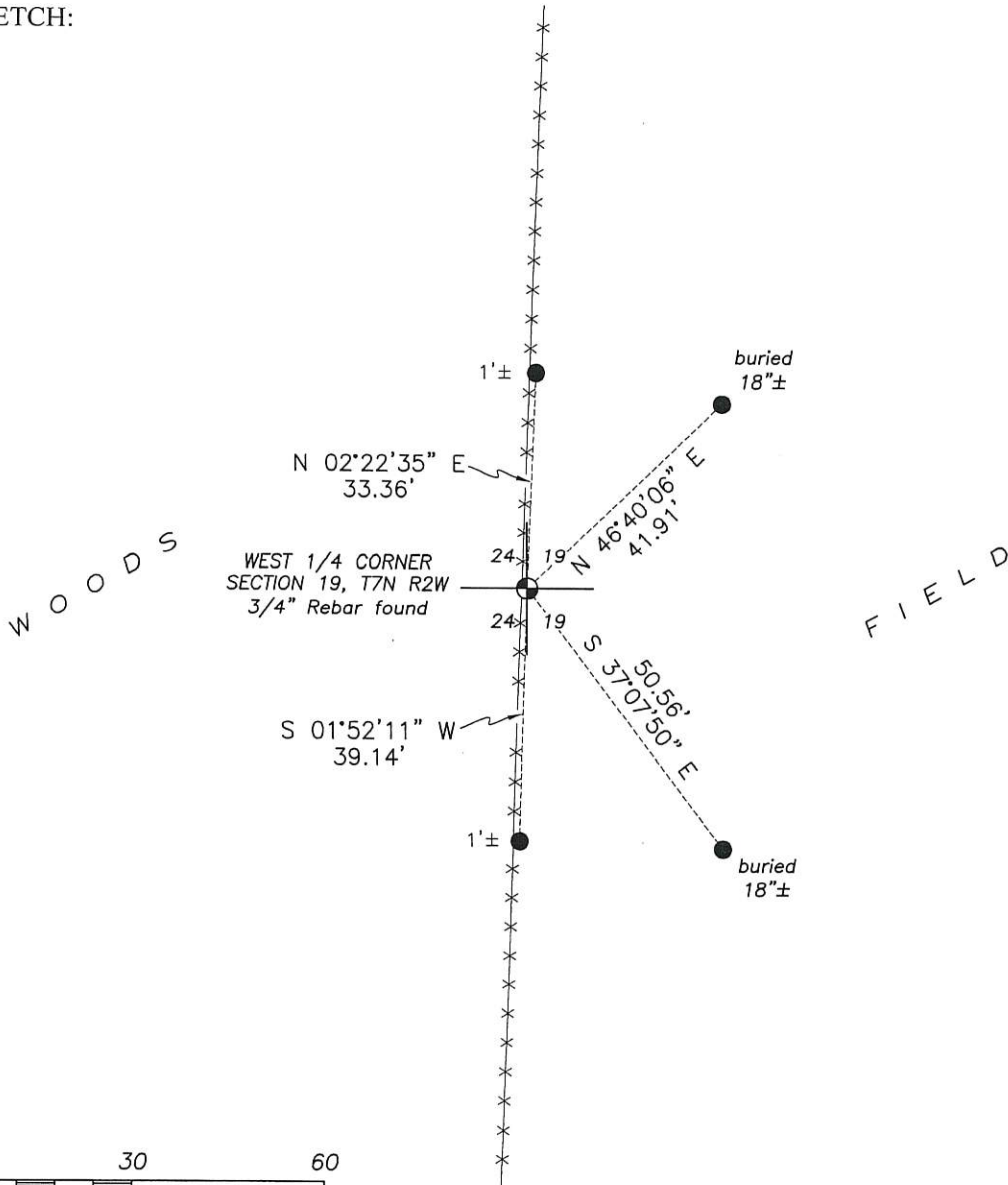
DESCRIPTION OF CORNER EVIDENCE FOUND: (b) (f) (g) (h)

I found the 3/4" rebar as established by Matthew Janiak. I set four new witness corners after I verified the corner's location with G.P.S. and E.D.M. methods

DESCRIPTION OF CORNER AND WITNESS MONUMENTS, references and accessories used to perpetuate the original or re-established location of this corner. (c) (d) (e)

Witnesses to corner location Shane Austin.

SKETCH:



SCALE 1" = 30'

MAY 25 1990

GRANT COUNTY

GOVERNMENT CORNER RECORD

WEST 1/4 CORNER, SECTION 19, TOWNSHIP 7 NORTH, RANGE 2 EAST - WEST,
TOWN, CITY OR VILLAGE OF HICKORY GROVE, RICHLAND CO.

TYPE OF MONUMENT: 3/4" IRON ROD SET ELEVATION - M.S.L. DATUM

STATE PLANE COORDINATES: N

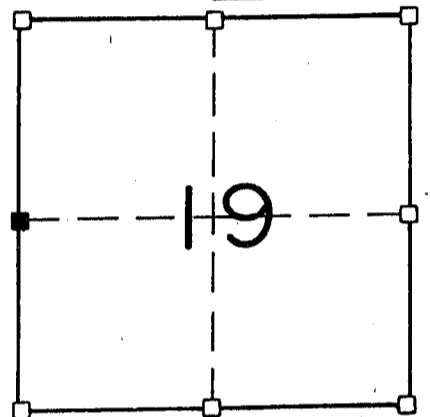
WISCONSIN SOUTH ZONE E

WITNESSES TO CORNER LOCATION

SEAN M. WALSH

PATRICK J. DEDERICH

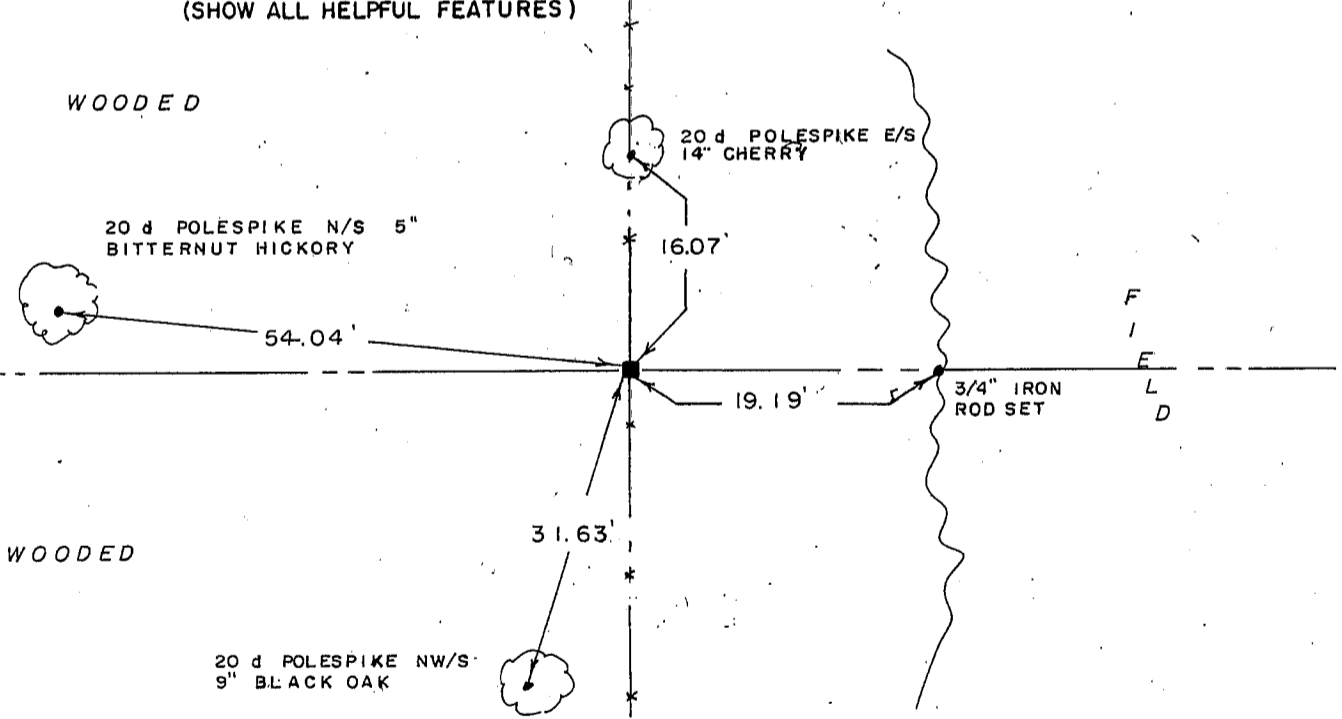
SECTION 19, T 7 N, R 2 E W
TOWN OF HICKORY GROVE



■ - CORNER LOCATION

NORTH

TIE SKETCH
(SHOW ALL HELPFUL FEATURES)



SURVEYOR'S CERTIFICATE
STATE OF WISCONSIN)
RICHLAND COUNTY)SS

SEAL S-1454

I, Matthew J. Janiak, DO HEREBY CERTIFY THAT the above corner
been established under my direction and supervision and that
the information contained hereon is true and correct to
the best of my information, knowledge and belief. the
location of this corner was established by single proportionate
measure between the Northwest and Southwest corners of



DATED THIS 16TH DAY OF May, 19 90

REGISTERED LAND SURVEYOR

CORNER CODE

