

U.S. PUBLIC LAND SURVEY MONUMENT RECORD - GRANT COUNTY, WI

Section 19, Town 7 North Range 2 West, Town of Hickory Grove (a)

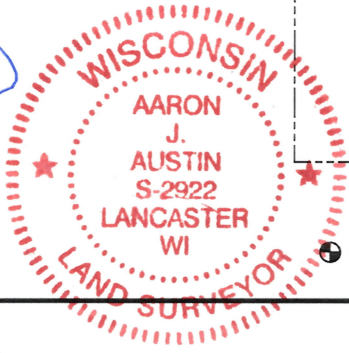
NOTE: This form is intended and designed to fulfill all requirements of the Wisconsin Administrative Code Chapter A-E 7.08, U.S. Public Land Survey Monument Record (3) (a) (b) (c) (d) (e) (f) (g) (h) (i).

CERTIFICATE: (i)

I, Aaron J. Austin, Wisconsin Professional Land Surveyor, do hereby certify that the corner location on this record was determined by me and/or under my direct supervision and that this U.S. Public Land Survey Monument Record is correct and complete to the best of my knowledge and belief.

Dated this 1st day of April, 2025.

Aaron J. Austin
Aaron J. Austin, PLS-2922



Grant County Coordinates:
NAD 83 (2011)
Northing: 606,645.89
Easting: 830,811.38

⊕ = CORNER LOCATION

HISTORY OF CORNER ESTABLISHMENT:

Original corner was set in 1832 by Sibley.
David Davis mentions a 3/4" Rebar on a survey filed in Book G, Page 194 dated 8-6-1979.
Matthew Janiak found a 3/4" Rebar and prepared a Survey Monument Record dated 5-16-1990.

DESCRIPTION OF CORNER EVIDENCE FOUND: (b) (f) (g) (h)

I found a 3/4" Rebar and one witness corner. I established four more witness corners after I verified the Monument's location with G.P.S. and E.D.M. methods.

DESCRIPTION OF CORNER AND WITNESS MONUMENTS, references and accessories used to perpetuate the original or re-established location of this corner. (c) (d) (e)

Witnesses to corner location Shane Austin, Owen Austin, Tanner Austin.
Drawn by: Owen Austin.

SKETCH:

LEGEND

- ⊕ Section Corner—as designated
- 5/8" rebar found
- 3/4" x 18" rebar set
- ☼ Existing tree
- ~~~~~ Edge of field
- () Recorded as

