

U.S. PUBLIC LAND SURVEY MONUMENT RECORD

(As Required By s. A-E 7.08, WI Adm. Code)

History of original corner establishment and subsequent restorations and description of any record, monument, occupational, testimonial or other evidence considered:

HISTORY IS ORIG. GOVT SURVEY & SHOWN ON PLAT OF SURVEY FOR DAN CARNS AND DATED 11-18-90. THE MONUMENT IS GONE. RETRACED CORNER LOCATION FROM TIES TO E 1/4 & SE CORNER OF 14-7-2W TO A POINT IN THE CENTERLINE OF TWP. ROAD AT FENCELINE NORTH

Corner was: (Check All That Apply)

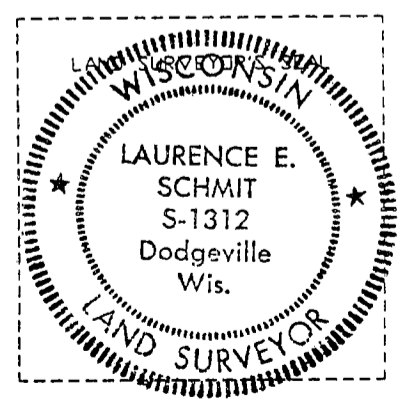
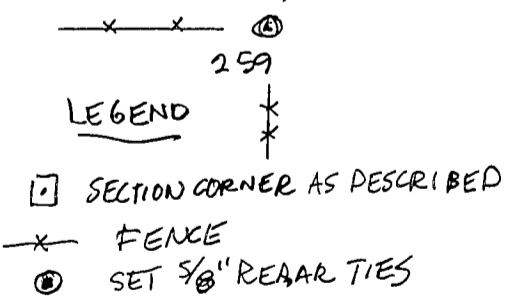
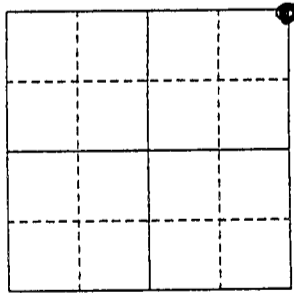
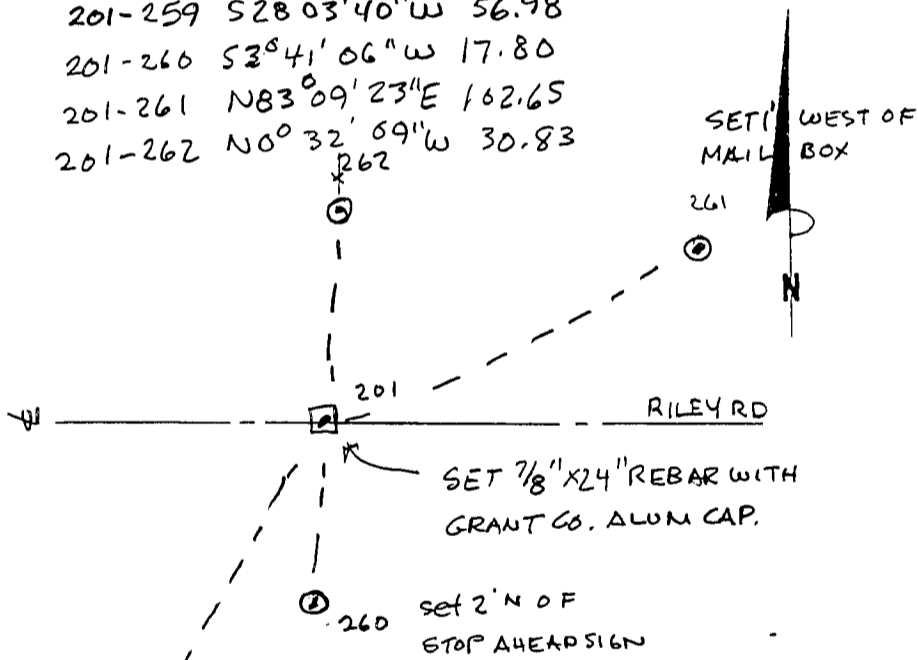
- Restored through acceptance of an obliterated evidence location
- Restored through acceptance of a found perpetuated location
- Considered a lost corner and reestablished through lost corner proportionate methods (include a plan view drawing showing distances and directions to other Public Land Survey Corners used for proportioning and determining the corner location)
- Restored or reestablished in a location that differs from a previous restoration or reestablishment (include a plan view drawing and indicate what was set and/or found)

Describe the monument and accessories used to perpetuate the location of this corner. (Include a plan view drawing and indicate what was set and/or found)

SET 7/8" X 24" REBAR WITH GRANT COUNTY 3 1/4" ALUM. CAP

201-259 S28°03'40"W 56.98
 201-260 S3°41'06"W 17.80
 201-261 N83°09'23"E 162.65
 201-262 N0°32'59"W 30.83

The NE
 corner of Section 19
 T. 7 N., R. 2W
GRANT County, Wisconsin
 Job ID: 995-252
 Book # _____



● = Location of Corner

I, LAURENCE E. SCHMIT
 (Type or print name) certify that the corner location shown on this record was determined by me or under my direction and control and that this U.S. Public Land Survey Monument Record is correct and complete to the best of my knowledge and belief.

Laurence E. Schmit 2-29-2000
 Signature Date

Index No. 71