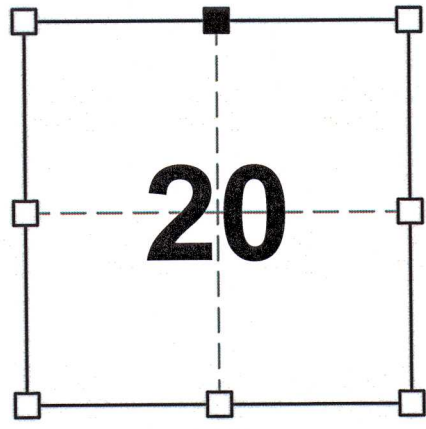


72070

GRANT COUNTY U.S. PUBLIC LAND SURVEY MONUMENT RECORD

DATUM: WISCONSIN COORDINATE REFERENCE SYSTEM (WISCRS), GRANT COUNTY, NAD 83 (2011) ADJ.	GRANT COUNTY COORDINATES	
CONTROL: MULTIPLE GPS OBSERVATIONS	NORTH	606,592.19
<i>THE NORTHWEST CORNER OF SECTION 20, TOWNSHIP 7 NORTH, RANGE 2 WEST, TOWN OF HICKORY GROVE, GRANT COUNTY, WISCONSIN.</i>	GEOGRAPHIC COORDINATES	
	LONG.	90°38'09.91321"
	LAT.	43°04'31.57766"



SECTION 20
TOWNSHIP 7 NORTH, RANGE 2 WEST
TOWN OF HICKORY GROVE

(A) IDENTIFY THE CORNER BY REFERENCE TO THE U.S. PUBLIC LAND SURVEYSYSTEM

■ = CORNER MONUMENT RESTORED

WITNESS TO CORNER LOCATION:

*JEREMY F. KRACHEY
RON D. GRANGER*

(B) DESCRIBE ANY RECORD EVIDENCE, MONUMENT EVIDENCE, OCCUPATIONAL EVIDENCE, TESTIMONIAL EVIDENCE OR ANY OTHER MATERIAL EVIDENCE YOU CONSIDERED, AND WHETHER THE MONUMENT WAS FOUND OR PLACED.

I COULD FIND NO MONUMENTS OR BEARING TREES FROM THE ORIGINAL GOVERNMENT SURVEY. ON A TIE SHEET DATED 1-14-2004, LARRY AUSTIN REPORTED SETTING A NO. 8 x 30" REBAR WITH A GRANT COUNTY ALUMINUM CAP AT THE CORNER THAT HE SET BY SINGLE PROPORTION. I DID NOT RECOVER THIS MONUMENT AS THE AREA HAS BEEN BULLDOZED CONSEQUENTLY REMOVING THE MONUMENT, FENCE LINE, THREE OF FOUR TIES, AND THE NORTH FIELD ROAD. I RECOVERED THE SOUTHERLY TIE AND USED IT TO RESET THE CORNER. I SET A 2" x 30" PIPE WITH 4" GRANT CO. BRASS CAP AT THE CORNER.

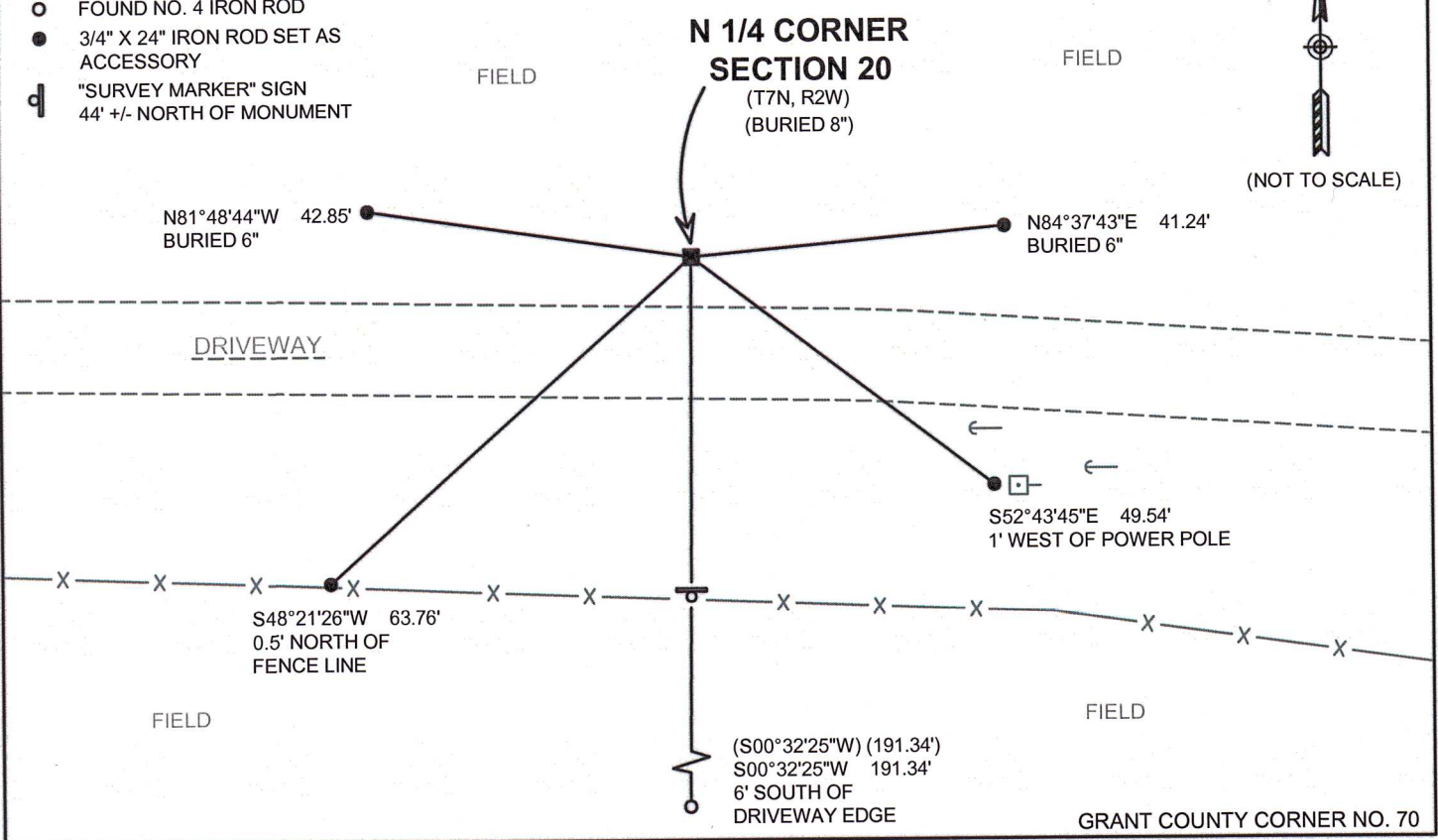
(C) IN THE PLAN VIEW DRAWING BELOW, PROVIDE REFERENCE TIES TO AT LEAST 4 WITNESS MONUMENTS OR, IF THE LOCATION IS WITHIN A MUNICIPALITY, TO AT LEAST 2 WITNESS MONUMENTS. (WITNESS MONUMENTS SHALL BE MADE ON CONCRETE, NATURAL STONE, IRON, OR OTHER EQUALLY DURABLE MATERIAL.) DESCRIBE WITNESS MONUMENTS.

LEGEND

- 2" x 30" PIPE w/ 4" GRANT CO. BRASS CAP
- FOUND NO. 4 IRON ROD
- 3/4" X 24" IRON ROD SET AS ACCESSORY
- ⊞ "SURVEY MARKER" SIGN
- 44' +/- NORTH OF MONUMENT



(NOT TO SCALE)



(D) DESCRIBE ANY MATERIAL DISCREPANCY BETWEEN THE LOCATION OF THE CORNER AS RESTORED OR ESTABLISHED AND THE LOCATION OF THAT CORNER AS PREVIOUSLY RESTORED OR REESTABLISHED BY DISTANCE AND DIRECTION. SHOW THE DISCREPANCY ON THE PLAN VIEW DRAWING UNDER (C), ABOVE. SHOW THE DISTANCES BETWEEN THE CORNER AS PREVIOUSLY RESTORED OR REESTABLISHED AND (1) THE CORNER AS RESTORED OR REESTABLISHED, AND (2) TO AT LEAST 2 OF THE WITNESS MONUMENTS AS SHOWN ON THE DRAWING IN (C), ABOVE.

N/A

(E) WAS THE CORNER RESTORED THROUGH ACCEPTANCE OF (1) AN OBLITERATED EVIDENCE LOCATION, OR (2) A FOUND PERPETUATED LOCATION?

(2) A FOUND PERPETUATED LOCATION

(F & G) WAS THE CORNER REESTABLISHED THROUGH LOST CORNER PROPORTIONATE METHODS? IF SO SHOW THE METHOD, INCLUDING THE DIRECTION AND DISTANCED TO OTHER PUBLIC LAND SURVEY CORNERS USED AS EVIDENCE OR USED FOR PROPORTIONING IN DETERMINING THE CORNER LOCATION.

N/A

CORNER HISTORY:

ORIGINAL GOVERNMENT CORNER ESTABLISHED BY HARVEY PARKE IN THE FIRST QUARTER OF 1833.

PLAT OF SURVEY DATED DECEMBER 22, 2004, LARRY AUSTIN SET A NO. 8 x 30" REBAR WITH A GRANT COUNTY ALUMINUM CAP AT THE CORNER.

TIE SHEET 1-14-2004, LARRY AUSTIN SET A NO. 8 x 30" REBAR WITH A GRANT COUNTY ALUMINUM CAP AT THE CORNER.

PLAT OF SURVEY DATED MARCH 7, 2016, AARON AUSTIN FOUND A 1" REBAR WITH A GRANT COUNTY ALUMINUM MONUMENT AT THE CORNER.

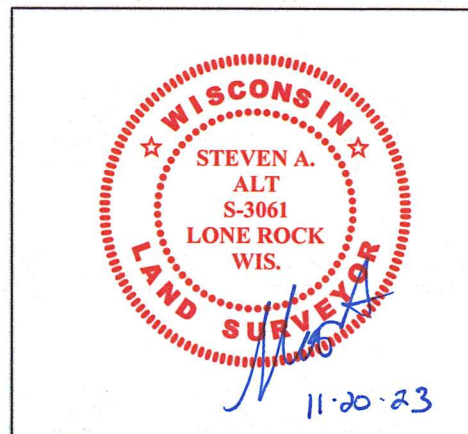
AFFIX LAND SURVEYOR SEAL

(H) I, STEVEN A. ALT, P.L.S 3061 CERTIFY THAT THE CORNER LOCATION SHOWN ON THIS RECORD WAS DETERMINED BY ME OR UNDER MY DIRECTION AND CONTROL AND THAT THIS U.S. PUBLIC LAND SURVEY MONUMENT RECORD IS CORRECT AND COMPLETE TO THE BEST OF MY KNOWLEDGE AND BELIEF.

SIGNATURE

11-20-2023

DATE



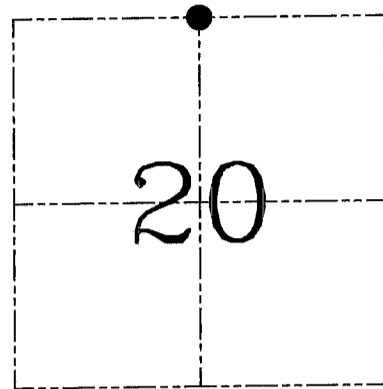
U.S. PUBLIC LAND SURVEY MONUMENT RECORD – GRANT COUNTY, WI
Section 20, Town 7 North Range 2 West, Town of Hickory Grove

CERTIFICATE

I, Larry L. Austin, do hereby certify that the corner location on this record was determined by me and/or under my direct supervision and that this U.S. public land survey monument record is correct and complete to the best of my knowledge and belief.

Dated this 14th day of January, 2004

Larry L. Austin
 Larry L. Austin S-1903



● = CORNER LOCATION

HISTORY OF CORNER ESTABLISHMENT

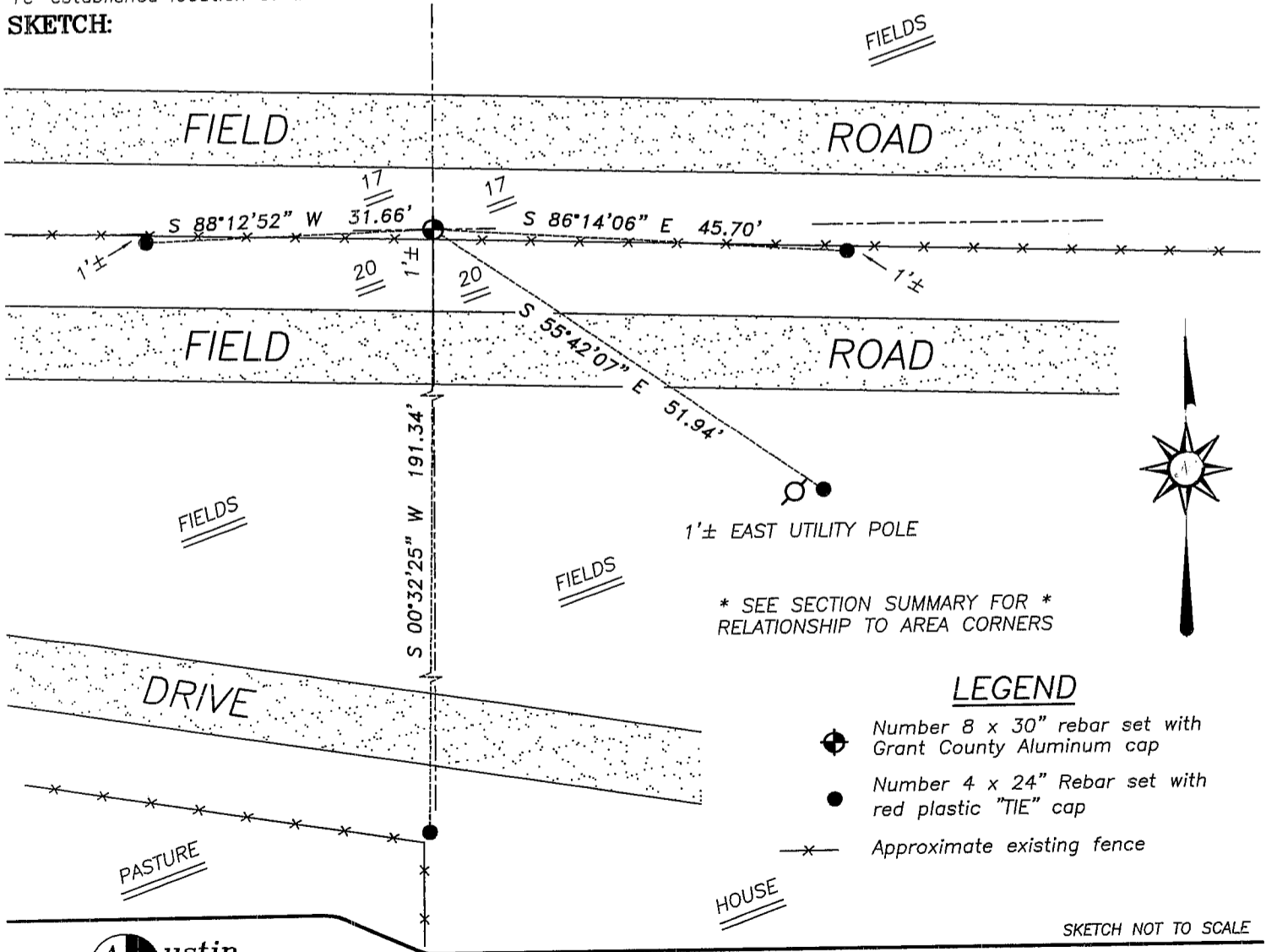
Corner was originally set in 1833 by Harvey Parke.
 No other record of the corner was found.

DESCRIPTION OF CORNER EVIDENCE FOUND

I reset the corner at a single proportion between the Northwest and Northeast corners of Section 20. Verified this location using EDM & GPS methods.

DESCRIPTION OF CORNER AND WITNESS MONUMENTS, references and accessories used to perpetuate the original or re-established location of this corner. Witnesses to corner location Bobby Sedgwick & Shelby Blindert & Brad Digan

SKETCH:

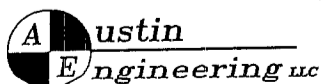


* SEE SECTION SUMMARY FOR *
 RELATIONSHIP TO AREA CORNERS

LEGEND

- ⊕ Number 8 x 30" rebar set with Grant County Aluminum cap
- Number 4 x 24" Rebar set with red plastic "TIE" cap
- x- Approximate existing fence

SKETCH NOT TO SCALE



4211 HWY 81 E, LANCASTER, WI 53813
 PHONE 608-723-6363 FAX 608-723-6702

JOB NUMBER 04S074
 FIELDBOOK: TSDR, 2405
 G:\T7NR2W\33
 H:\TIE\T7NR2W\70

DRAWN BY: SW AUSTIN
 APPROVED: LL AUSTIN