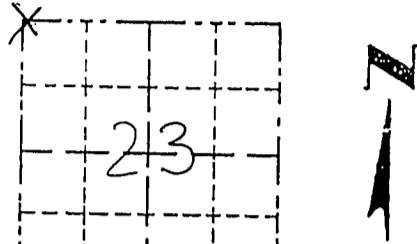


Survey Monument Record

CORNER NO. _____
 SECTION 23 JUN 21 1995
 TOWN 7N
 RANGE 2W

TYPE OF MONUMENT Grant Co. Drivable Aluminum
 STATE PLANE COORDINATES: N _____
 E _____
 ELEVATION — M.S.L. DATUM: _____
 THETA ANGLE: _____
 FIELD BOOK: 95-5
 PAGE _____



LOCATION

(Indicated by "X")

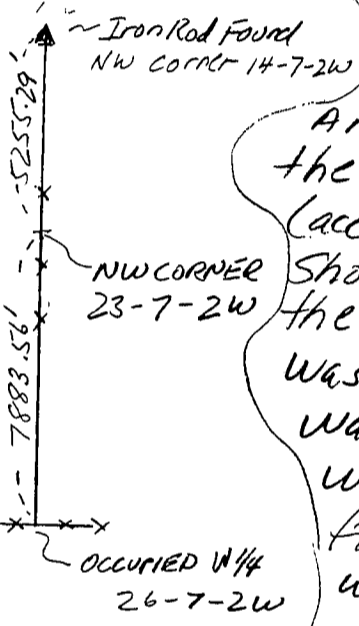
- FOUND PERPETUATED LOCATION
- OBLITERATED EVIDENCE LOCATION
- LOST CORNER (RESTORED BY PROPORTIONATE METHODS)

BASIS FOR MONUMENT LOCATION

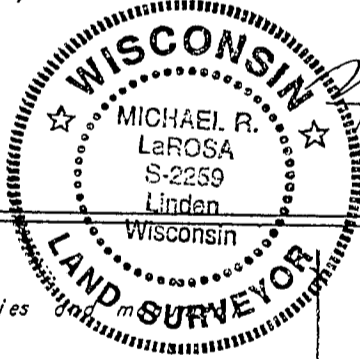
(Use reverse side if necessary)

Show info such as: History of corner, with reference to Vol. and pg., dates, surveyor; exact description of monument replaced; if location computed, by taped or EDM traverse; landowner, remarks, etc.

There are no recorded survey records of this corner since the original government survey. An occupied corner was found about 50' north of the corner. This corner was set by area farmers (according to an area resident) when they came up 100' short when they measured from north to south along the section line. (They split the difference). The northing was based on a prorate as shown and the fence was accepted for easting as it checked out well with prorates East and West. It also fit topo calls from the original notes fairly well.



CERTIFIED CORRECT TO THE BEST OF MY KNOWLEDGE AND BELIEF



Michael R. LaRosa
 Registered Land Surveyor
 DATE: 6/19/1995

TIE SKETCH

Show at least three (4) ties

Scale 1" = 40' ±

