

# Survey Monument Record

CORNER NO. \_\_\_\_\_  
 SECTION 23 JUN 21 1995  
 TOWN 7N  
 RANGE 2W

NO MONUMENT PLACED IN CORNFIELD. REFERENCE MONUMENTS WERE PLACED AS SHOWN

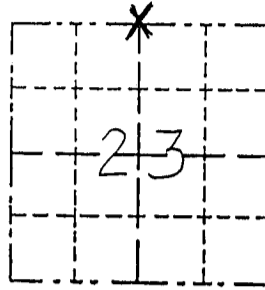
STATE PLANE COORDINATES: N \_\_\_\_\_  
 E \_\_\_\_\_

ELEVATION — M.S.L. DATUM: \_\_\_\_\_

THETA ANGLE: \_\_\_\_\_

FIELD BOOK: 95-5

PAGE \_\_\_\_\_



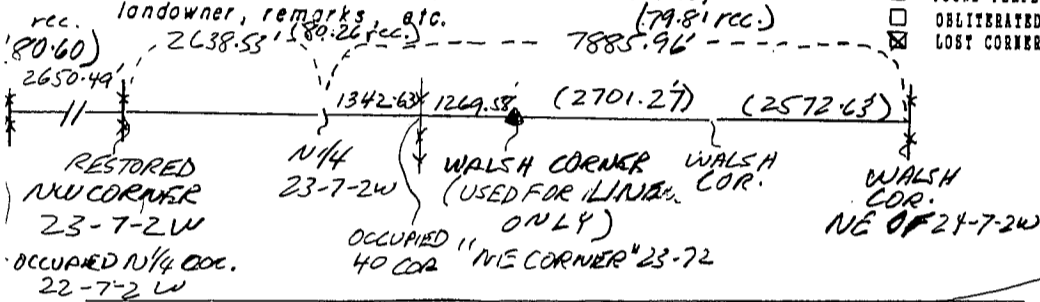
LOCATION  
 (Indicated by "X")

- FOUND PERPETUATED LOCATION
- OBLITERATED EVIDENCE LOCATION
- LOST CORNER (RESTORED BY PROPORTIONATE METHODS)

## BASIS FOR MONUMENT LOCATION

(Use reverse side if necessary)

Show info such as: History of corner, with reference to Vol. and pg., dates, surveyor; exact description of monument replaced; if location computed, by taped or EDM traverse; landowner, remarks, etc.



There are no recorded surveys noting this corner since the original government survey. There is no occupational evidence as corner falls in a cornfield. The restored corner location was based on a "long" prorate between the NW corner of 23-7-2 and the NE corner of 24-7-2 and placed on a line between the NW corner of 23-7-2 and a 3/4" Iron rod found (Walsh survey and tie sheet (283/1995)) purported to be the NE corner of 23-7-2. Relationships to other corners, occupied and monumented are shown above.

CERTIFIED CORRECT TO THE BEST OF MY KNOWLEDGE AND BELIEF

Michael R. LaRosa  
 Registered Land Surveyor  
 DATE: 6/19/1995



## TIE SKETCH

Show at least three (3) \_\_\_\_\_

Scale 1" = 50' ±

### LEGEND

- FENCE
- RAILROAD SPLIT SET
- ( ) recorded as

