

U.S. PUBLIC LAND SURVEY MONUMENT RECORD - GRANT COUNTY, WI

Section 13, Town 7 North Range 2 West, Town of Hickory Grove (a)

NOTE: This form is intended and designed to fulfill all requirements of the Wisconsin Administrative Code Chapter A-E 7.08, U.S. Public Land Survey Monument Record (3) (a) (b) (c) (d) (e) (f) (g) (h) (i).

CERTIFICATE: (i)

I, Aaron J. Austin, Wisconsin Professional Land Surveyor, do hereby certify that the corner location on this record was determined by me and/or under my direct supervision and that this U.S. Public Land Survey Monument Record is correct and complete to the best of my knowledge and belief.

Dated this 11th day of September, 2017.

Aaron J. Austin (signature)

Aaron J. Austin, S-2922



Grant County Coordinates: NAD 83 (2011) Northing: 606,442.17 Easting: 860,003.74

HISTORY OF CORNER ESTABLISHMENT:

Original corner was set in 1833 by Harvey Parke. Sean Walsh set a 3/4" Rebar and prepared a Survey Monument Record dated 3/15/1995.

DESCRIPTION OF CORNER EVIDENCE FOUND: (b) (f) (g) (h)

I found the 3/4" Rebar and two witness corners Walsh set. I set two additional witness corners after I verified the Monument's location with G.P.S. and E.D.M. methods.

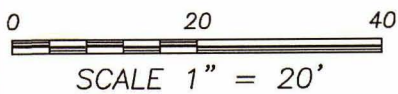
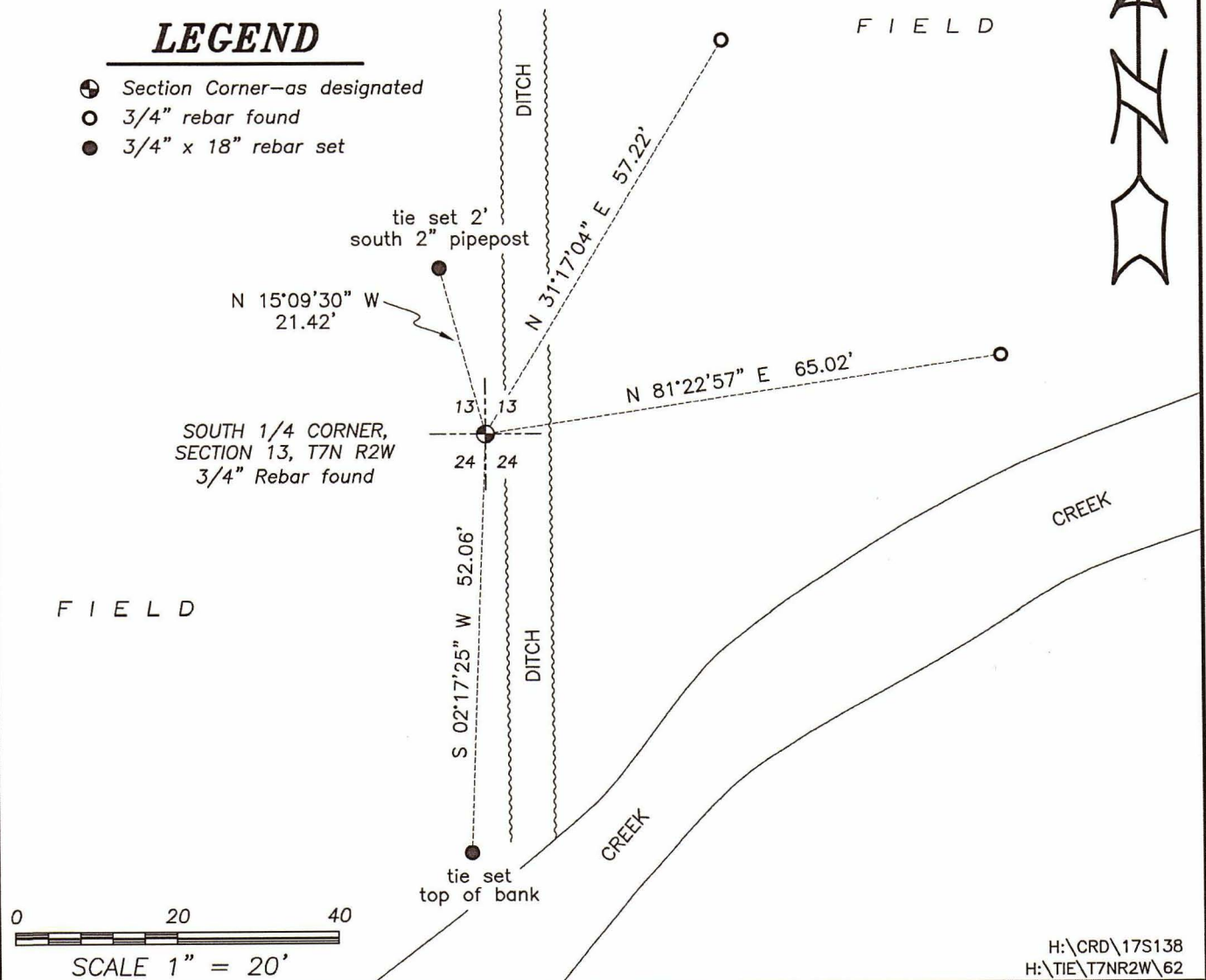
DESCRIPTION OF CORNER AND WITNESS MONUMENTS, references and accessories used to perpetuate the original or re-established location of this corner. (c) (d) (e)

Witnesses to corner location Shane Austin, Aaron Austin. Drawn by: Owen Austin

SKETCH:

LEGEND

- Section Corner—as designated
3/4" rebar found
3/4" x 18" rebar set



MAR 28 1995

# GOVERNMENT CORNER RECORD

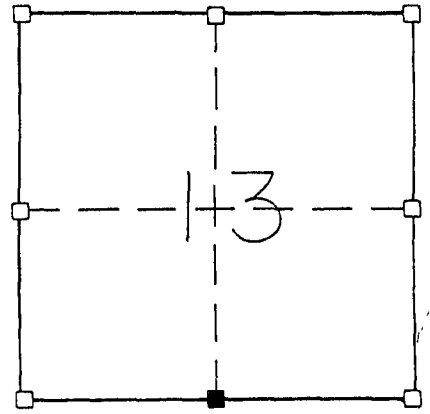
South 1/4 CORNER, SECTION 13, TOWNSHIP 7 NORTH, RANGE 2 EAST-WEST,  
TOWN, CITY OR VILLAGE OF Hickory Grove  
TYPE OF MONUMENT: 3/4" x 24" Iron Rod Placed ELEVATION - M.S.L. DATUM \_\_\_\_\_

WITNESSES TO CORNER LOCATION

Sean M. Walsh

Christopher G. Reedy

SECTION 13, T 7 N, R 2 EW  
TOWN OF Hickory Grove



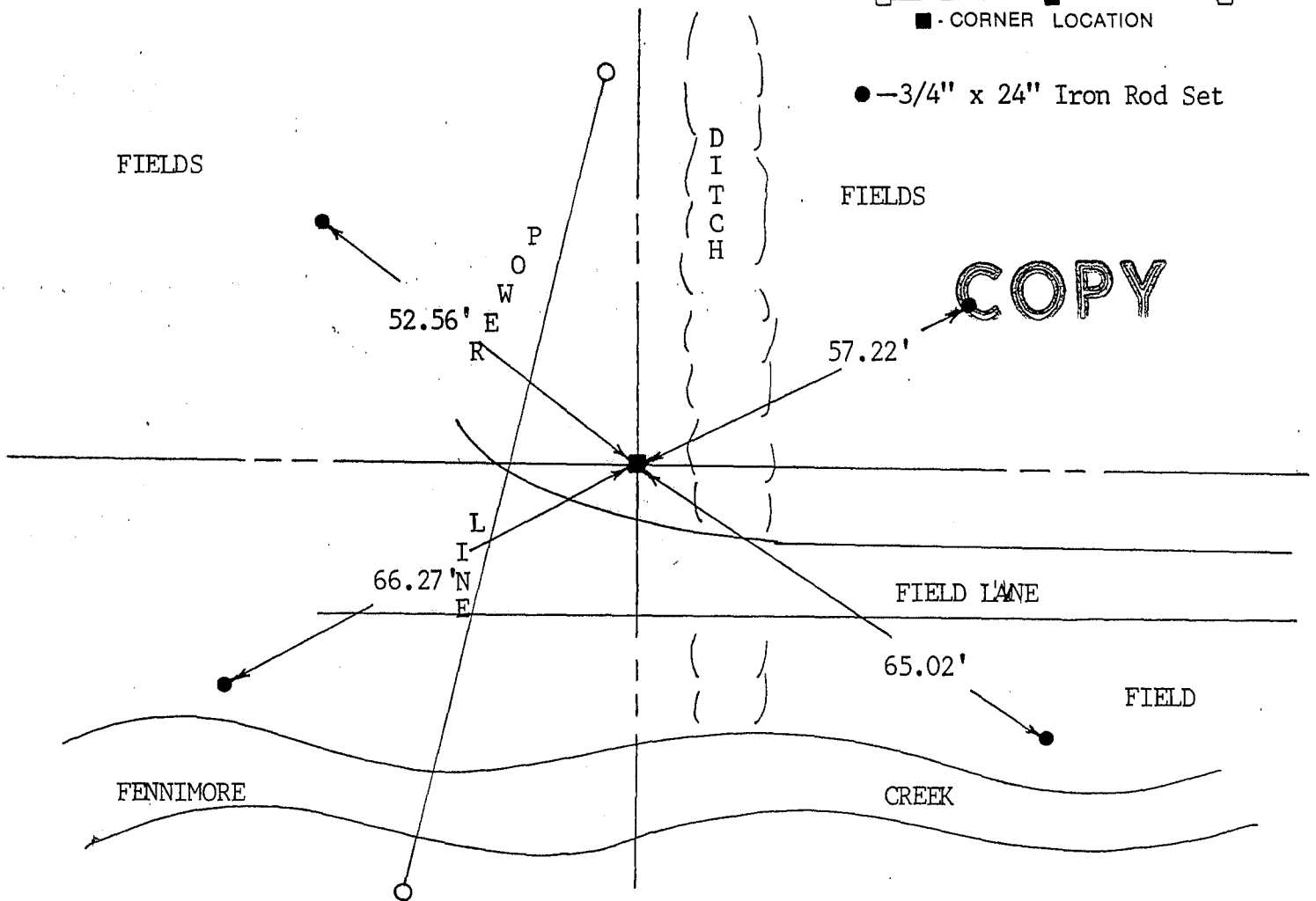
NORTH

TIE SKETCH  
(SHOW ALL HELPFUL FEATURES)

FIELDS

FIELDS

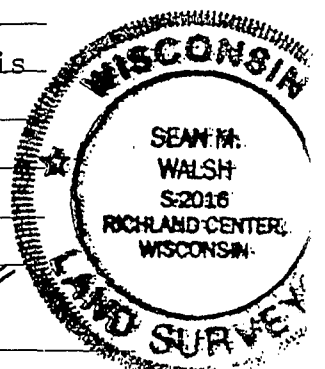
● - 3/4" x 24" Iron Rod Set



SURVEYOR'S CERTIFICATE

SEAL S. 2016

I, Sean M. Walsh, DO HEREBY CERTIFY THAT I have established this corner at a location where I found the remains of an old fence post, this location fits well with the remainder of Section 13, thus I accepted it as the best available evidence. This information is correct and true to the best of my knowledge and belief.



DATED THIS 15 DAY OF MARCH, 19 95

Sean M. Walsh  
REGISTERED LAND SURVEYOR