

U.S. PUBLIC LAND SURVEY MONUMENT RECORD - GRANT COUNTY, WI

Section 13, Town 7 North Range 2 West, Town of Hickory Grove (a)

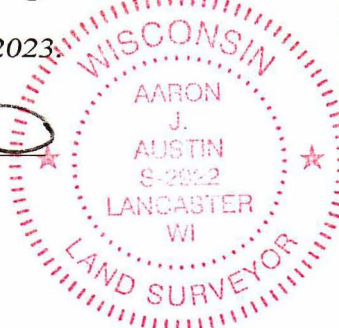
NOTE: This form is intended and designed to fulfill all requirements of the Wisconsin Administrative Code Chapter A-E 7.08, U.S. Public Land Survey Monument Record (3) (a) (b) (c) (d) (e) (f) (g) (h) (i).

CERTIFICATE: (i)

I, Aaron J. Austin, Wisconsin Professional Land Surveyor, do hereby certify that the corner location on this record was determined by me and/or under my direct supervision and that this U.S. Public Land Survey Monument Record is correct and complete to the best of my knowledge and belief.

Dated this 13th day of February, 2023.

Aaron J. Austin
Aaron J. Austin, S-2922



Grant County Coordinates:
NAD 83 (2011)
Northing: 606,483.81
Easting: 862,575.80

HISTORY OF CORNER ESTABLISHMENT:

Original corner was set in 1832 by Lucius Lyon.
Sean Walsh set 3/4" Rebar and prepared a Survey Monument Record dated 3/15/1995.

DESCRIPTION OF CORNER EVIDENCE FOUND: (b) (f) (g) (h)

I found the 3/4" Rebar and one witness corner Walsh set. I set three witness corners after I verified the Monument's location with G.P.S. and E.D.M. methods.

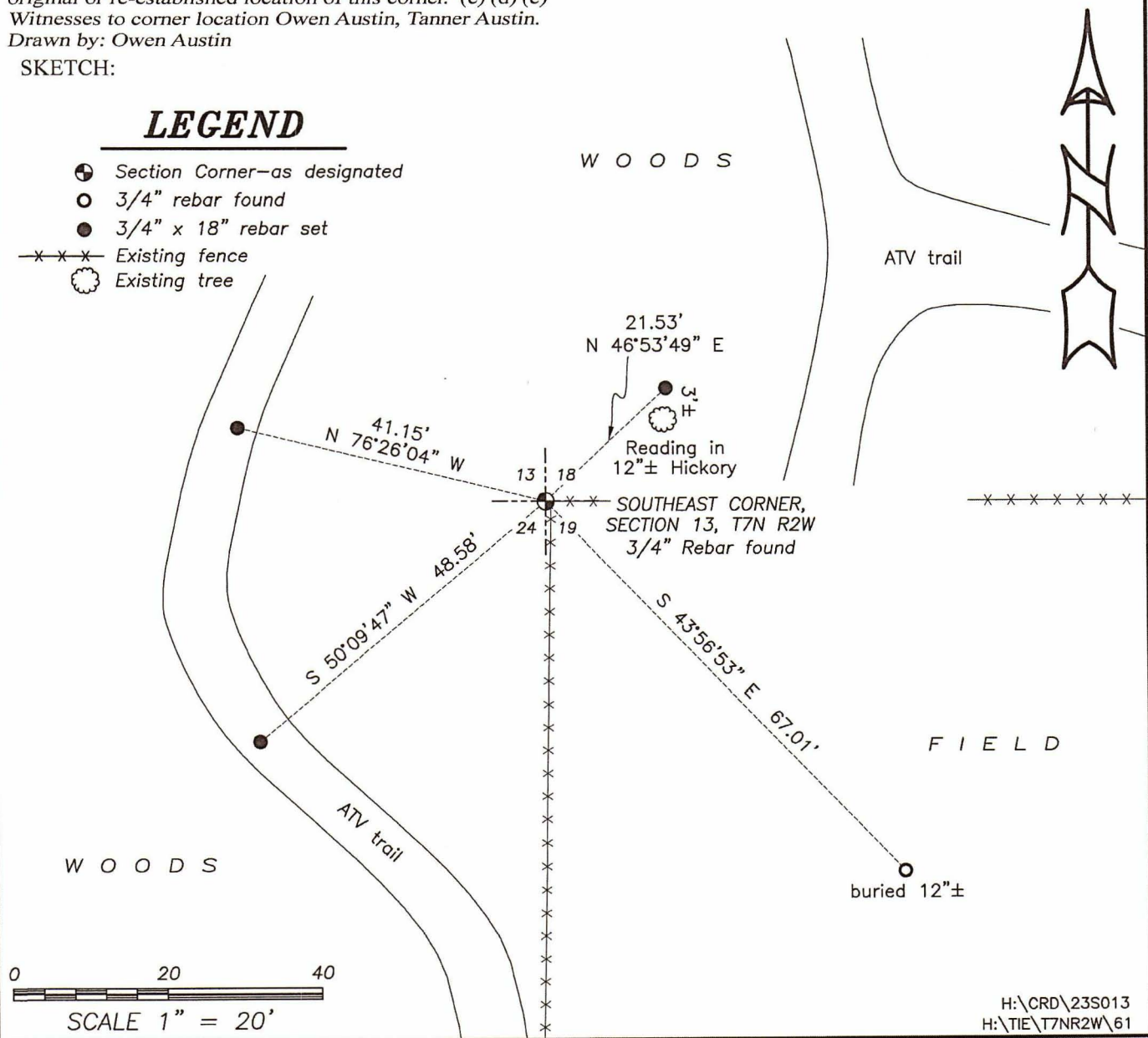
DESCRIPTION OF CORNER AND WITNESS MONUMENTS, references and accessories used to perpetuate the original or re-established location of this corner. (c) (d) (e)

Witnesses to corner location Owen Austin, Tanner Austin.
Drawn by: Owen Austin

SKETCH:

LEGEND

- ⊕ Section Corner—as designated
- 3/4" rebar found
- 3/4" x 18" rebar set
- x-x-x- Existing fence
- ⊙ Existing tree



MAR 28 1995

GOVERNMENT CORNER RECORD

SOUTHEAST CORNER, SECTION 13, TOWNSHIP 7 NORTH, RANGE 2 EAST - WEST,

TOWN, CITY OR VILLAGE OF HICKORY GROVE

TYPE OF MONUMENT: 3/4" X 24" IRON ROD

ELEVATION - M.S.L. DATUM _____

WITNESSES TO CORNER LOCATION

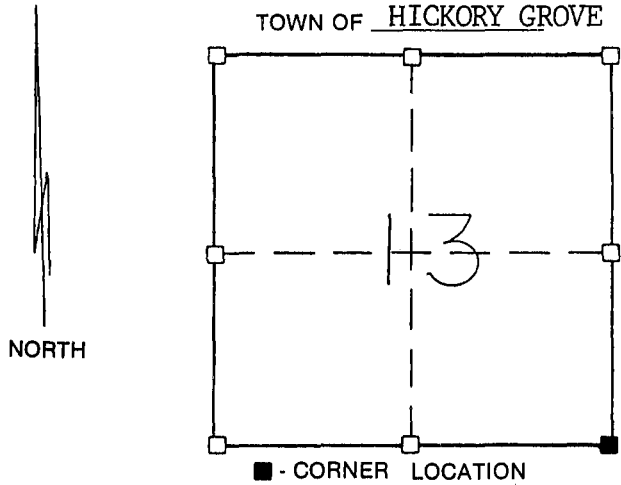
Christopher G. Reedy

Curtis J. Cumber

Sean M. Walsh

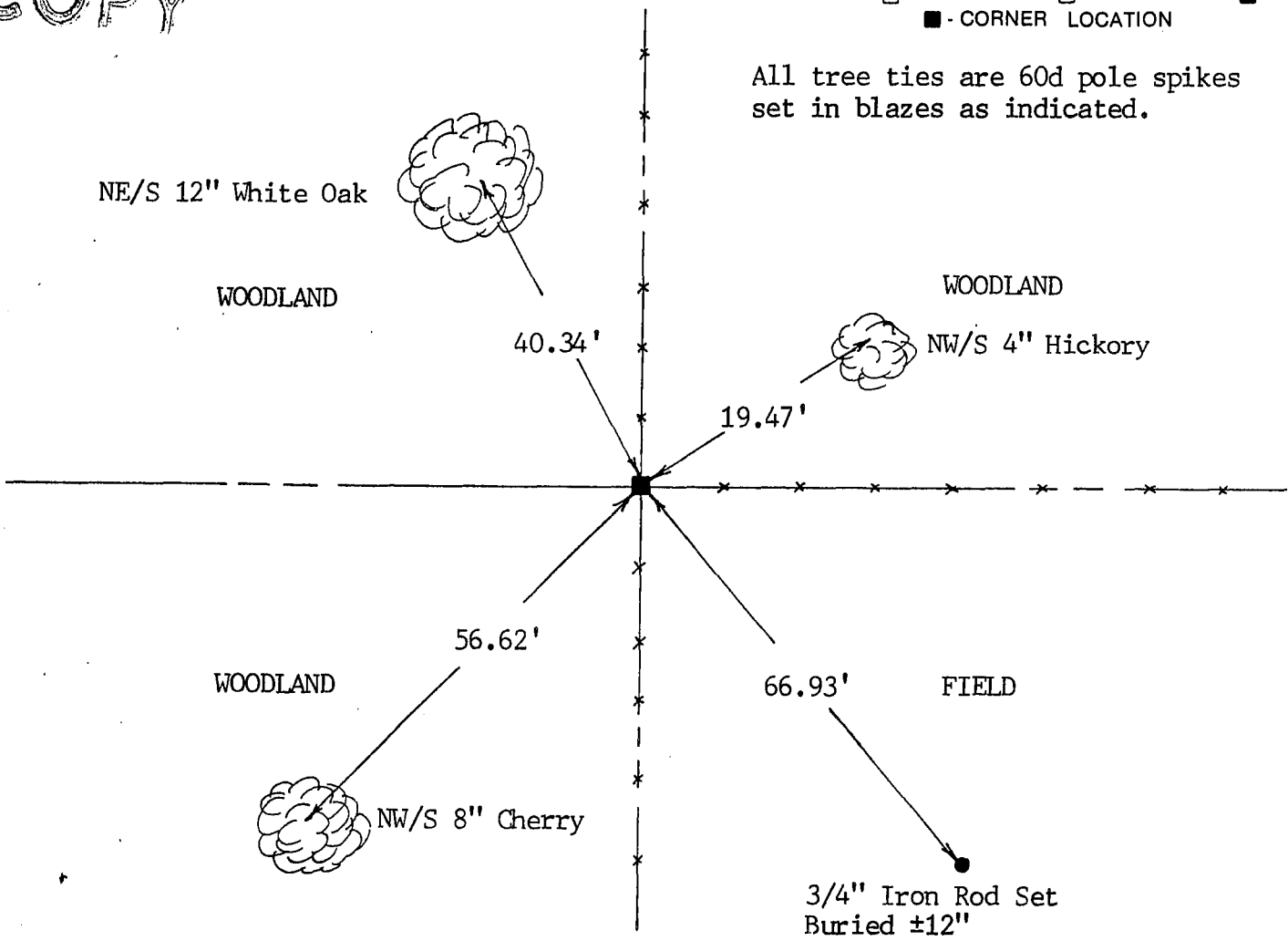
SECTION 13, T 7 N, R 2 EW

TOWN OF HICKORY GROVE



TIE SKETCH
(SHOW ALL HELPFUL FEATURES)

COPY

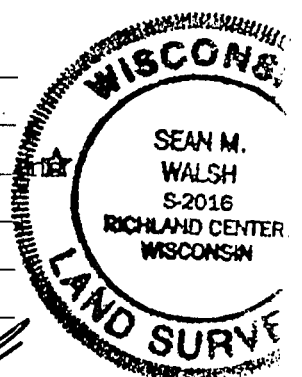


All tree ties are 60d pole spikes set in blazes as indicated.

SURVEYOR'S CERTIFICATE

SEAL S- 2016

I, Sean M. Walsh, DO HEREBY CERTIFY THAT I have established this
corner at the location of physical occupation as it provides the only
acceptable evidence of this corner location. This information is correct
true to the best of my knowledge, information and belief.



DATED THIS 15 DAY OF MARCH, 1995

Sean M. Walsh
REGISTERED LAND SURVEYOR