

U.S. PUBLIC LAND SURVEY MONUMENT RECORD - GRANT COUNTY, WI

Section 13, Town 7 North Range 2 West, Town of Hickory Grove (a)

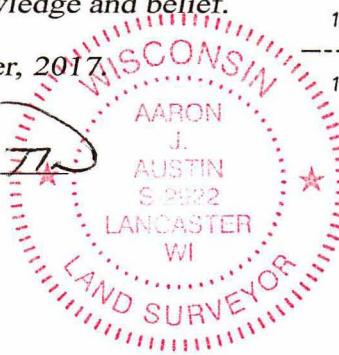
NOTE: This form is intended and designed to fulfill all requirements of the Wisconsin Administrative Code Chapter A-E 7.08, U.S. Public Land Survey Monument Record (3) (a) (b) (c) (d) (e) (f) (g) (h) (i).

CERTIFICATE: (i)

I, Aaron J. Austin, Wisconsin Professional Land Surveyor, do hereby certify that the corner location on this record was determined by me and/or under my direct supervision and that this U.S. Public Land Survey Monument Record is correct and complete to the best of my knowledge and belief.

Dated this 11th day of September, 2017

Aaron J. Austin
 Aaron J. Austin, S-2922



Grant County Coordinates:
 NAD 83 (2011)
 Northing: 609,143.75
 Easting: 857,305.85

⊕ = CORNER LOCATION

HISTORY OF CORNER ESTABLISHMENT:

Original corner was set in 1833 by Harvey Parke.
 Sean Walsh set a 3/4" Rebar and prepared a Survey monument Record dated 3/15/1995.

DESCRIPTION OF CORNER EVIDENCE FOUND: (b) (f) (g) (h)

I found the 3/4" Rebar Walsh set. I set four witness corners after I verified the Monument's location with G.P.S. and E.D.M. methods.

DESCRIPTION OF CORNER AND WITNESS MONUMENTS,

references and accessories used to perpetuate the

original or re-established location of this corner. (c) (d) (e)

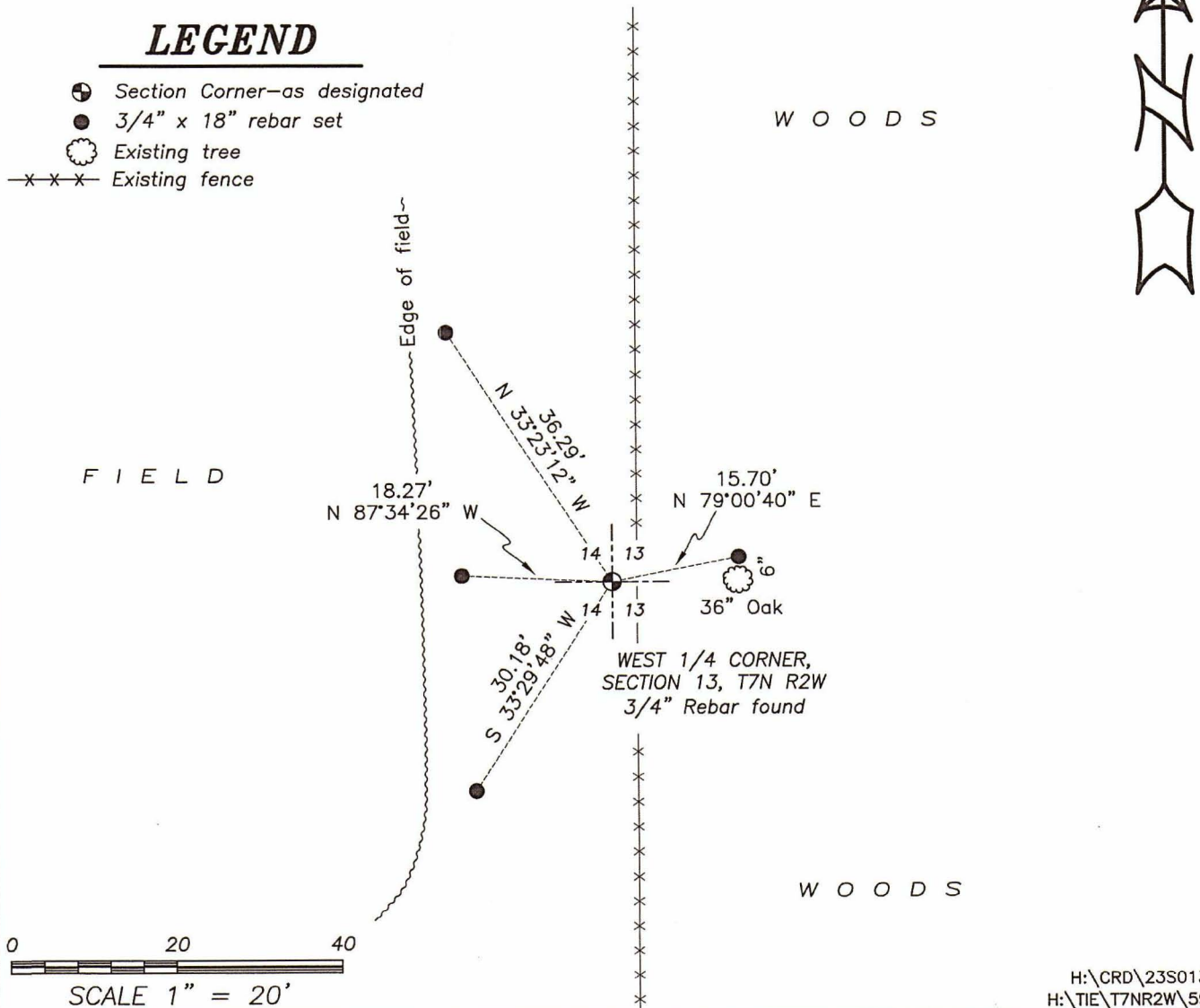
Witnesses to corner location Shane Austin, Aaron Austin.

Drawn by Owen Austin

SKETCH:

LEGEND

- ⊕ Section Corner—as designated
- 3/4" x 18" rebar set
- ⊙ Existing tree
- x-x-x- Existing fence



MAR 28 1995

GOVERNMENT CORNER RECORD

WEST 1/4 CORNER, SECTION 13, TOWNSHIP 7 NORTH, RANGE 2 EAST - WEST,

TOWN, CITY OR VILLAGE OF HICKORY GROVE

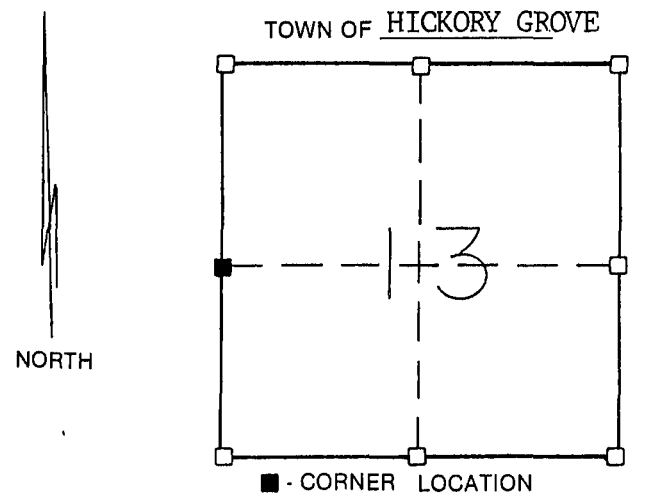
TYPE OF MONUMENT: 3/4" X 24" IRON ROD ELEVATION - M.S.L. DATUM

WITNESSES TO CORNER LOCATION

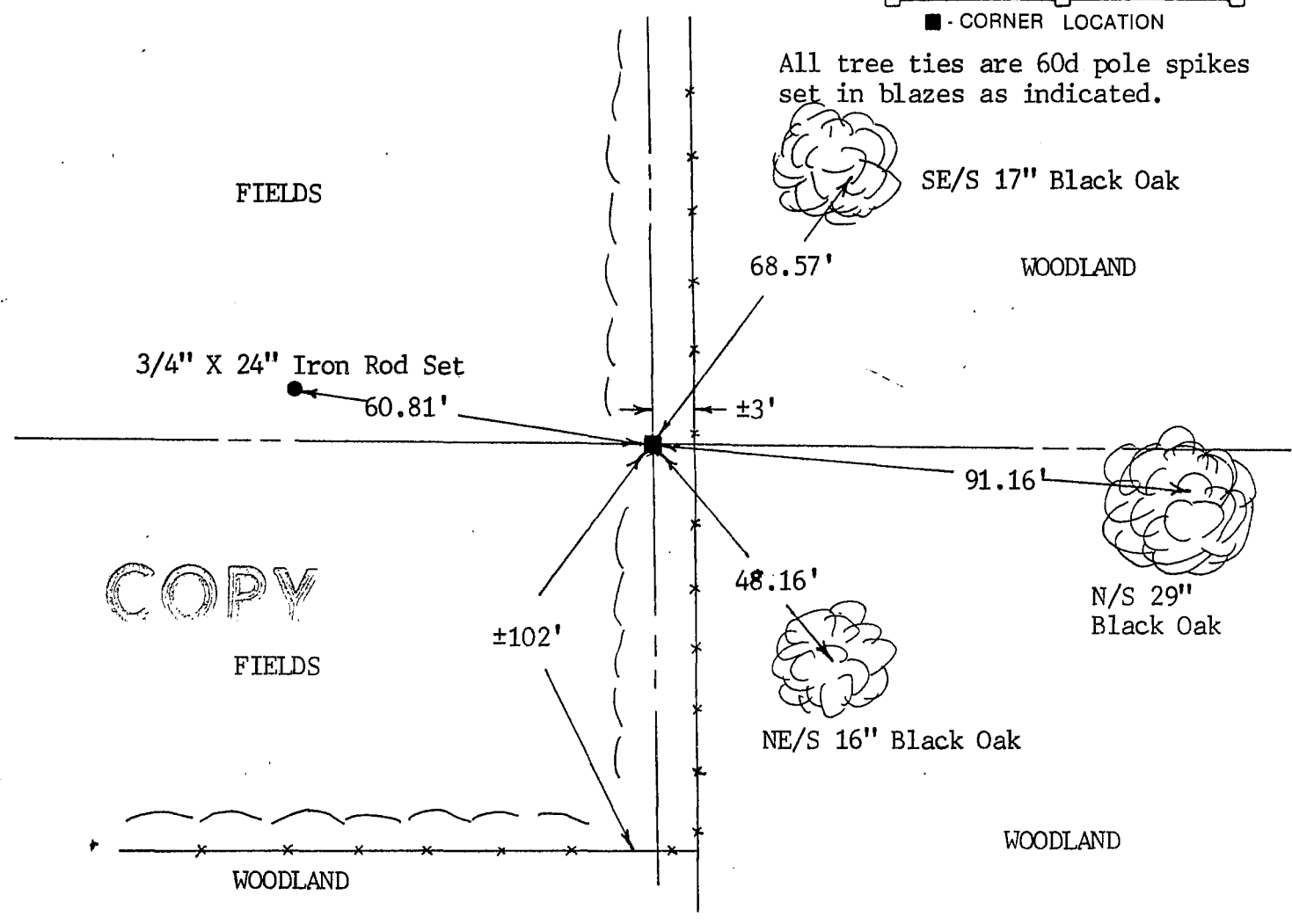
Sean M. Walsh
Christopher G. Reedy

SECTION 13, T 7 N, R 2 EW

TOWN OF HICKORY GROVE



TIE SKETCH (SHOW ALL HELPFUL FEATURES)



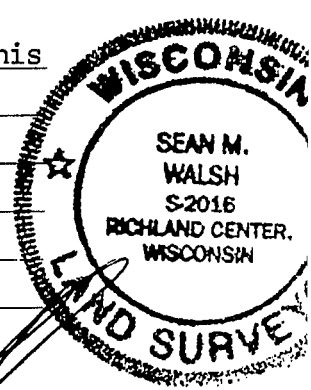
All tree ties are 60d pole spikes set in blazes as indicated.

COPY FIELDS

SURVEYOR'S CERTIFICATE

SEAL S. 2016

I, Sean M. Walsh, DO HEREBY CERTIFY THAT I have re-established this corner at a location which is at the proportionate projection of the occupied forty corners along the West line of Section 13, There is no acceptable evidence indicating any other location for this corner. This information is correct and true to the best of my information, knowledge and belief.



DATED THIS 15 DAY OF MARCH, 19 95

Sean M. Walsh
REGISTERED LAND SURVEYOR