

U.S. PUBLIC LAND SURVEY MONUMENT RECORD - GRANT COUNTY, WI

Section 16, Town 7 North Range 2 West, Town of Hickory Grove (a)

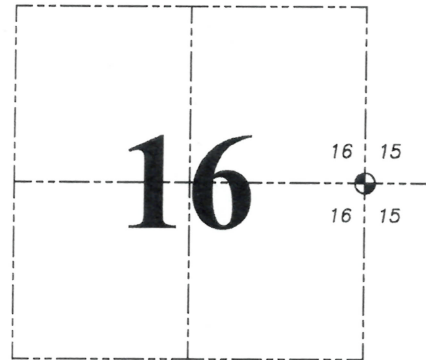
NOTE: This form is intended and designed to fulfill all requirements of the Wisconsin Administrative Code Chapter A-E 7.08, U.S. Public Land Survey Monument Record (3) (a) (b) (c) (d) (e) (f) (g) (h) (i).

CERTIFICATE: (i)

I, Aaron J. Austin, Wisconsin Professional Land Surveyor, do hereby certify that the corner location on this record was determined by me and/or under my direct supervision and that this U.S. Public Land Survey Monument Record is correct and complete to the best of my knowledge and belief.

Dated this 2nd day of May, 2025.

Aaron J. Austin
 Aaron J. Austin, PLS-2922



⊙ = CORNER LOCATION

Grant County Coordinates:
 NAD 83 (2011)
 Northing: 609,095.57
 Easting: 846,726.34

HISTORY OF CORNER ESTABLISHMENT:

Original corner was set in 1833 by Harvey Parke. Laurnce Schmit set a 7/8" Rebar with a Grant County Aluminum Cap and prepared a Survey Monument Record dated 8-17-2000.

DESCRIPTION OF CORNER EVIDENCE FOUND: (b) (f) (g) (h)

The 7/8" Rebar and old fence corner were gone. I set a 1" Rebar at the recorded distances to the Northeast corner of Section 16 and the West 1/4 corner of Section 16 from a plat of survey filed in Book 8, Page 89. I found one witness corner and set three witness corners after I verified the Monument's location with G.P.S. methods.

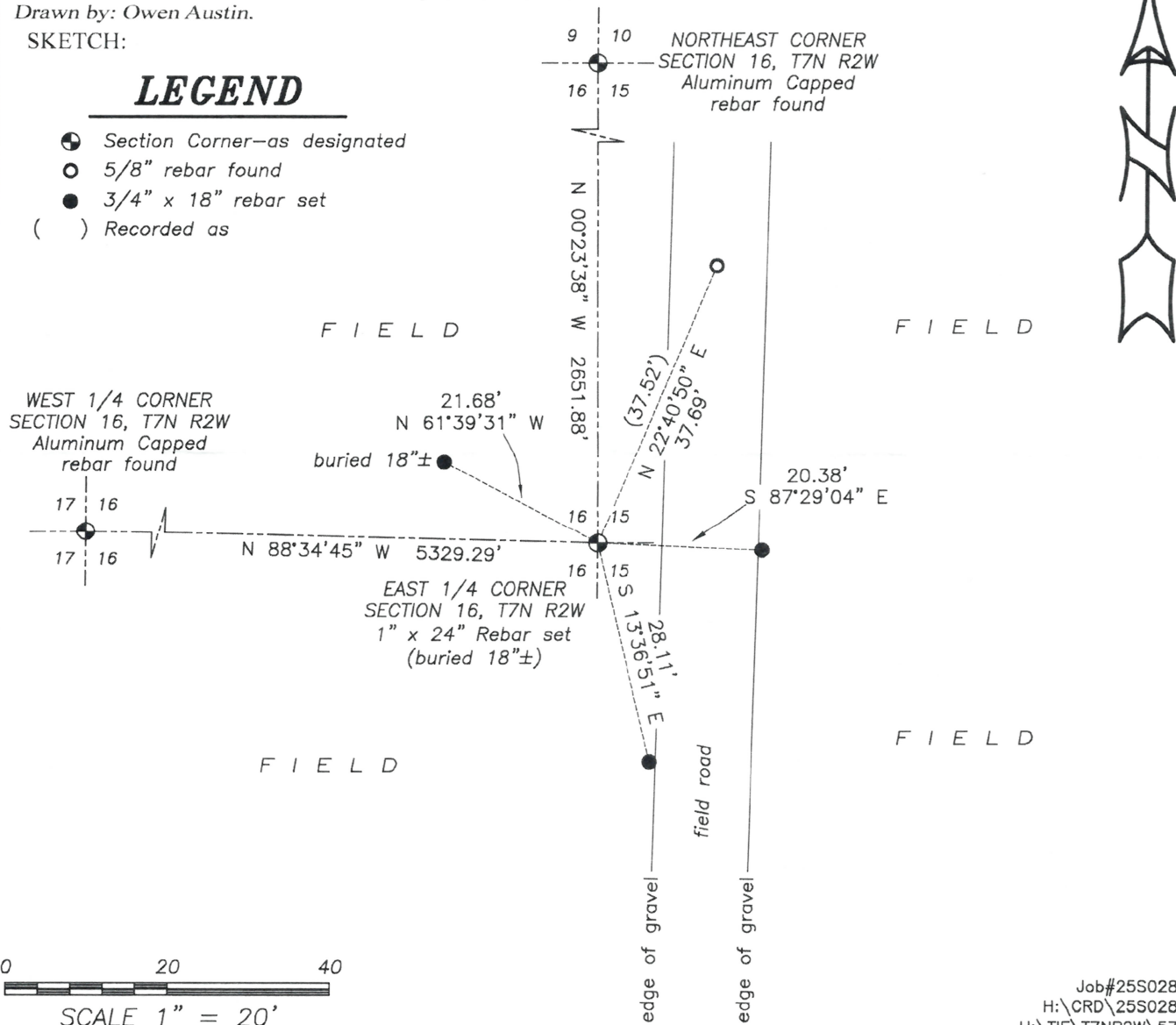
DESCRIPTION OF CORNER AND WITNESS MONUMENTS, references and accessories used to perpetuate the original or re-established location of this corner. (c) (d) (e)

Witnesses to corner location Owen Austin, Tanner Austin.
 Drawn by: Owen Austin.

SKETCH:

LEGEND

- ⊙ Section Corner—as designated
- 5/8" rebar found
- 3/4" x 18" rebar set
- () Recorded as



U.S. PUBLIC LAND SURVEY MONUMENT RECORD

(As Required By s. A-E 7.08, WI Adm. Code)

History of original corner establishment and subsequent restorations and description of any record, monument, occupational, testimonial or other evidence considered:

HISTORY IS THE ORIG. GOVT SURVEY ACCEPTED A WEST & SOUTH FENCE INTERSECTION AS COR AFTER EDM & GPS TRAVERSE OF SECTIONS 16 & 15 FOR PHYSICAL EVIDENCE

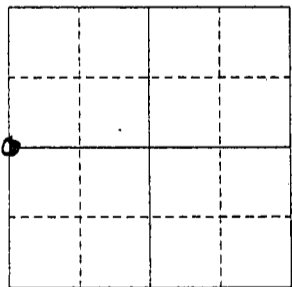
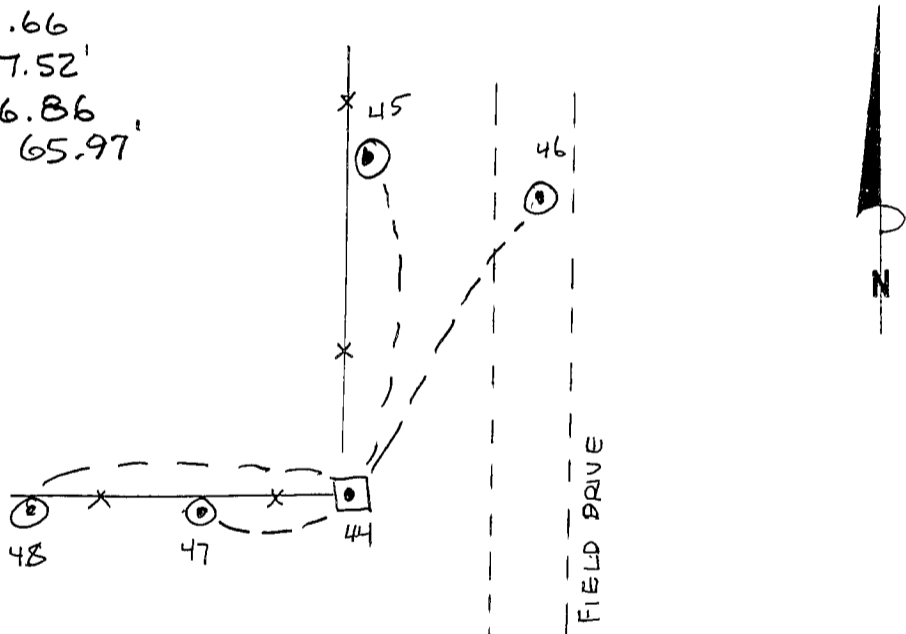
Corner was: (Check All That Apply)

- Restored through acceptance of an obliterated evidence location
- Restored through acceptance of a found perpetuated location
- Considered a lost corner and reestablished through lost corner proportionate methods (include a plan view drawing showing distances and directions to other Public Land Survey Corners used for proportioning and determining the corner location)
- Restored or reestablished in a location that differs from a previous restoration or reestablishment (include a plan view drawing and indicate what was set and/or found)

Describe the monument and accessories used to perpetuate the location of this corner. (Include a plan view drawing and indicate what was set and/or found)

44-45 N 4° 48' 49" E 8.66
 44-46 N 23° 39' 56" E 37.52'
 44-47 S 87° 21' 56" W 16.86
 44-48 S 89° 45' 48" W 65.97'

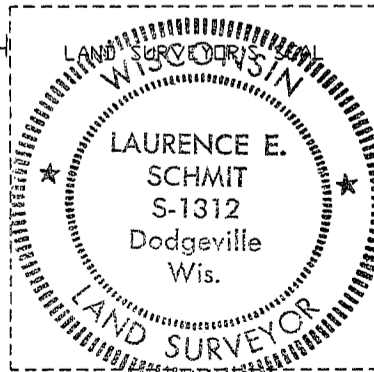
The W 1/4 COR.
 corner of Section 15
 T. 7 N., R. 2W E.,
GRANT County, Wisconsin
 Job ID: 2000S-77
 Book # 2000-3 P.29



LEGEND

- SET 7/8" x 24" REBAR WITH GRANT CO. ALUM CAP
- X — FENCE
- ⊙ SET 5/8" REBAR TIE

● = Location of Corner



I, LAURENCE E. SCHMIT
 Type or print name) certify that the corner location shown on this record was determined by me or under my direction and control and that this U.S. Public Land Survey Monument Record is correct and complete to the best of my knowledge and belief.

Laurence E. Schmit 8.17.2000
 Signature Date

Index No. 57