

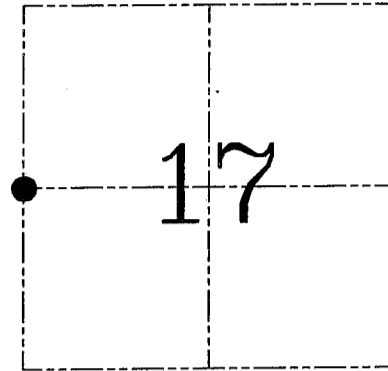
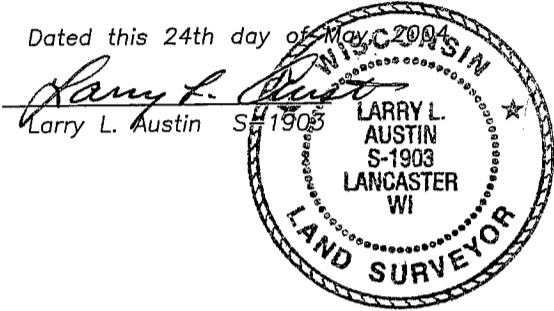
U.S. PUBLIC LAND SURVEY MONUMENT RECORD – GRANT COUNTY, WI

Section 17, Town 7 North Range 2 West, Town of Hickory Grove

CERTIFICATE

I, Larry L. Austin, do hereby certify that the corner location on this record was determined by me and/or under my direct supervision and that this U.S. public land survey monument record is correct and complete to the best of my knowledge and belief.

Dated this 24th day of May, 2004



● = CORNER LOCATION

HISTORY OF CORNER ESTABLISHMENT

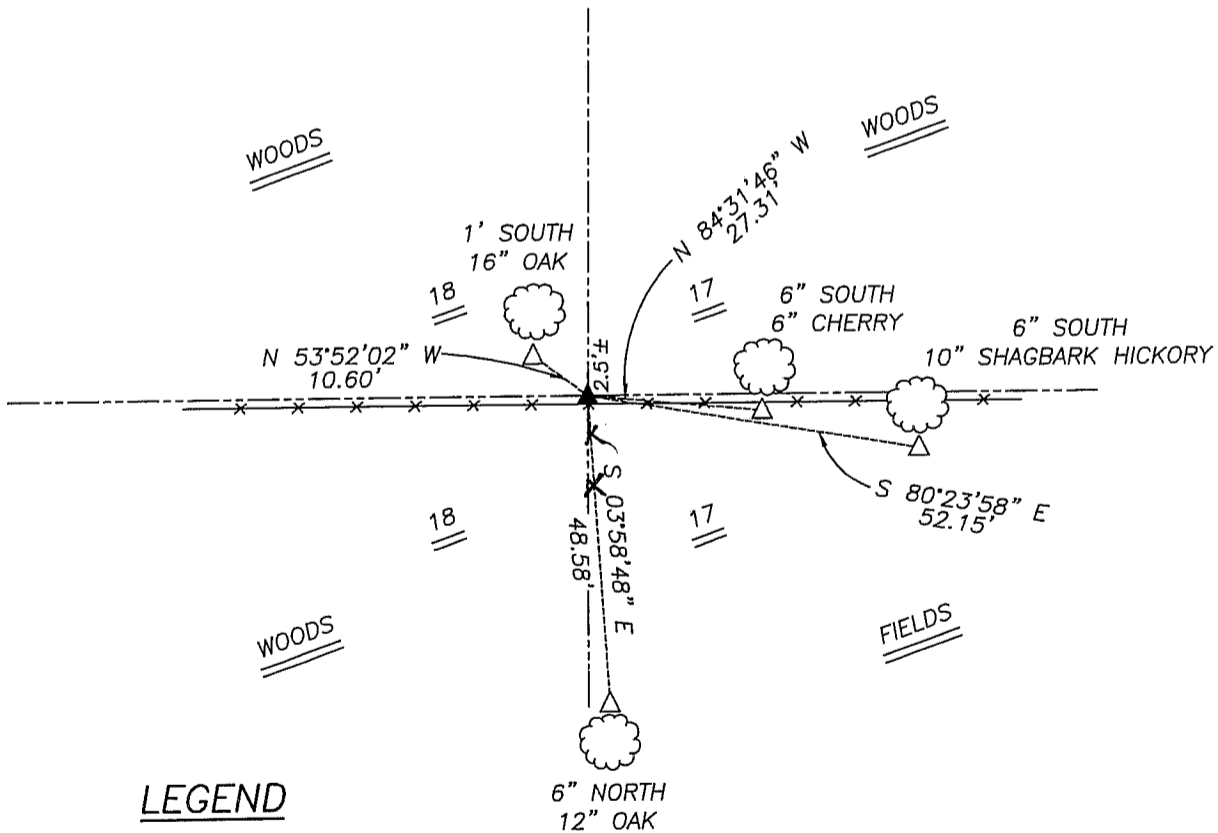
Corner was originally set in 1833 by Parke.
No other record of the corner was found.

DESCRIPTION OF CORNER EVIDENCE FOUND

I found a 1" iron pipe at a fence intersection. I accepted it's location after an EDM & GPS traverse of the area.

DESCRIPTION OF CORNER AND WITNESS MONUMENTS, references and accessories used to perpetuate the original or re-established location of this corner. Witnesses to corner location Shelby Blindert and Brad Digman.

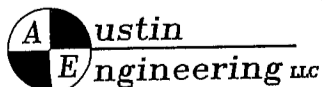
SKETCH:



LEGEND

- △ 1/2" diameter iron pipe found
- ▲ 1" diameter iron pipe found
- x— Approximate existing fence

SKETCH NOT TO SCALE



4211 HWY 81 E, LANCASTER, WI 53813
PHONE 608-723-6363 FAX 608-723-6702

JOB NUMBER 04S051
FIELDBOOK: TSDR, 2332
G:\T7NR2W\02
H:\TIE\TTNR2W\55

DRAWN BY: C RUTTER
APPROVED: LL AUSTIN