

U.S. PUBLIC LAND SURVEY MONUMENT RECORD

(As Required By s. A-E 7.08, WI Adm. Code)

History of original corner establishment and subsequent restorations and description of any record, monument, occupational, testimonial or other evidence considered:

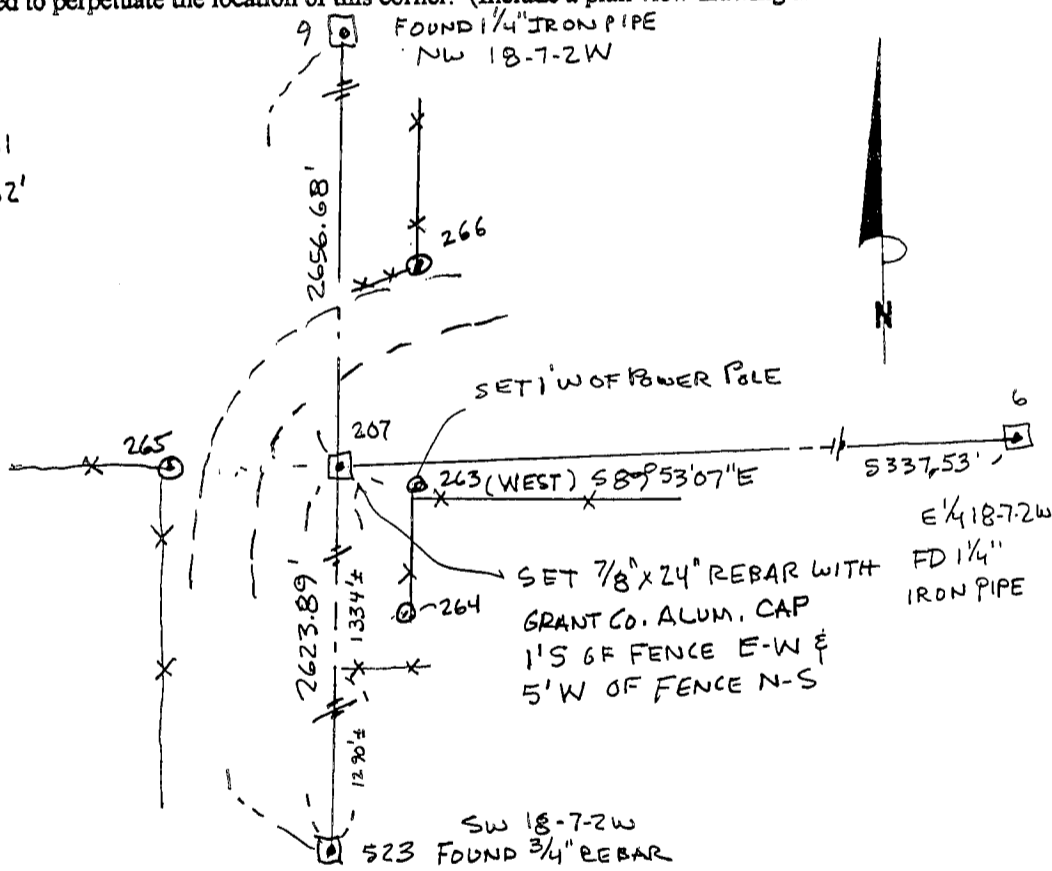
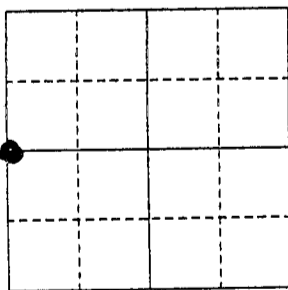
HISTORY IS THE ORIGINAL GOUT SURVEY. A SURVEY FOR EARL SHAEFER SHOWS THE E-W 1/4 LINE OF SECTION 18. I RETRACED LINE FROM THAT SURVEY TO INTERSECT EXISTING MONUMENTS AT THE NW & SW SECTION CORNER OF SECTION 18. THE CORNER LOCATION RESULTING FITS BETTER TO OCCUPATION EVIDENCE FOUND ALONG THE W LINE OF SECTION 18 THAN THE CORNER LOCATION RESULTING FROM SINGLE Corner was: (Check All That Apply) PROPORTIONATE MEASUREMENT BETWEEN NW & SW CORNER MONUMENTS AS FOUND

- Restored through acceptance of an obliterated evidence location
- Restored through acceptance of a found perpetuated location
- Considered a lost corner and reestablished through lost corner proportionate methods (include a plan view drawing showing distances and directions to other Public Land Survey Corners used for proportioning and determining the corner location)
- Restored or reestablished in a location that differs from a previous restoration or reestablishment (include a plan view drawing and indicate what was set and /or found)

Describe the monument and accessories used to perpetuate the location of this corner. (Include a plan view drawing and indicate what was set and/or found)

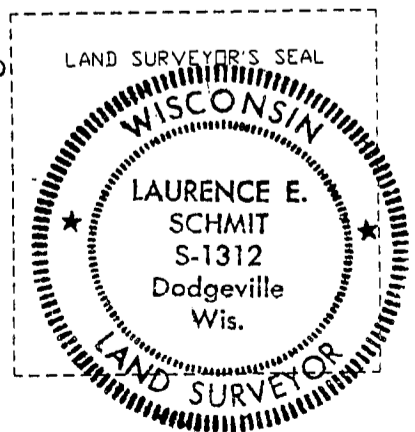
207-263 S65°17'18"E 10.99
 207-264 S130°31'46"E 27.08
 207-265 S87°54'19"W 52.61
 207-266 N4°53'58"E 57.62'

The W 1/4
 corner of Section 18
 T. 7N N., R. 2W
GRANT County, Wisconsin
 Job ID: 995-252
 Book # _____



LEGEND:

- SECTION CORNER AS DESCRIBED
- () RECORDED AS



I, LAURENCE E. SCHMIT
 (Type or print name) certify that the corner location shown on this record was determined by me or under my direction and control and that this U.S. Public Land Survey Monument Record is correct and complete to the best of my knowledge and belief.
Laurence E. Schmit 9-29-2000
 Signature Date

Index No. 54