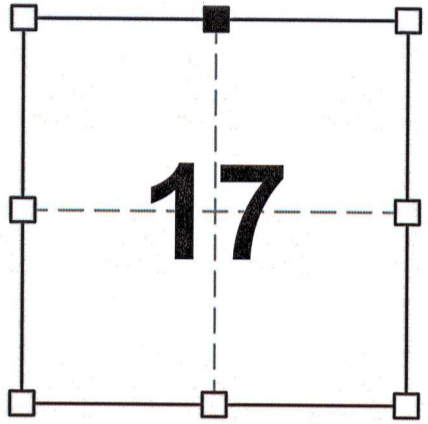


72050

GRANT COUNTY U.S. PUBLIC LAND SURVEY MONUMENT RECORD

DATUM: WISCONSIN COORDINATE REFERENCE SYSTEM (WISCRS), GRANT COUNTY, NAD 83 (2011) ADJ.	GRANT COUNTY COORDINATES	
	NORTH	611,882.39
CONTROL: MULTIPLE GPS OBSERVATIONS	EAST	838,757.09
	GEOGRAPHIC COORDINATES	
<i>THE NORTHWEST CORNER OF SECTION 17, TOWNSHIP 7 NORTH, RANGE 2 WEST, TOWN OF HICKORY GROVE, GRANT COUNTY, WISCONSIN.</i>	LONG.	90°38'10.32843"
	LAT.	43°05'23.82779"



SECTION 24
TOWNSHIP 7 NORTH, RANGE 2 WEST
TOWN OF HICKORY GROVE

(A) IDENTIFY THE CORNER BY REFERENCE TO THE U.S. PUBLIC LAND SURVEYSYSTEM

■ = CORNER MONUMENT RESTORED

WITNESS TO CORNER LOCATION:

*JEREMY F. KRACHEY
RON D. GRANGER*

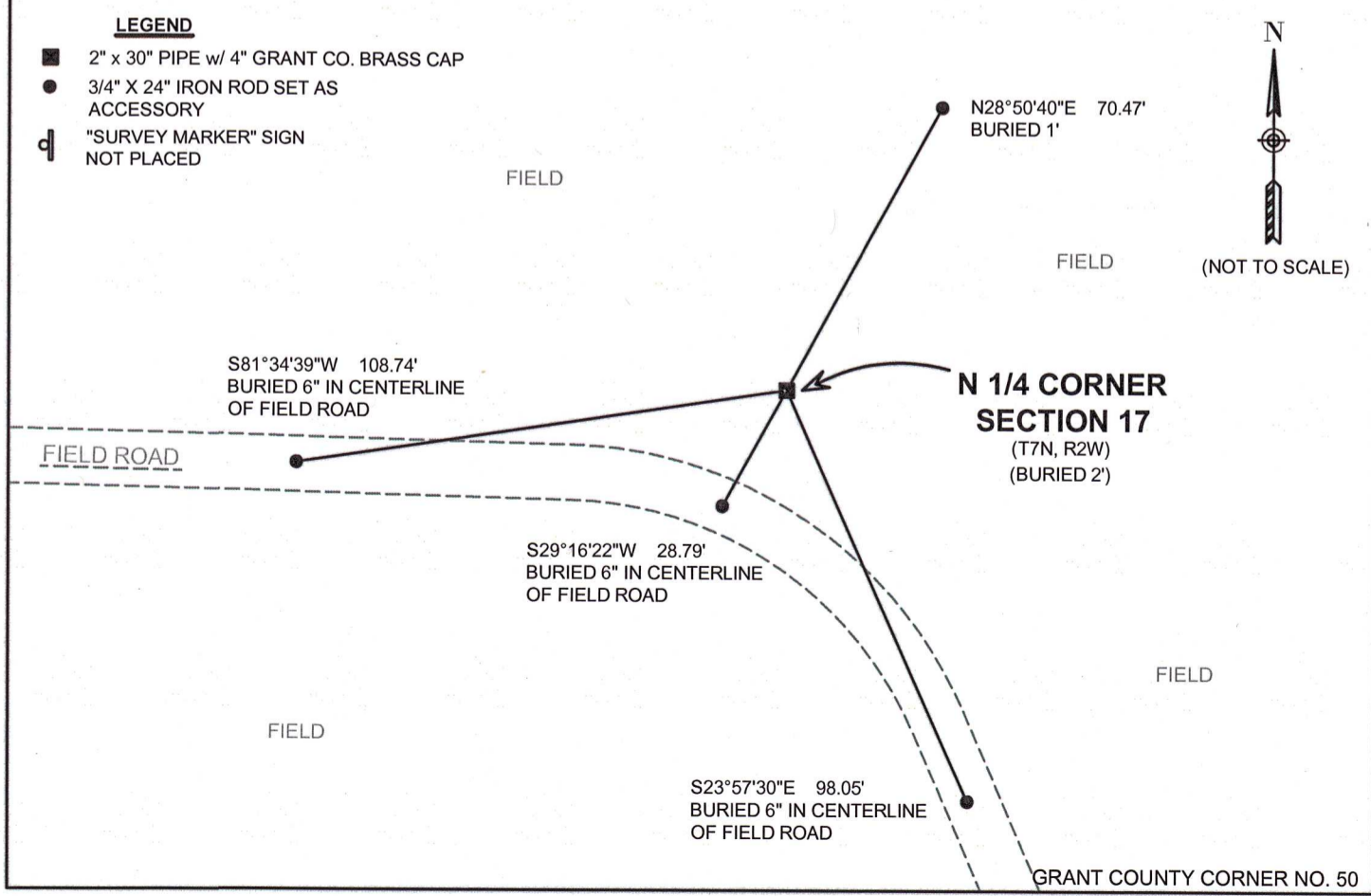
(B) DESCRIBE ANY RECORD EVIDENCE, MONUMENT EVIDENCE, OCCUPATIONAL EVIDENCE, TESTIMONIAL EVIDENCE OR ANY OTHER MATERIAL EVIDENCE YOU CONSIDERED, AND WHETHER THE MONUMENT WAS FOUND OR PLACED.

I COULD FIND NO MONUMENTS OR BEARING TREES FROM THE ORIGINAL GOVERNMENT SURVEY OR THE COUNTY SURVEYOR'S SUBSEQUENT RESURVEY. I HELD OCCUPATIONAL FENCE ALONG THE NORTH-SOUTH QUARTER AND OCCUPATIONAL FENCE ALONG THE NORTH LINE OF SECTION 17 TO ESTABLISH THE CORNER LOCATION. FURTHERMORE, I HAD A CONVERSATION WITH THE LAND OWNER, WHO INDICATED THAT THE CORNER ALIGNS WITH A SIZEABLE OAK TREE TO THE NORTH, A REFERENCE POINT HE HAS CONSISTENTLY RELIED ON. THIS LOCATION ALIGNS WITH TESTIMONIAL EVIDENCE AND OCCUPATIONAL EVIDENCE SO I SET A 2" x 30" PIPE WITH 4" GRANT CO. BRASS CAP AT THE CORNER.

(C) IN THE PLAN VIEW DRAWING BELOW, PROVIDE REFERENCE TIES TO AT LEAST 4 WITNESS MONUMENTS OR, IF THE LOCATION IS WITHIN A MUNICIPALITY, TO AT LEAST 2 WITNESS MONUMENTS. (WITNESS MONUMENTS SHALL BE MADE ON CONCRETE, NATURAL STONE, IRON, OR OTHER EQUALLY DURABLE MATERIAL.) DESCRIBE WITNESS MONUMENTS.

LEGEND

- 2" x 30" PIPE w/ 4" GRANT CO. BRASS CAP
- 3/4" X 24" IRON ROD SET AS ACCESSORY
- Ⓧ "SURVEY MARKER" SIGN NOT PLACED



(D) DESCRIBE ANY MATERIAL DISCREPANCY BETWEEN THE LOCATION OF THE CORNER AS RESTORED OR ESTABLISHED AND THE LOCATION OF THAT CORNER AS PREVIOUSLY RESTORED OR REESTABLISHED BY DISTANCE AND DIRECTION. SHOW THE DISCREPANCY ON THE PLAN VIEW DRAWING UNDER (C), ABOVE. SHOW THE DISTANCES BETWEEN THE CORNER AS PREVIOUSLY RESTORED OR REESTABLISHED AND (1) THE CORNER AS RESTORED OR REESTABLISHED, AND (2) TO AT LEAST 2 OF THE WITNESS MONUMENTS AS SHOWN ON THE DRAWING IN (C), ABOVE.

N/A

(E) WAS THE CORNER RESTORED THROUGH ACCEPTANCE OF (1) AN OBLITERATED EVIDENCE LOCATION, OR (2) A FOUND PERPETUATED LOCATION?

(1) AN OBLITERATED EVIDENCE LOCATION

(F & G) WAS THE CORNER REESTABLISHED THROUGH LOST CORNER PROPORTIONATE METHODS? IF SO SHOW THE METHOD, INCLUDING THE DIRECTION AND DISTANCED TO OTHER PUBLIC LAND SURVEY CORNERS USED AS EVIDENCE OR USED FOR PROPORTIONING IN DETERMINING THE CORNER LOCATION.

N/A

CORNER HISTORY:

ORIGINAL GOVERNMENT CORNER ESTABLISHED BY HARVEY PARKE IN THE FIRST QUARTER OF 1833.

JOSEPH ALLEN PERFORMED A SURVEY DATED NOVEMBER 26, 1869 AND FOUND THE ORIGINAL GOVERNMENT CORNER.

AFFIX LAND SURVEYOR SEAL

(H) I, STEVEN A. ALT, P.L.S 3061 CERTIFY THAT THE CORNER LOCATION SHOWN ON THIS RECORD WAS DETERMINED BY ME OR UNDER MY DIRECTION AND CONTROL AND THAT THIS U.S. PUBLIC LAND SURVEY MONUMENT RECORD IS CORRECT AND COMPLETE TO THE BEST OF MY KNOWLEDGE AND BELIEF.

SIGNATURE

11-20-2023

DATE

