

GRANT COUNTY CERTIFIED LAND CORNER

CORNER NUMBER 28

CERTIFICATE:

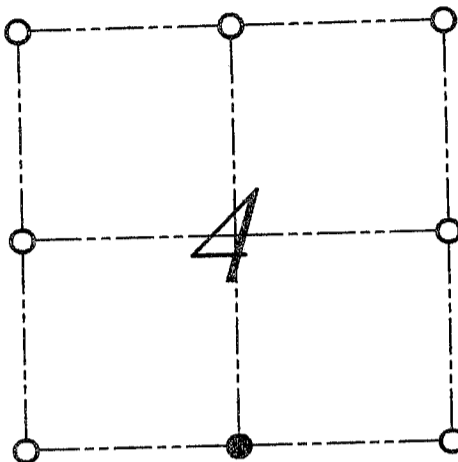
I, LARRY L. AUSTIN, DO HEREBY CERTIFY THAT ON 11th DAY OF NOVEMBER, 1999, I FOUND EVIDENCE OF THE SOUTH 1/4 CORNER OF SECTION 4, TOWN 7 NORTH, RANGE 2 WEST, OF THE FOURTH PRINCIPAL MERIDIAN, AND I RE-ESTABLISHED SAID CORNER ACCORDING TO THE WISCONSIN STATUTES AS SHOWN AND DESCRIBED HEREON.

DATED THIS 29th DAY OF NOVEMBER, 1999

Larry L. Austin
LARRY L. AUSTIN S-1903



SEAL



● = CORNER LOCATION

SOUTH 1/4 CORNER OF SECTION 4, T 7 N R 2 W TOWN OF HICKORY GROVE

HISTORY OF ORIGINAL CORNER ESTABLISHMENT:

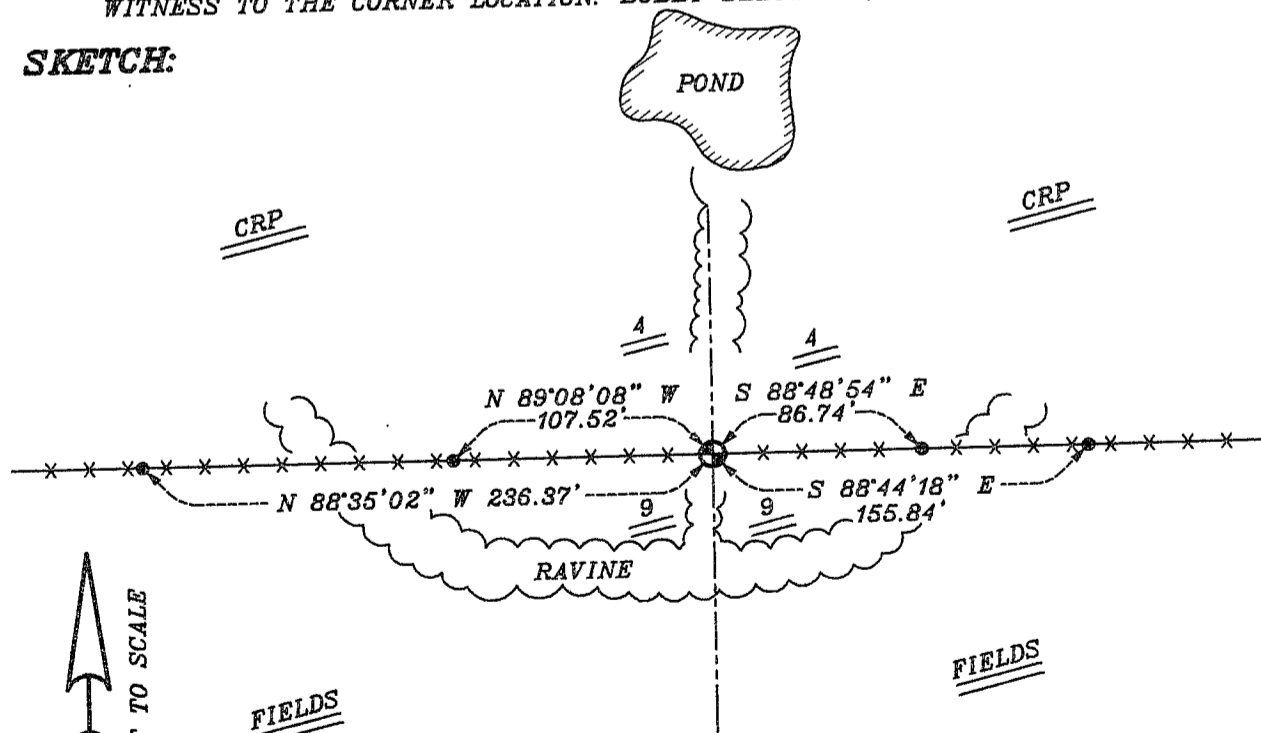
CORNER WAS SET IN 1833 BY HARVEY PARKE.
NO OTHER RECORD OF THE CORNER WAS FOUND.

DESCRIPTION OF CORNER EVIDENCE FOUND:

I FOUND AN EXISTING EAST-WEST FENCE FOR NORTHING. EASTING WAS ESTABLISHED BY PROPORTIONING BETWEEN THE SOUTHWEST AND SOUTHEAST CORNERS. VERIFIED THIS LOCATION USING E.D.M. AND G.P.S. METHODS.

DESCRIPTION OF CORNER AND WITNESS MONUMENTS, REFERENCES AND ACCESSORIES USED TO PERPETUATE THE ORIGINAL OR RE-ESTABLISHED LOCATION OF THIS CORNER:
WITNESS TO THE CORNER LOCATION: BOBBY SEDGWICK ; SHELBY BLINDERT

SKETCH:



LEGEND

- NUMBER 8 X 30" REBAR SET WITH GRANT COUNTY ALUMINUM CAP
- NUMBER 4 X 24" REBAR SET WITH RED PLASTIC CAP
- xx EXISTING FENCE LOCATION