

GRANT COUNTY CERTIFIED LAND CORNER

CERTIFICATE:

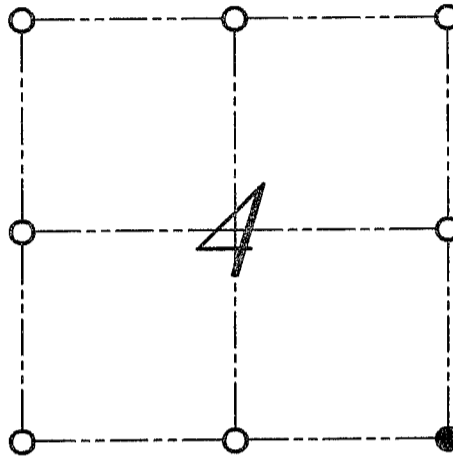
I, LARRY L. AUSTIN, DO HEREBY CERTIFY THAT ON 11th DAY OF NOVEMBER, 1999, I FOUND EVIDENCE OF THE SOUTHEAST CORNER OF SECTION 4, TOWN 7 NORTH, RANGE 2 WEST, OF THE FOURTH PRINCIPAL MERIDIAN, AND I RE-ESTABLISHED SAID CORNER ACCORDING TO THE WISCONSIN STATUTES AS SHOWN AND DESCRIBED HEREON.

DATED THIS 29th DAY OF NOVEMBER, 1999

Larry L. Austin
LARRY L. AUSTIN S-1903



CORNER NUMBER 27



● = CORNER LOCATION

SOUTHEAST CORNER OF
SECTION 4, T 7 N R 2 W
TOWN OF HICKORY GROVE

HISTORY OF ORIGINAL CORNER ESTABLISHMENT:

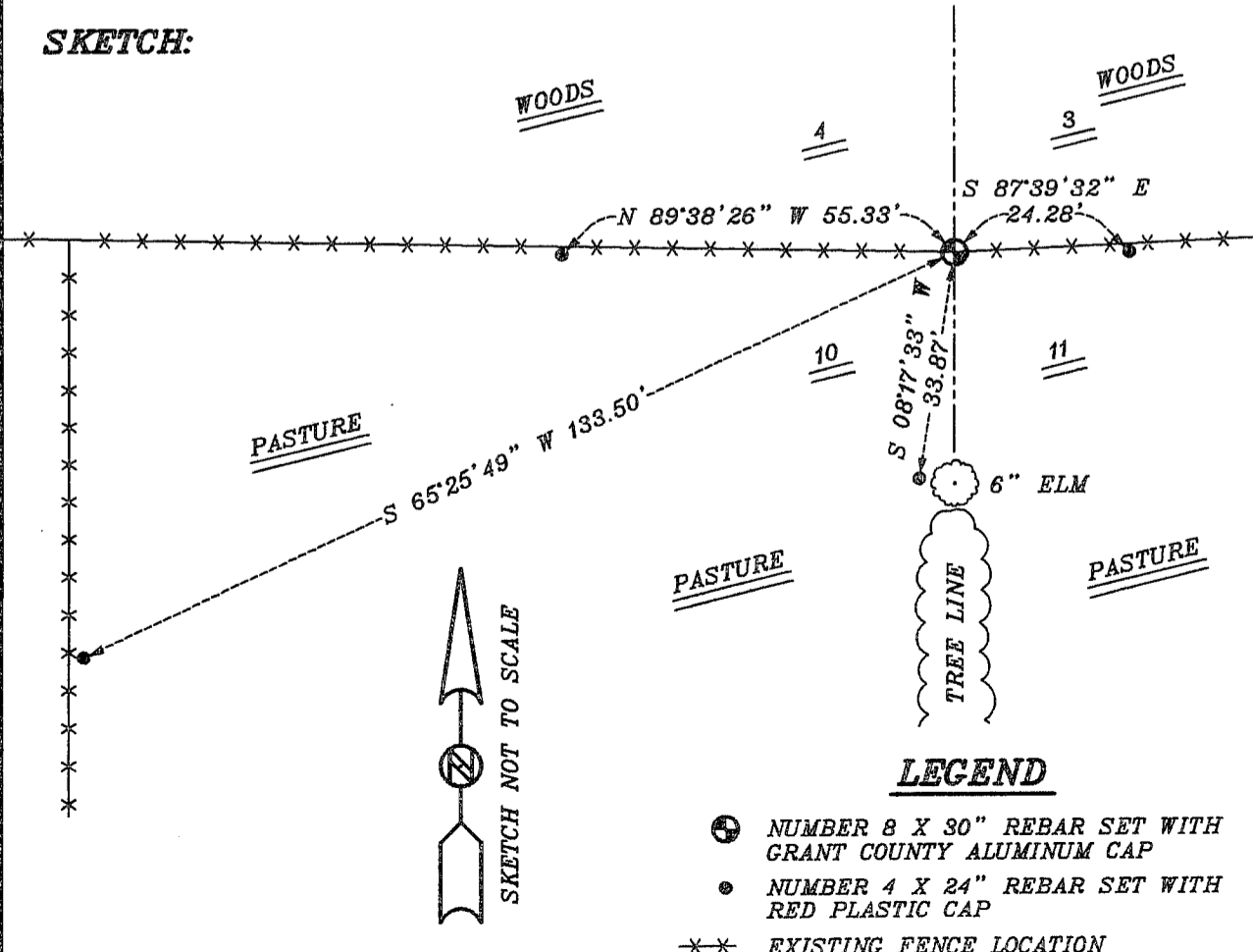
CORNER WAS SET IN 1833 BY HARVEY PARKE.
NO OTHER RECORD OF THE CORNER WAS FOUND.

DESCRIPTION OF CORNER EVIDENCE FOUND:

I FOUND AN OCCUPIED LOCATION ON AN EAST-WEST FENCE & A TREELINE SOUTH. (TREES WITH EVIDENCE OF WIRE) VERIFIED THIS LOCATION USING E.D.M. AND G.P.S. METHODS EAST AND WEST OF THE CORNER.

DESCRIPTION OF CORNER AND WITNESS MONUMENTS, REFERENCES AND ACCESSORIES USED TO PERPETUATE THE ORIGINAL OR RE-ESTABLISHED LOCATION OF THIS CORNER:
WITNESS TO THE CORNER LOCATION: BOBBY SEDGWICK ; SHELBY BLINDERT

SKETCH:



LEGEND

- NUMBER 8 X 30" REBAR SET WITH GRANT COUNTY ALUMINUM CAP
- NUMBER 4 X 24" REBAR SET WITH RED PLASTIC CAP
- **-** EXISTING FENCE LOCATION