

U.S. PUBLIC LAND SURVEY MONUMENT RECORD

(As Required By s. A-E 7.08, WI Adm. Code)

History of original corner establishment and subsequent restorations and description of any record, monument, occupational, testimonial or other evidence considered: *A 3/4" Iron Rod set by Douglas Mallett in a survey dated 7/28/1987 and shown in subsequent surveys by himself and Larry Austin was not accepted as the corner. No physical evidence except a fence line near the corner was found. The corner was restored on a line between the NW & NE corners at the intersection with this fence.*

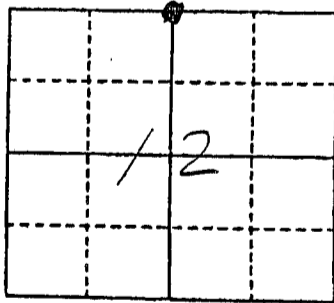
Corner was: (Check All That Apply) *N 89°03'58" E* *N 89°03'58" E*
FD. 2651.11' 1" IRON PIPE *2633.33'* *FD. 2" IRON PIPE*
SET 1" x 30" IRON ROD w/ ALUM. CAP

- Restored through acceptance of an obliterated evidence location
- Restored through acceptance of a found perpetuated location
- Considered a lost corner and reestablished through lost corner proportionate methods (include a plan view drawing showing distances and directions to other Public Land Survey Corners used for proportioning and determining the corner location)
- Restored or reestablished in a location that differs from a previous restoration or reestablishment (include a plan view drawing and indicate what was set and/or found)

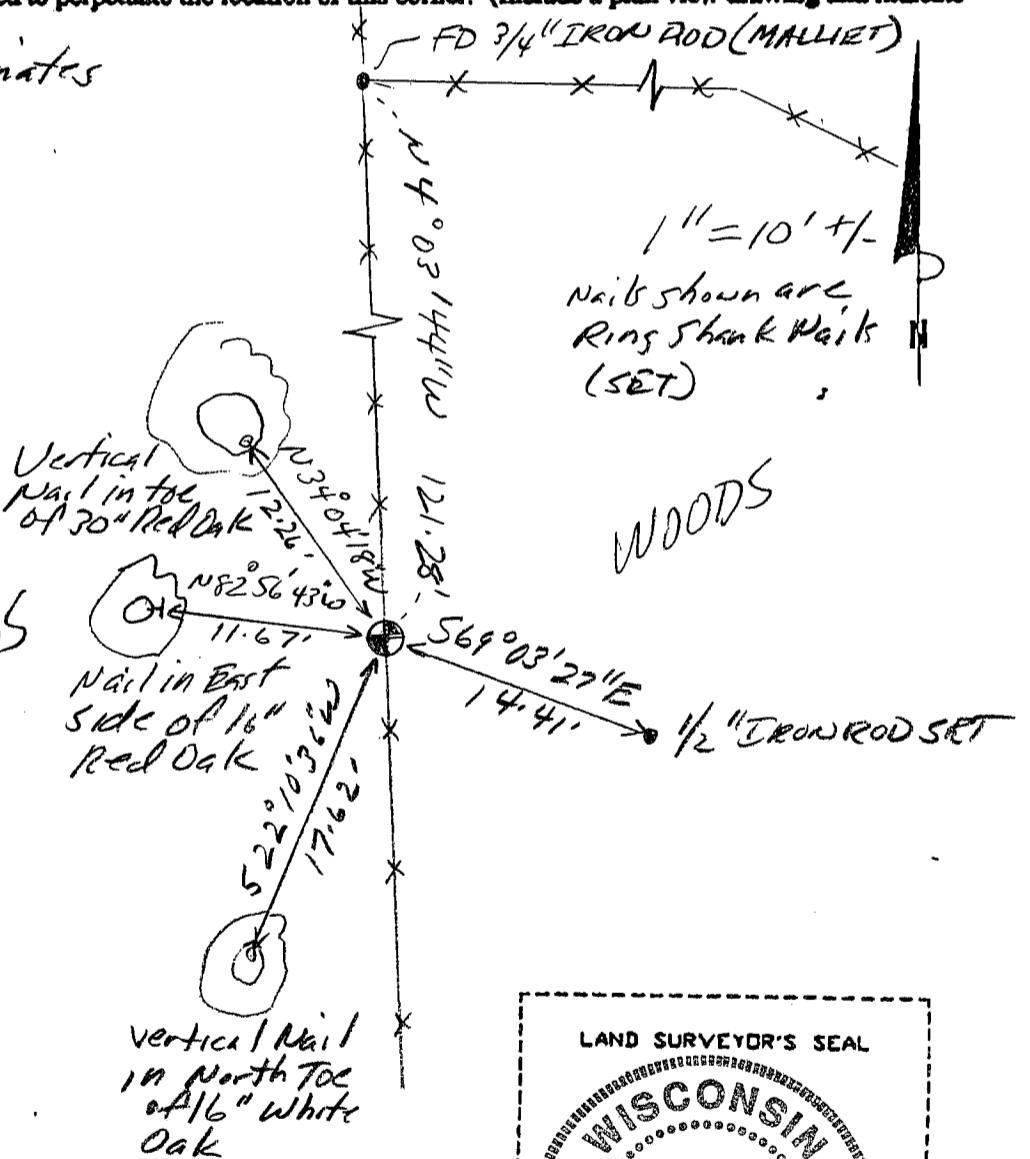
Describe the monument and accessories used to perpetuate the location of this corner. (Include a plan view drawing and indicate what was set and/or found)

Grant County Coordinates
(N) 617025.25
(E) 859858.97

The *N 1/4*
 corner of Section *12*
 T. *7* N., R. *2* W.
Grant County, Wisconsin
 Job ID: *2003-6*
 Book # *6*



● = Location of Corner



Michael R. LaRosa

Type or print name) certify that the corner location shown on this report was determined by me or under my direction and control and that this U.S. Public Land Survey Monument Record is correct and complete to the best of my knowledge and belief.

Michael R. LaRosa 4/21/2003
 Signature Date



Index No. *22*

MAY 23 2003