

**U.S. PUBLIC LAND SURVEY MONUMENT RECORD**

(As Required By s. A-E 7.08, WI Adm. Code)

History of original corner establishment and subsequent restorations and description of any record, monument, occupational, testimonial or other evidence considered:

A 2" Iron Pipe as set in a survey by Douglas Mallett dated 7/28/1987 and also noted in a revised survey, dated 12/29/87 and in surveys by Larry Austin (4/7/1999 & 8/19/1999) was found at the corner.

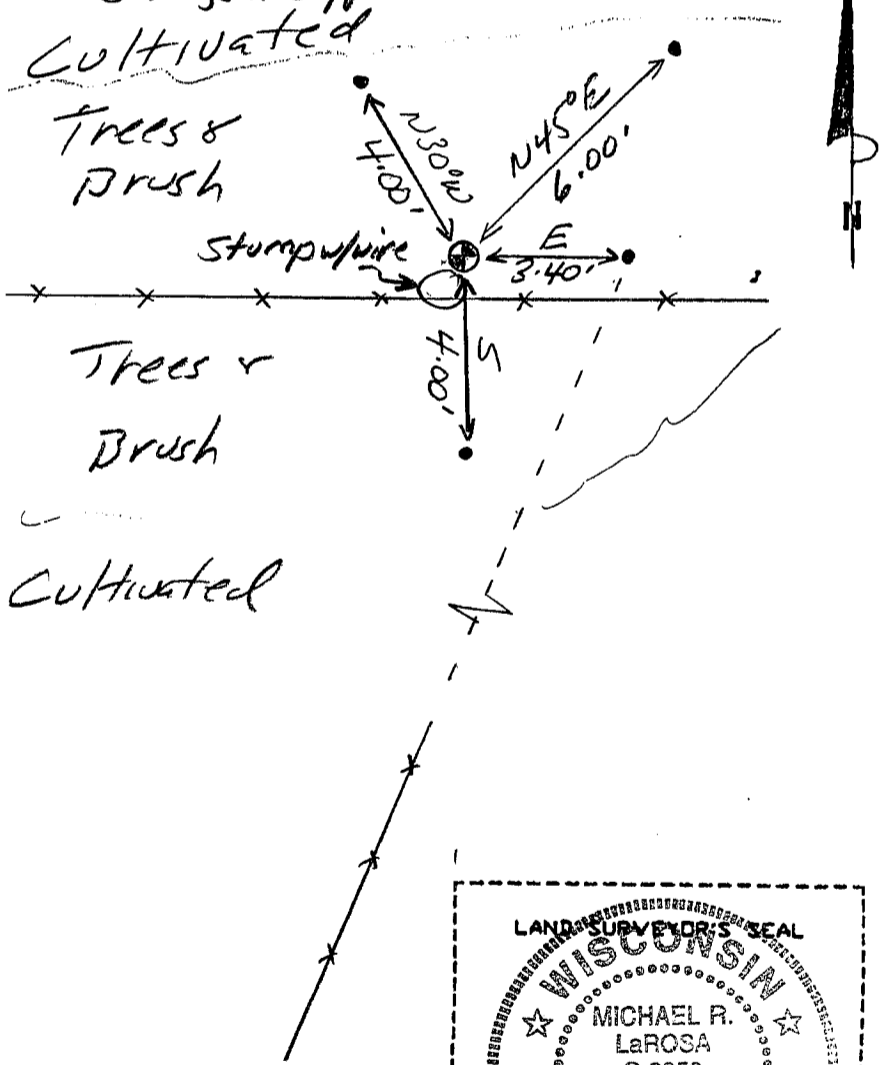
Corner was: (Check All That Apply)

- Restored through acceptance of an obliterated evidence location
- Restored through acceptance of a found perpetuated location
- Considered a lost corner and reestablished through lost corner proportionate methods (include a plan view drawing showing distances and directions to other Public Land Survey Corners used for proportioning and determining the corner location)
- Restored or reestablished in a location that differs from a previous restoration or reestablishment (include a plan view drawing and indicate what was set and /or found)

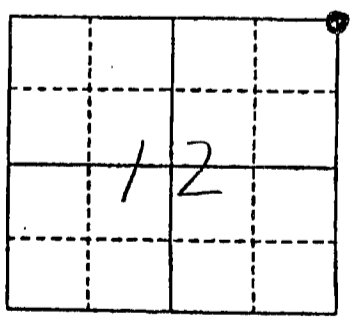
Describe the monument and accessories used to perpetuate the location of this corner. (Include a plan view drawing and indicate what was set and/or found)

Grant County  
Coordinates  
(W) 617068.18  
(E) 862491.95

• Pole Barn Spike Set  
Fence  
NOTE: Bearings are approximate



The NE  
corner of Section 12  
T. 7 N., R. 2 W.  
Grant County, Wisconsin  
Job ID: 2003-6  
Book # L.L.



● = Location of Corner

Michael R. LaRosa  
Type or print name) certify that the corner location shown on this record was determined by me or under my direction and control and that this U.S. Public Land Survey Monument Record is correct and complete to the best of my knowledge and belief.  
Michael R. LaRosa 4/21/2003  
Signature Date



Index No. 21