

# GRANT COUNTY CERTIFIED LAND CORNER

CORNER NO. 18

**CERTIFICATE:**

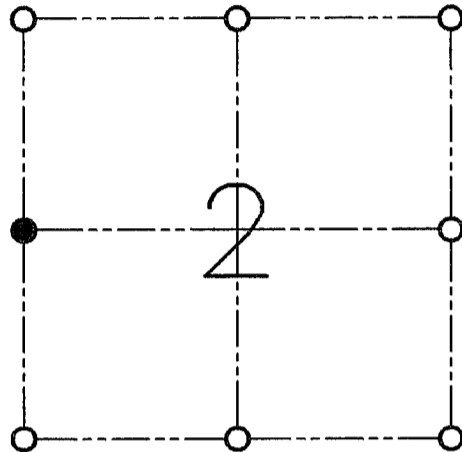
I, LARRY L. AUSTIN, DO HEREBY CERTIFY THAT ON FIFTEENTH DAY OF MARCH, 1999, I FOUND ~~NO~~ EVIDENCE OF THE WEST 1/4 CORNER OF SECTION 2, TOWN 7 NORTH, RANGE 2 WEST, OF THE FOURTH PRINCIPAL MERIDIAN, AND I RE-ESTABLISHED SAID CORNER ACCORDING TO THE WISCONSIN STATUTES AS SHOWN AND DESCRIBED HEREON.

DATED THIS TWENTY-FIFTH DAY OF MARCH, 1999

*Larry L. Austin*  
LARRY L. AUSTIN S-1903



SEAL



● = CORNER LOCATION

**WEST 1/4 OF SECTION 2  
T 7 N R 2 W  
TOWN OF HICKORY GROVE**

**HISTORY OF ORIGINAL CORNER ESTABLISHMENT:**

CORNER WAS SET IN 1832 BY HARVEY PARKE. RICHARD MARKS SET THE CORNER IN 1991.

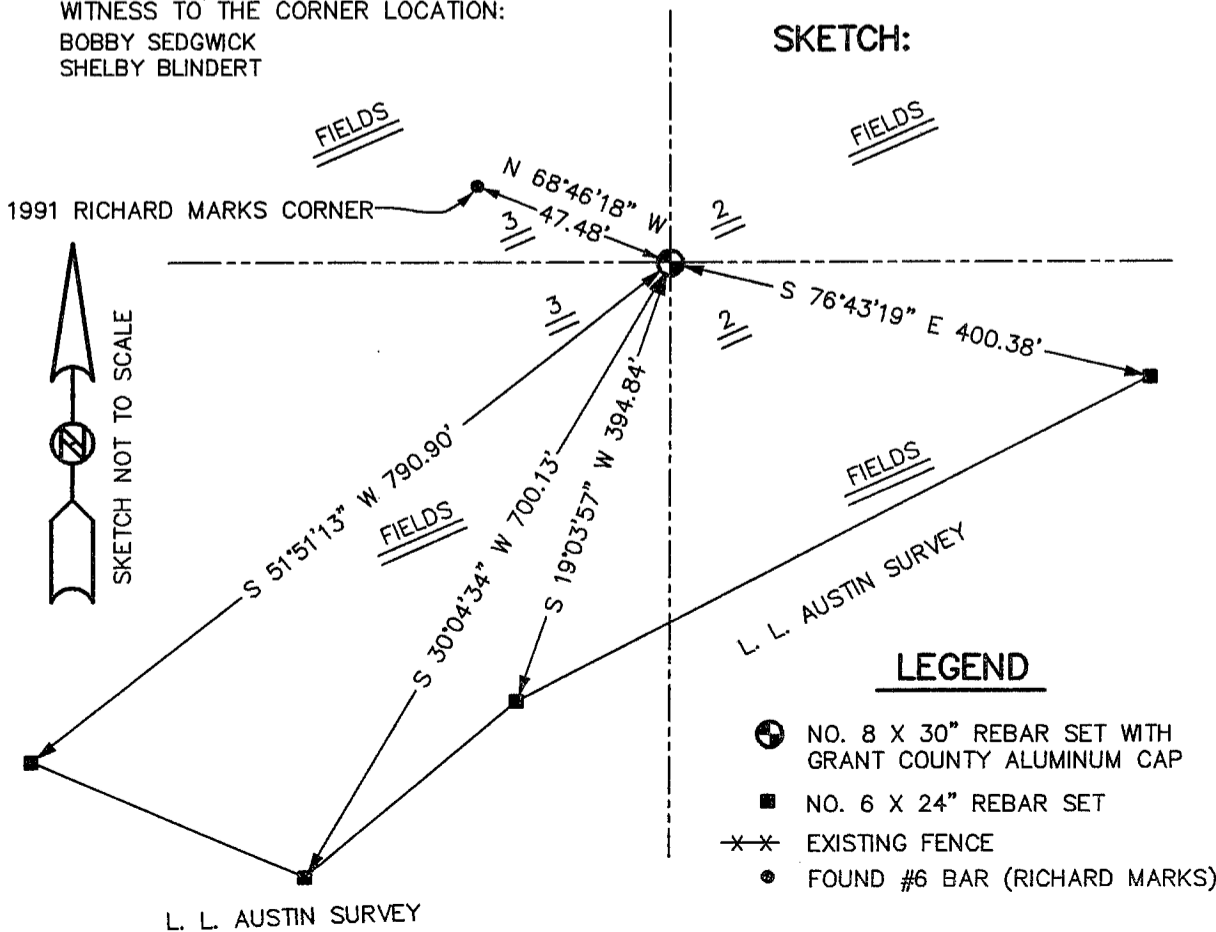
**DESCRIPTION OF CORNER EVIDENCE FOUND:**

I FOUND THE MARK'S THE CORNER TO BE INCORRECT AND I SET THE CORNER AT A SINGLE PROPORTION NORTH-SOUTH. VERIFIED THIS LOCATION USING E.D.M. AND G.P.S. METHODS.

**DESCRIPTION OF CORNER AND WITNESS MONUMENTS, REFERENCES AND ACCESSORIES USED TO PERPETUATE THE ORIGINAL OR RE-ESTABLISHED LOCATION OF THIS CORNER:**

WITNESS TO THE CORNER LOCATION:  
BOBBY SEDGWICK  
SHELBY BLINDERT

**SKETCH:**



**LEGEND**

- NO. 8 X 30" REBAR SET WITH GRANT COUNTY ALUMINUM CAP
- NO. 6 X 24" REBAR SET
- EXISTING FENCE
- FOUND #6 BAR (RICHARD MARKS)

# U.S. PUBLIC LAND SURVEY MONUMENT RECORD

Note: This form is intended and designed to fulfill all requirements of Wisconsin Administrative Code, Chapter A-E 5.02, U.S. Public Land Survey Monument Record (3) (a) (b) (c) (d) (e) (f) (g) (h) (i). An additional sheet may be added if necessary to conform with said requirements.

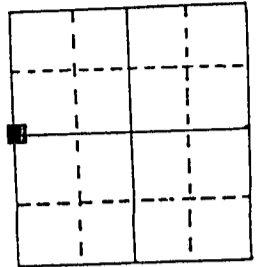
(a) Corner location: Township 7 North

Range 5 East/West

Town/City/Village Hickory Grove

DEC 30 1991

County Grant

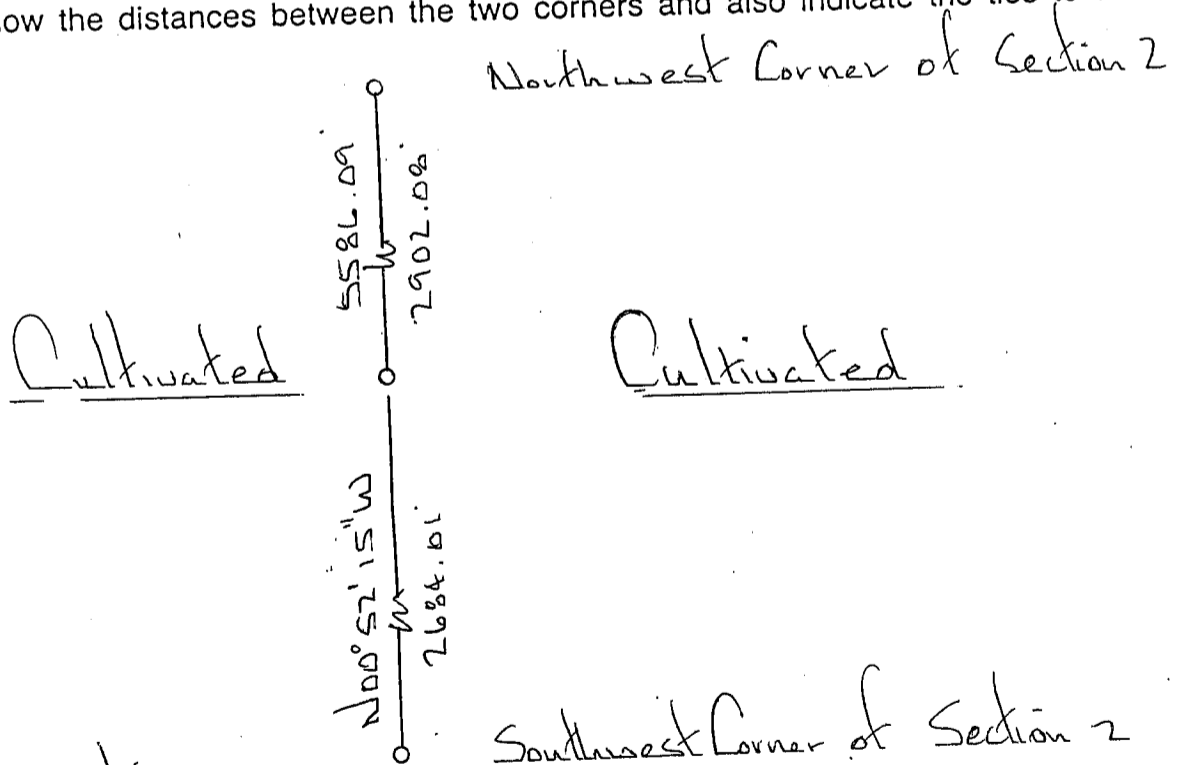


Section 2

(b) (f) (g) (h) Description of monument found at this corner and if it was accepted, state all evidence (material, testimonial, occupational, plats, records, other monuments) used as a basis for accepting. If not accepted or if nothing was found, state evidence used as basis for establishing location. If reestablished through lost corner proportionate methods, indicate all monuments, distances and directions used to establish.

*Set Corner By Proportionate Measurement Between The Northwest Corner (Set From Original B.T. And The Southwest Corner (Found 1-1/4" Iron Pipe. Corner Falls In Cultivated Field. Did Not Set Ties. Set A 3/4" x 24" Solid Round Iron Rod 20" Under Surface At Corner.*

(c) (d) (e) Plan view of corner with ties to at least 4 witness monuments. If in disagreement with previously established corner, show the distances between the two corners and also indicate the ties to the disputed corner.



(i) I, Richard Marks  
 (type or print name) certify that the corner location on this record was determined by me or under my direction and control and that this U.S. Public Land Survey Monument Record is correct and complete to the best of my knowledge and belief.

Richard Marks  
 Signature

12/24/91  
 Date

