

72015.5

U.S. PUBLIC LAND SURVEY MONUMENT RECORD - GRANT COUNTY, WI

Section 5, Town 7 North Range 2 West, Town of Hickory Grove (a)

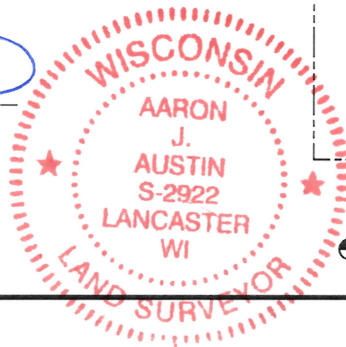
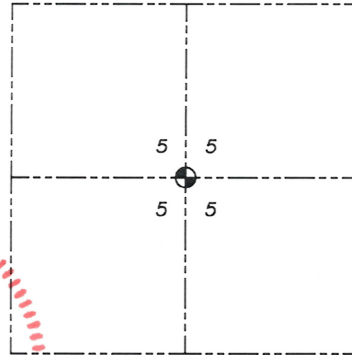
NOTE: This form is intended and designed to fulfill all requirements of the Wisconsin Administrative Code Chapter A-E 7.08, U.S. Public Land Survey Monument Record (3) (a) (b) (c) (d) (e) (f) (g) (h) (i).

CERTIFICATE: (i)

I, Aaron J. Austin, Wisconsin Professional Land Surveyor, do hereby certify that the corner location on this record was determined by me and/or under my direct supervision and that this U.S. Public Land Survey Monument Record is correct and complete to the best of my knowledge and belief.

Dated this 4th day of March, 2025.

Aaron J. Austin
Aaron J. Austin, PLS-2922



● = CORNER LOCATION

Grant County Coordinates:
NAD 83 (2011)
Northing: 619,799.56
Easting: 838,636.72

HISTORY OF CORNER ESTABLISHMENT:

Corner was not set with the Original Government Survey.
Aaron Austin set a 3/4" Rebar on a Survey filed in Book 30, Page 74 dated 12-19-2011.

DESCRIPTION OF CORNER EVIDENCE FOUND: (b) (f) (g) (h)

I found the 3/4" Rebar I set. I set four witness corners after I verified the Monument's location with G.P.S. and E.D.M. methods.

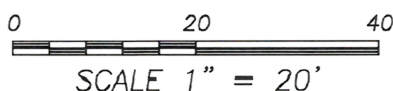
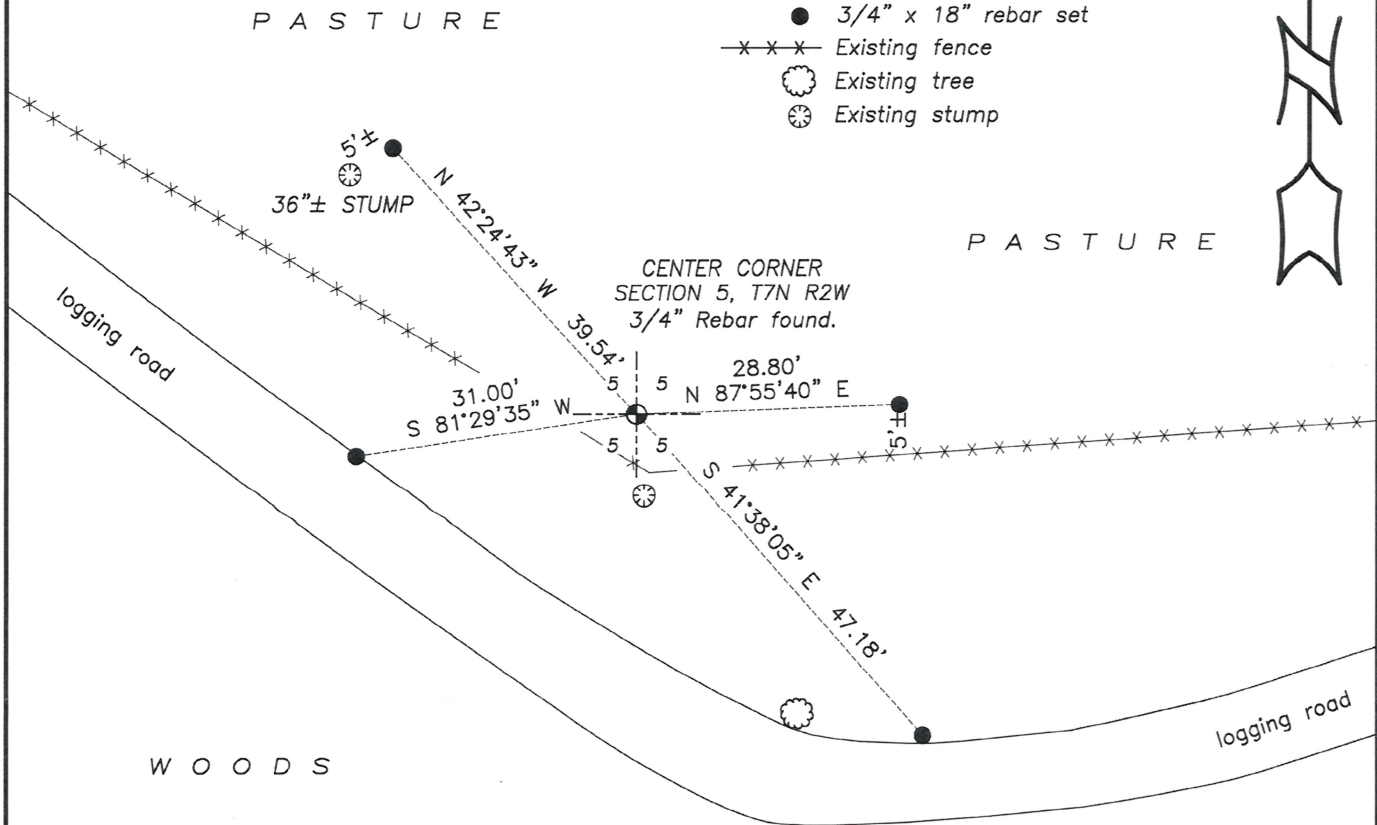
DESCRIPTION OF CORNER AND WITNESS MONUMENTS, references and accessories used to perpetuate the original or re-established location of this corner. (c) (d) (e)

Witnesses to corner location Owen Austin.
Drawn by: Owen Austin.

SKETCH:

LEGEND

- Section Corner—as designated
- 3/4" x 18" rebar set
- x - x - Existing fence
- ⊗ Existing tree
- ⊗ Existing stump



Job#25S002
H:\GRD\25S002
H:\TIE\T7NR2W\15.5