

# GRANT COUNTY CERTIFIED LAND CORNER

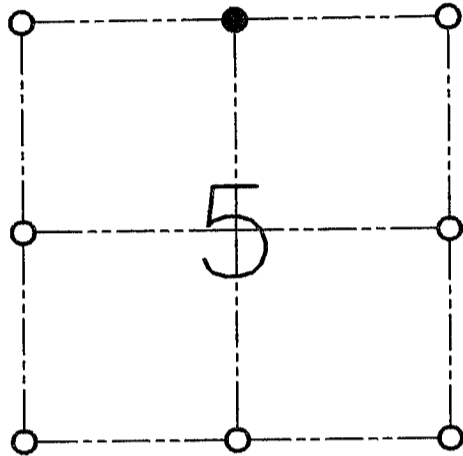
CORNER NO. 10

**CERTIFICATE:**

I, LARRY L. AUSTIN, DO HEREBY CERTIFY THAT ON FIFTEENTH DAY OF MARCH, 1999, I FOUND OCCUPATIONAL EVIDENCE OF THE NORTH 1/4 CORNER SECTION 5, TOWN 7 NORTH, RANGE 2 WEST, OF THE FOURTH PRINCIPAL MERIDIAN, AND I RE-ESTABLISHED SAID CORNER ACCORDING TO THE WISCONSIN STATUTES AS SHOWN AND DESCRIBED HEREON.

DATED THIS TWENTY-SIXTH DAY OF MARCH, 1999

*Larry L. Austin*  
LARRY L. AUSTIN S-1903



● = CORNER LOCATION

**NORTH 1/4 CORNER OF  
SECTION 5, T 7 N R 2 W  
TOWN OF HICKORY GROVE**

**HISTORY OF ORIGINAL CORNER ESTABLISHMENT:**

CORNER WAS NEVER ORIGINALLY SET.

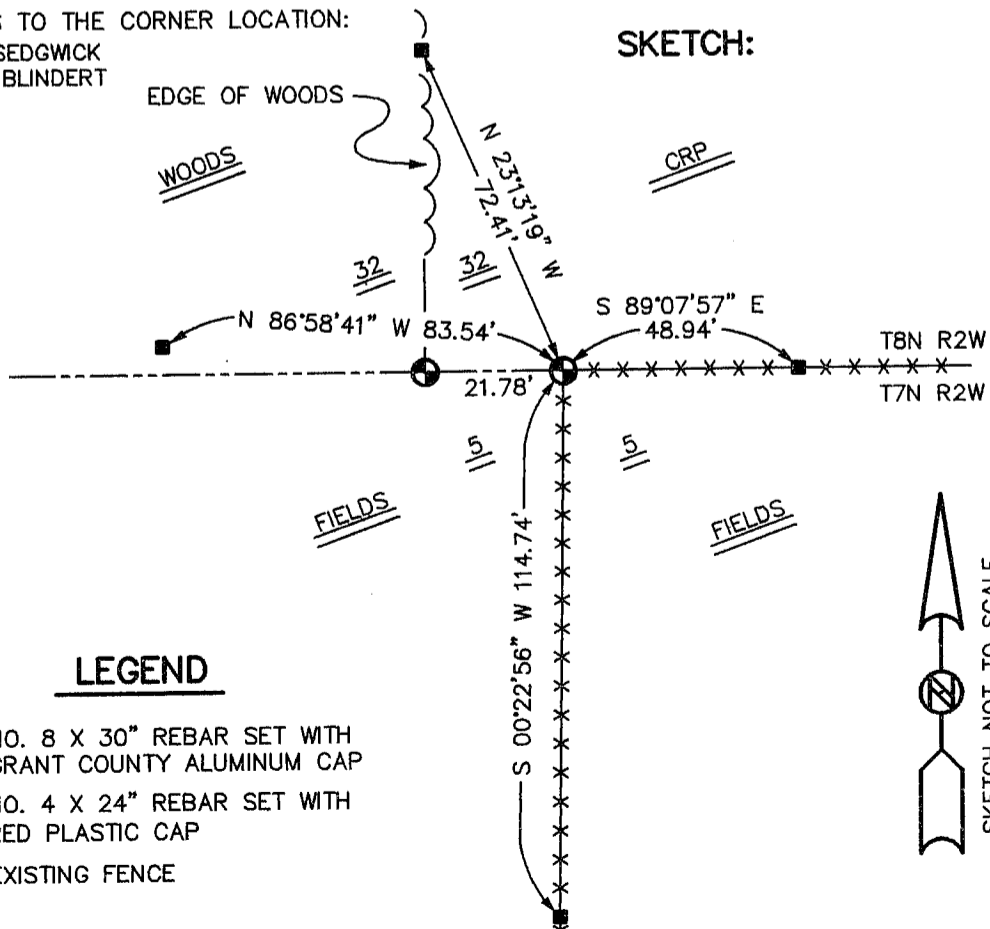
**DESCRIPTION OF CORNER EVIDENCE FOUND:**

I SET THE CORNER AT AN OCCUPIED FENCE CORNER.  
VERIFIED THIS LOCATION USING E.D.M. AND G.P.S. METHODS.

**DESCRIPTION OF CORNER AND WITNESS MONUMENTS, REFERENCES AND ACCESSORIES USED TO PERPETUATE THE ORIGINAL OR RE-ESTABLISHED LOCATION OF THIS CORNER:**

WITNESS TO THE CORNER LOCATION:  
BOBBY SEDGWICK  
SHELBY BLINDERT

**SKETCH:**



**LEGEND**

- NO. 8 X 30" REBAR SET WITH GRANT COUNTY ALUMINUM CAP
- NO. 4 X 24" REBAR SET WITH RED PLASTIC CAP
- x-x- EXISTING FENCE