

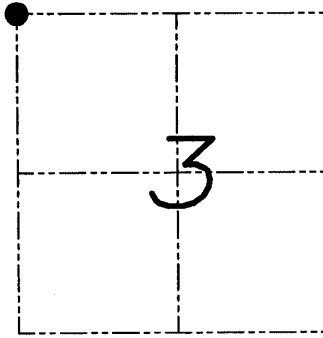
U.S. PUBLIC LAND SURVEY MONUMENT RECORD

Section 3, Town 7 North Range 2 West, Town of Hickory Grove, Grant County, Wisconsin

CERTIFICATE

I, Larry L. Austin, do hereby certify that the corner location on this record was determined by me and/or under my direct supervision and that this U.S. public land survey monument record is correct and complete to the best of my knowledge and belief.

Larry L. Austin
 Larry L. Austin, 6-19-08
 Lancaster, WI date



● = CORNER LOCATION

HISTORY OF CORNER

Corner was originally set in 1833 by Parke.
 No recent record of the corner was found.

CORNER EVIDENCE FOUND

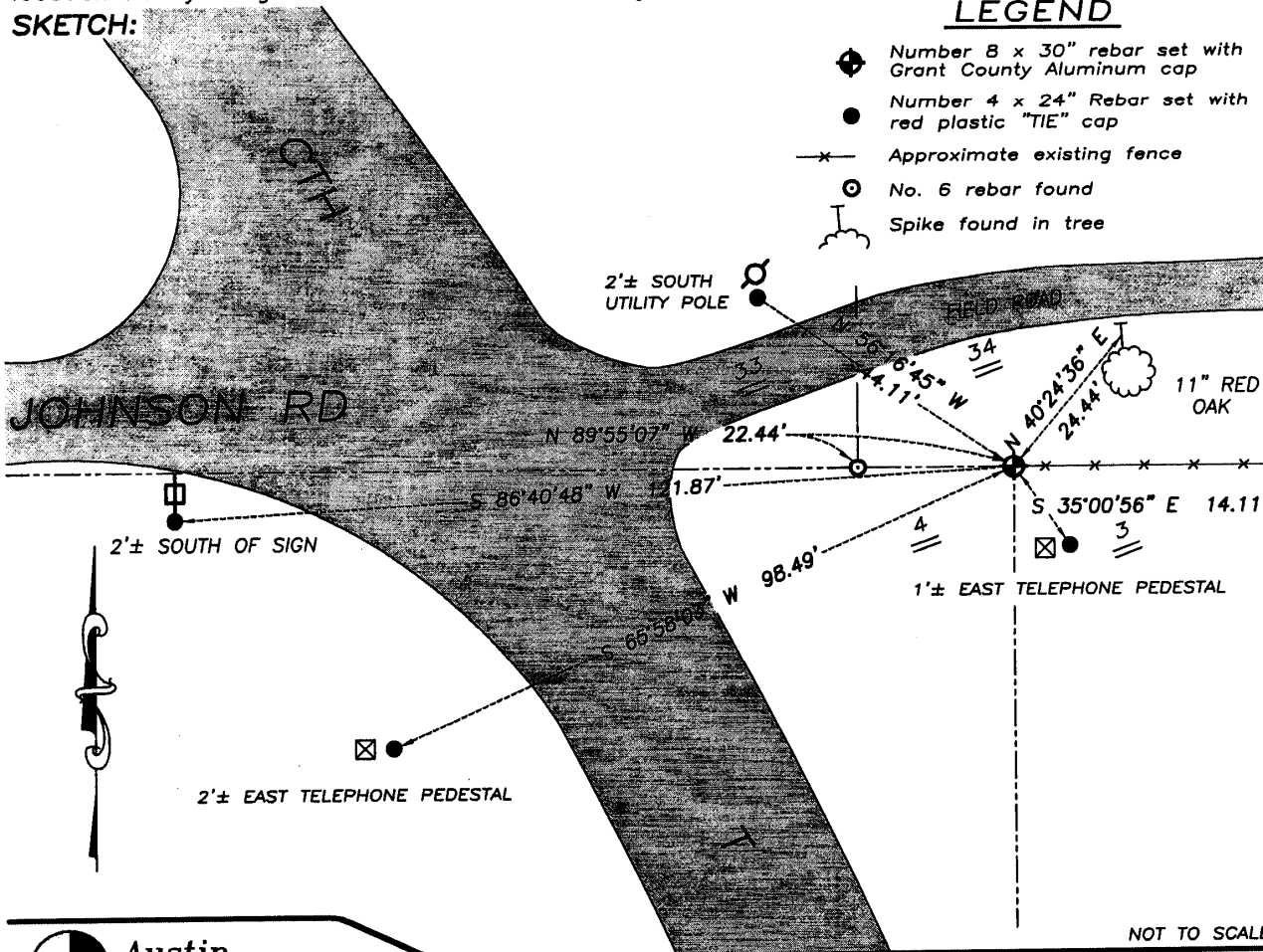
I reset the corner at the recorded offset from the Southwest corner of Section 34, T8N R2W. Verified this location using EDM & GPS methods.

DESCRIPTION OF CORNER AND WITNESS MONUMENTS, references and accessories used to perpetuate the original or re-established location of this corner. Witnesses to monument location Bobby Sedgwick & Brad Hazen & Shelby Blindert

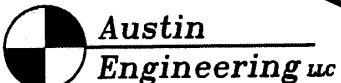
SKETCH:

LEGEND

- ◆ Number 8 x 30" rebar set with Grant County Aluminum cap
- Number 4 x 24" Rebar set with red plastic "TIE" cap
- x- Approximate existing fence
- ⊙ No. 6 rebar found
- ⌋ Spike found in tree



NOT TO SCALE



4211 HWY 81 E, LANCASTER, WI 53813
 PHONE 608-723-6363 FAX 608-723-6702

JOB NUMBER 07S368
 FIELDBOOK: TDSR, 2800
 G:\T8NR2W\27
 H:\TIE\T7NR2W\07

DRAWN BY: SW AUSTIN
 APPROVED: LL AUSTIN

07