

# GRANT COUNTY CERTIFIED LAND CORNER

CORNER NO. 06

**CERTIFICATE:**

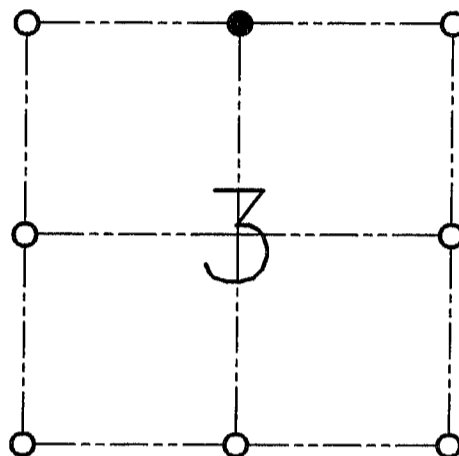
I, LARRY L. AUSTIN, DO HEREBY CERTIFY THAT ON FIFTEENTH DAY OF MARCH, 1999, I FOUND NO EVIDENCE OF THE NORTH 1/4 CORNER OF SECTION 3, TOWN 7 NORTH, RANGE 4 WEST, OF THE FOURTH PRINCIPAL MERIDIAN, AND I RE-ESTABLISHED SAID CORNER ACCORDING TO THE WISCONSIN STATUTES AS SHOWN AND DESCRIBED HEREON.

DATED THIS TWENTY-SIXTH DAY OF MARCH, 1999

*Larry L. Austin*  
LARRY L. AUSTIN S-1903



SEAL



● = CORNER LOCATION

**NORTH 1/4 CORNER OF  
SECTION 3, T 7 N R 2 W  
TOWN OF HICKORY GROVE**

**HISTORY OF ORIGINAL CORNER ESTABLISHMENT:**

CORNER WAS NEVER ORIGINALLY SET.

**DESCRIPTION OF CORNER EVIDENCE FOUND:**

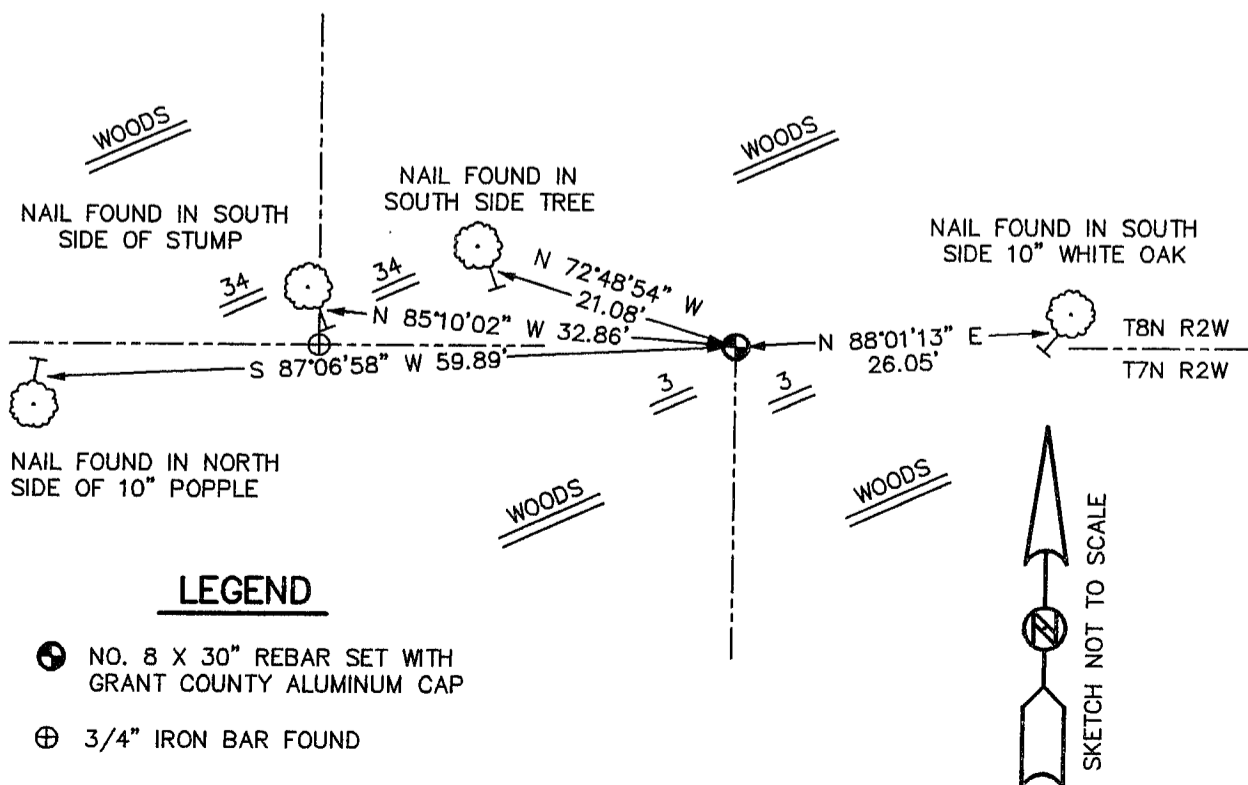
I SET THE CORNER AT THE PROPORTIONED OFFSET AND ONLINE BETWEEN THE SOUTH 1/4 AND SOUTHEAST CORNER OF SECTION 34, T8N R2W. VERIFIED THIS LOCATION USING E.D.M. AND G.P.S. METHODS.

**DESCRIPTION OF CORNER AND WITNESS MONUMENTS, REFERENCES AND ACCESSORIES USED TO PERPETUATE THE ORIGINAL OR RE-ESTABLISHED LOCATION OF THIS CORNER:**

**WITNESS TO THE CORNER LOCATION:**

BOBBY SEDGWICK  
SHELBY BLINDERT

**SKETCH:**



**LEGEND**

- NO. 8 X 30" REBAR SET WITH GRANT COUNTY ALUMINUM CAP
- ⊕ 3/4" IRON BAR FOUND

