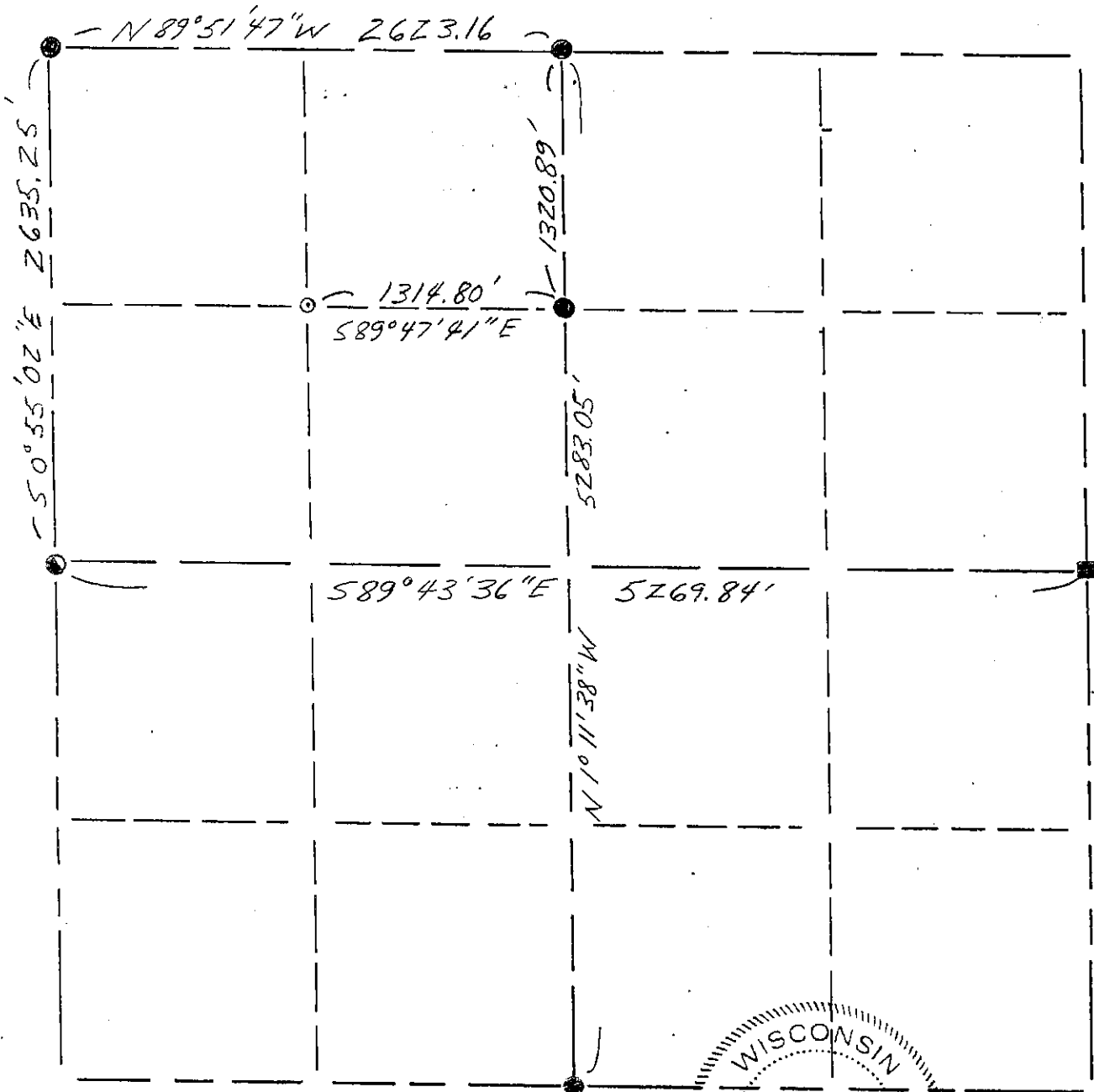


GRANT COUNTY

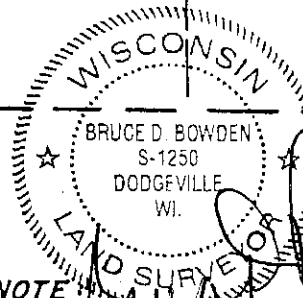
Section Summary

32 - 7N - 1W
SECTION TOWN RANGE



LEGEND

- △ COUNTY MONUMENT
- STONE OR CONCRETE MONUMENT - found
- OTHER (specify) No. 8 rebar - found
- 1/2" dia. iron pipe - found
- No. 6 x 24" rebar - set



NOTE: Relationships of all section corners to other section corners shall be shown hereon by bearing and distance or grid coordinates

Show or describe bearing reference

Bearings are referenced to the North line of the Northwest Quarter of Section 32 which is recorded as bearing N 89° 51' 47" W.