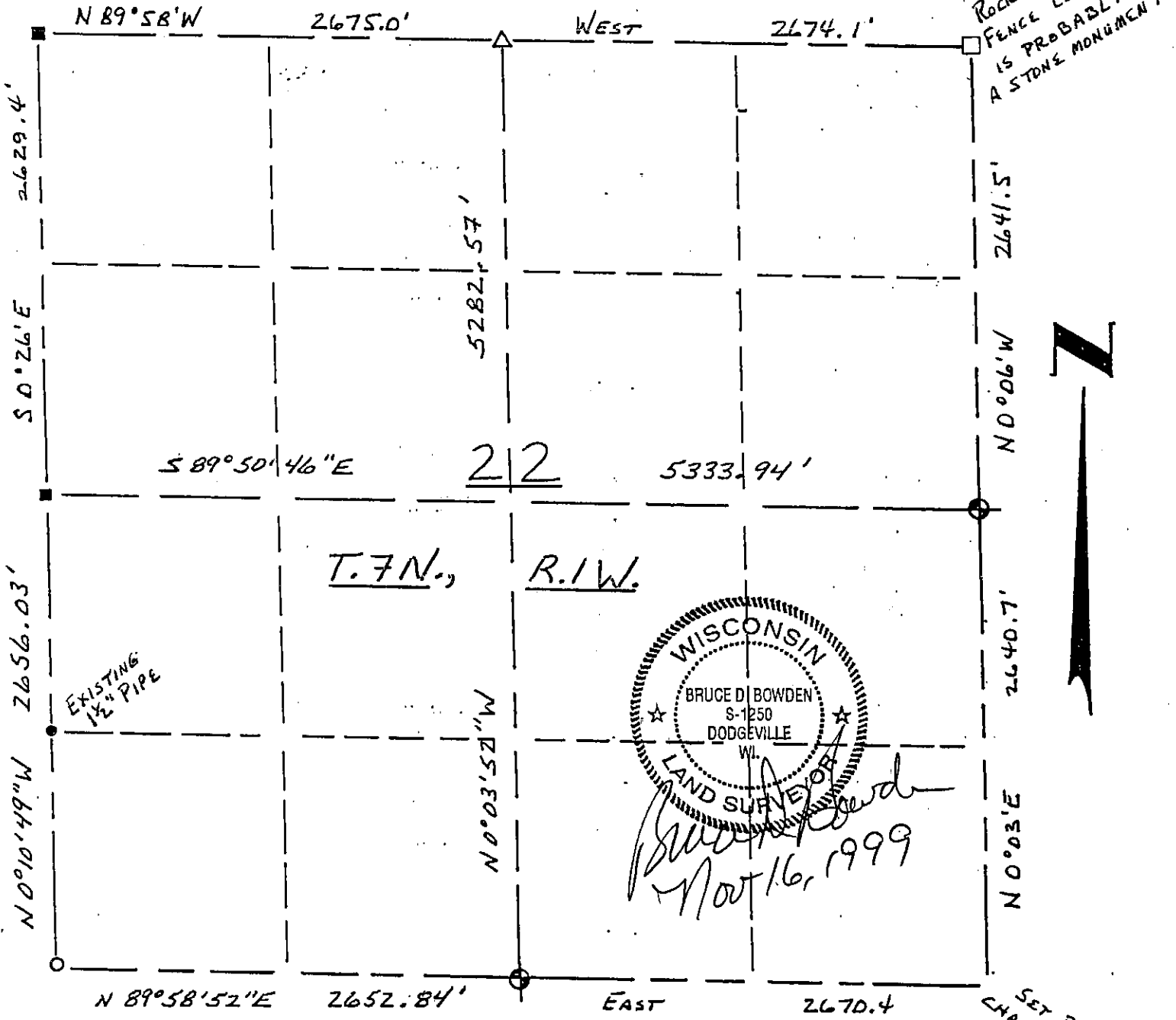


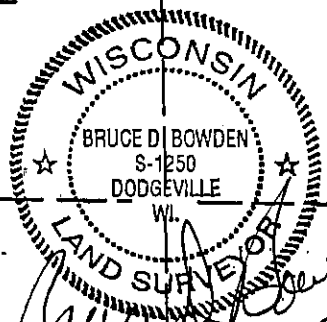
# GRANT COUNTY

## Section Summary

22 - T7N - R1W  
 SECTION TOWN RANGE



Rock Found By  
Fence Corner  
is probably  
a stone monument



*Bruce D. Bowden*  
 Nov 16, 1999

Set Post at  
change in fence

### LEGEND

- △ COUNTY MONUMENT - FD
- STONE OR CONCRETE MONUMENT
- ⊕ OTHER (specify) COUNTY MONUMENT - SET
- #6 (3/4" dia) REBAR - EXISTING
- RAILROAD SPIKE - SET OVER
- EXISTING 1" IRON PIPE IN ROAD

### NOTE:

Relationships of all section corners to other section corners shall be shown hereon by bearing and distance or grid coordinates

Show or describe bearing reference