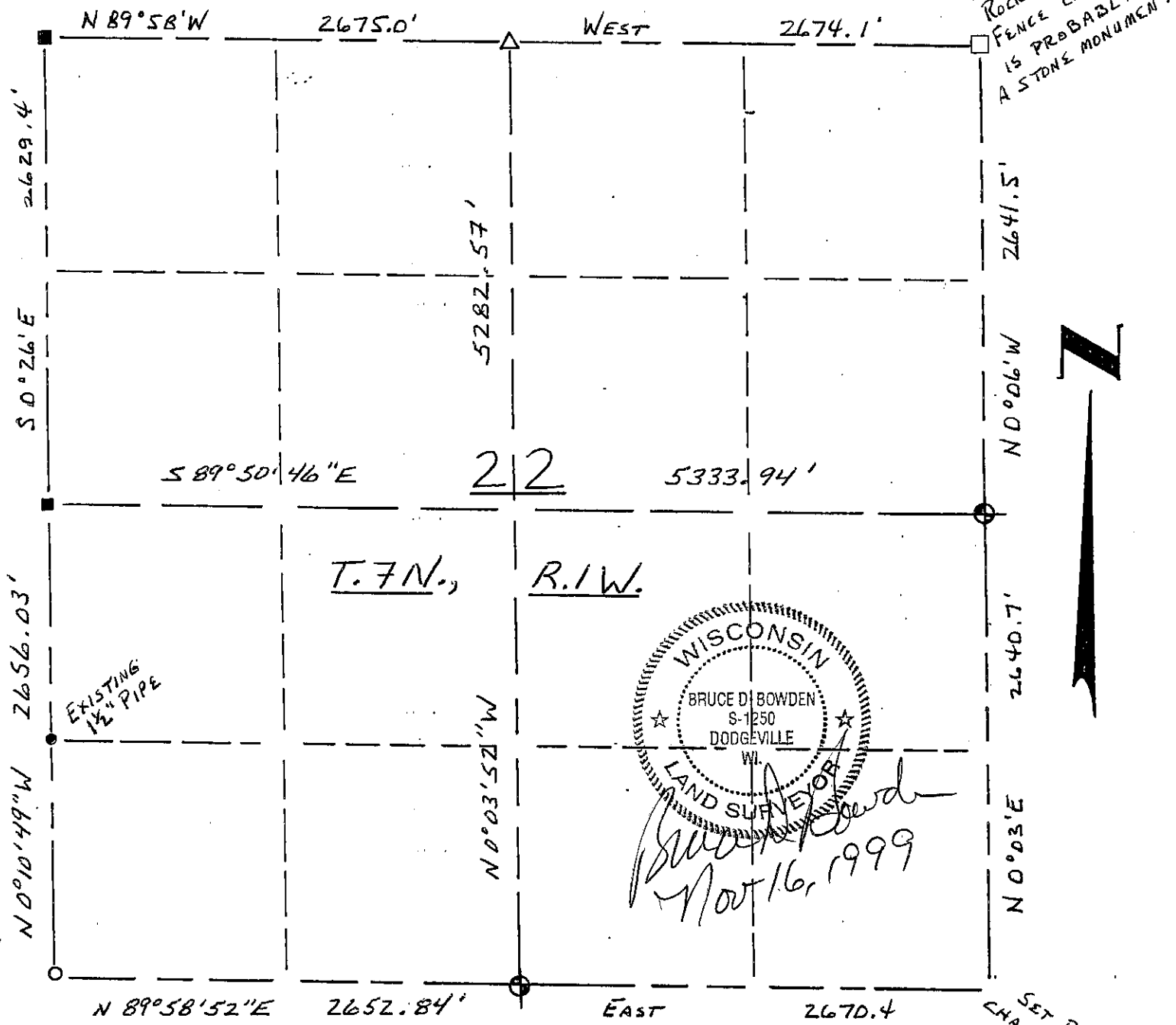


GRANT COUNTY

Section Summary

22 - T7N - R1W
 SECTION TOWN RANGE



LEGEND

- △ COUNTY MONUMENT - FD
- STONE OR CONCRETE MONUMENT
- ⊕ OTHER (specify) COUNTY MONUMENT - SET
- #6 (3/4" dia) REBAR - EXISTING
- RAILROAD SPIKE - SET OVER
- EXISTING 1" IRON PIPE IN ROAD

NOTE:

Relationships of all section corners to other section corners shall be shown hereon by bearing and distance or grid coordinates

Show or describe bearing reference