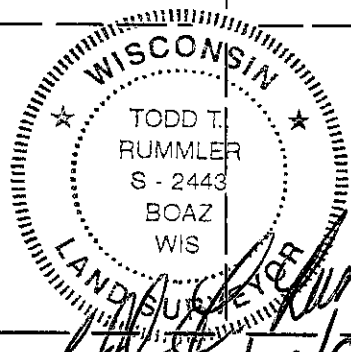
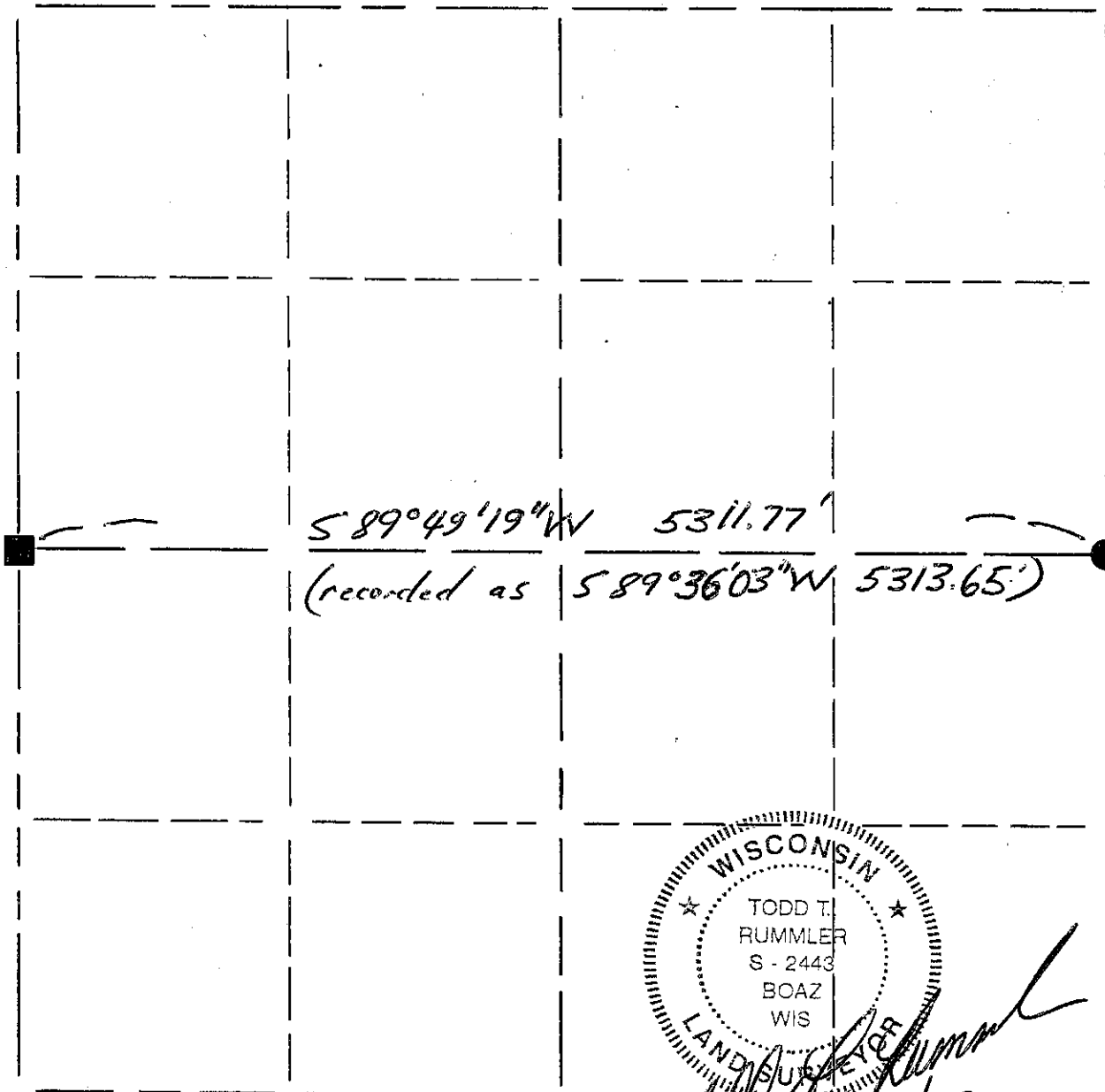


GRANT COUNTY

Section Summary

21 - T7N - R1W
SECTION TOWN RANGE



Todd T. Rummeler
5/29/00

LEGEND

- △ COUNTY MONUMENT
- STONE OR CONCRETE MONUMENT
- OTHER (specify) No. 6 x 24" rebar - fd.
- No. 10 x 30" rebar - set

NOTE:

Relationships of all section corners to other section corners shall be shown hereon by bearing and distance or grid coordinates

Show or describe bearing reference

Grant County Coordinate System