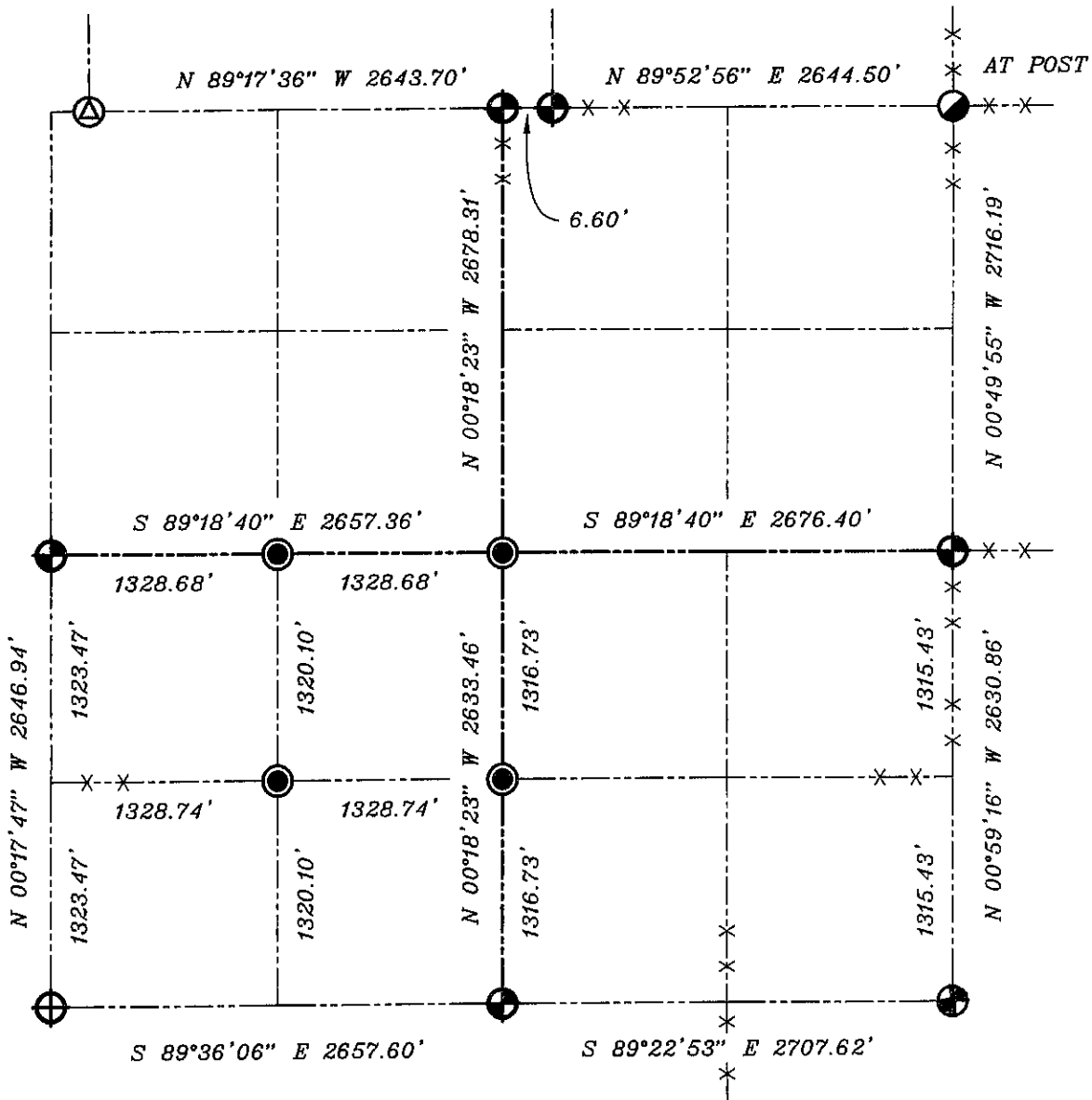


# GRANT COUNTY

## SECTION SUMMARY

3 - 7N - 1W  
**SECTION      TOWN      RANGE**








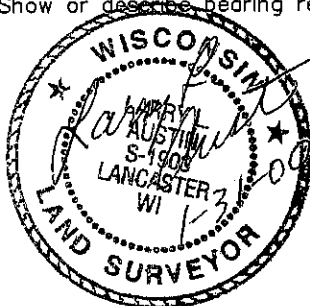
**NOTE:**

Relationships of all section corners to other section corners shall be shown hereon by bearing and distance or grid coordinates

Show or describe bearing reference

**LEGEND**

-  NO. 8 X 30" REBAR SET WITH GRANT COUNTY ALUMINUM CAP
-  ALUMINUM MONUMENT FOUND
-  1" IRON PIPE FOUND EMBEDDED IN BASE OF TREE
-  NO. 6 X 24" REBAR SET WITH YELLOW PLASTIC CAP
-  1" IRON PIPE FOUND



BEARINGS REFERENCED TO THE EAST-WEST QUARTER LINE OF SECTION 3, WHICH IS ASSUMED TO BEAR S 89°18'40" E.