

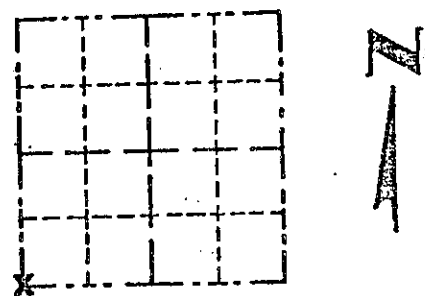
Castle Rock Zopf

GRANT COUNTY

Survey Monument Record

CORNER NO. 133
SECTION 31
TOWN 7 N
RANGE 1 W

TYPE OF MONUMENT 1" Sq. x 36" Steel Rod
STATE PLANE COORDINATES: N _____
E _____
ELEVATION — M.S.L. DATUM: _____
THETA ANGLE: _____
FIELD BOOK: _____
PAGE _____



LOCATION
(Indicated by "X")



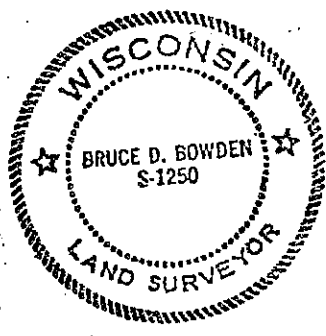
BASIS FOR MONUMENT LOCATION

(Use reverse side if necessary)

Show info such as: History of corner, with reference to Vol. and pg., dates, surveyor; exact description of monument replaced; if location computed, by taped or EDM traverse; landowner, remarks, etc.

Monument destroyed by road construction and reset from ties to a survey by David D. Eisele dated 1971.

SEAL:



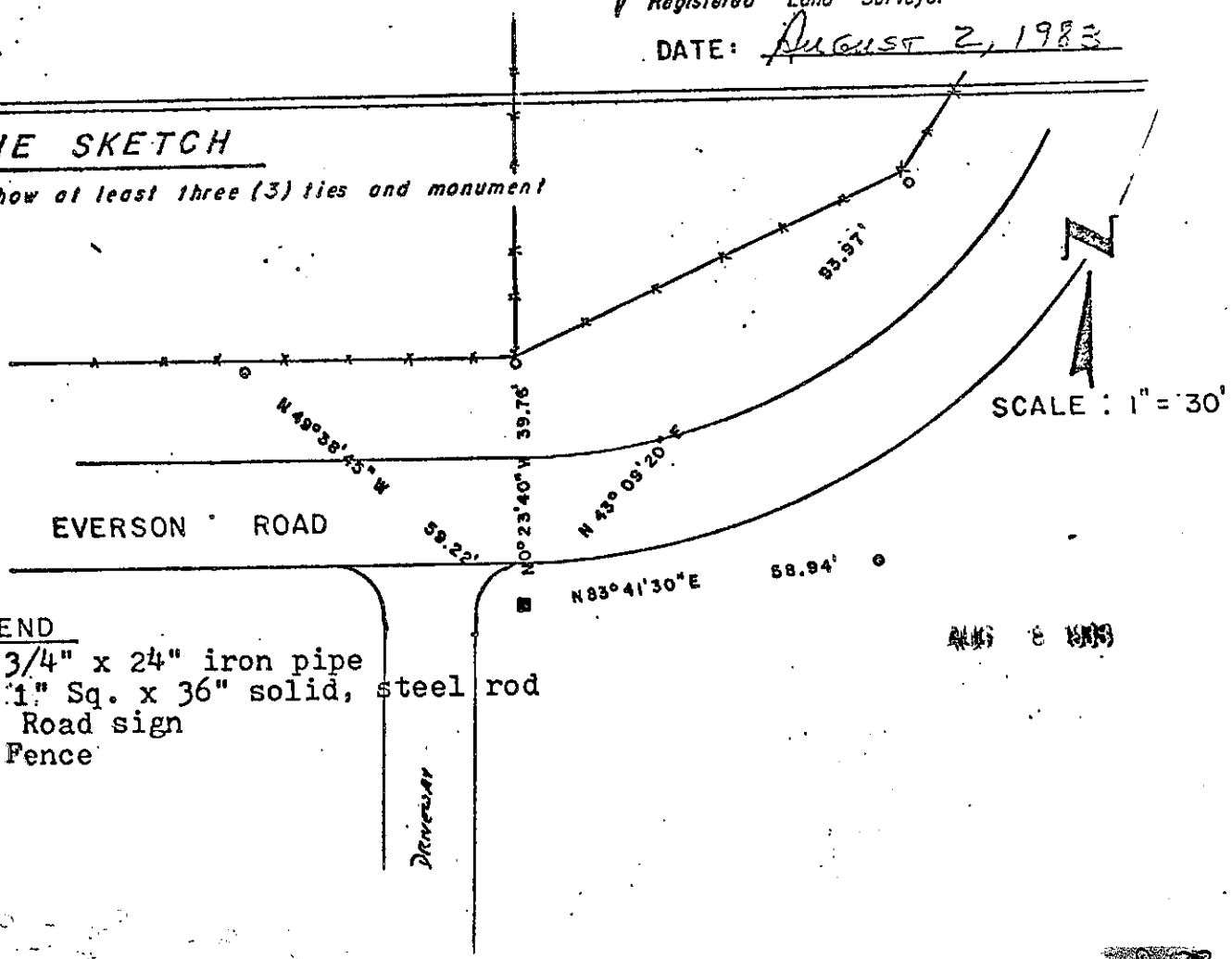
CERTIFIED CORRECT

Bruce D. Bowden
Registered Land Surveyor

DATE: August 2, 1983

TIE SKETCH

Show at least three (3) ties and monument



LEGEND

- 3/4" x 24" iron pipe
- 1" Sq. x 36" solid, steel rod
- △ Road sign
- *** Fence

AUG 8 1983