

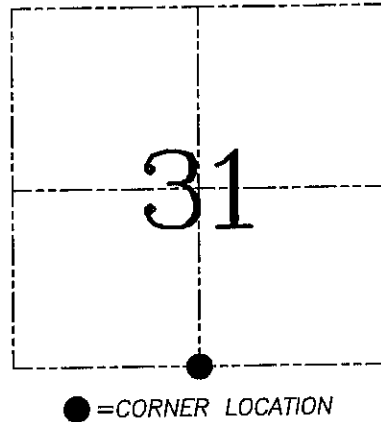
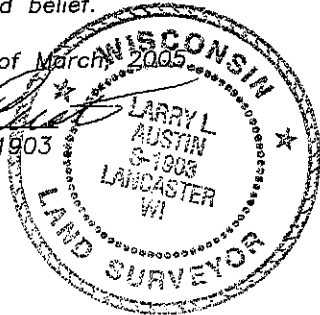
**U.S. PUBLIC LAND SURVEY MONUMENT RECORD – GRANT COUNTY, WI**  
**Section 31, Town 7 North Range 1 West, Town of Castle Rock**

CERTIFICATE

I, Larry L. Austin, do hereby certify that the corner location on this record was determined by me and/or under my direct supervision and that this U.S. public land survey monument record is correct and complete to the best of my knowledge and belief.

Dated this 5th day of March, 2005

*Larry L. Austin*  
 Larry L. Austin S-1903



HISTORY OF CORNER ESTABLISHMENT

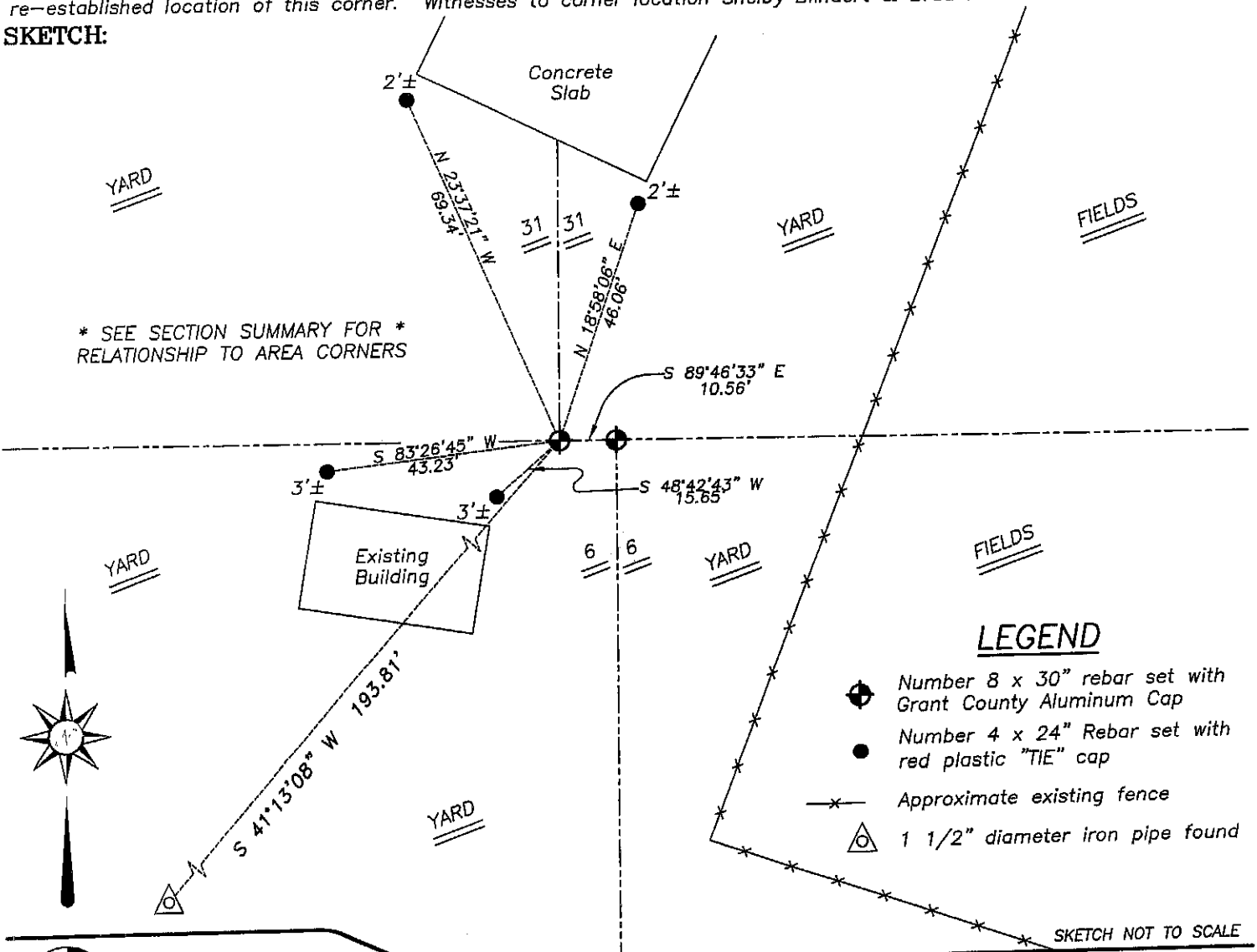
Corner was originally set in 1832 by Sibley. In 1983 Bowden measured to a 1.5" iron pipe at this location.

DESCRIPTION OF CORNER EVIDENCE FOUND

I found the 1.5" iron pipe and found it to be inaccurately set. I reset the corner proportionately and on-line between the Southwest and Southeast corners. Verified this location using EDM & GPS methods.

DESCRIPTION OF CORNER AND WITNESS MONUMENTS, references and accessories used to perpetuate the original or re-established location of this corner. Witnesses to corner location Shelby Blindert & Brad Hazen.

**SKETCH:**



**LEGEND**

- Number 8 x 30" rebar set with Grant County Aluminum Cap
- Number 4 x 24" Rebar set with red plastic "TIE" cap
- x- Approximate existing fence
- △ 1 1/2" diameter iron pipe found

SKETCH NOT TO SCALE



**Austin Engineering LLC**

4211 HWY 81 E, LANCASTER, WI 53813  
 PHONE 608-723-6363 FAX 608-723-6702

JOB NUMBER: 01s054  
 FIELDBOOK: TDSR, 2502  
 G:\T7NR2W\35  
 H:\TIE\T7NR1W\132

DRAWN BY: BJ HAZEN  
 APPROVED: LL AUSTIN

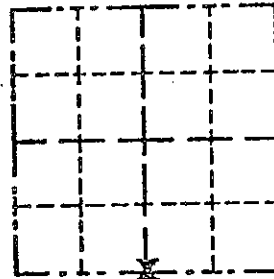
# GRANT COUNTY

## Survey Monument Record

TYPE OF MONUMENT 1 1/2" x 24" Iron Pipe  
 STATE PLANE COORDINATES: N \_\_\_\_\_  
 E \_\_\_\_\_  
 ELEVATION — M.S.L. DATUM: \_\_\_\_\_  
 THETA ANGLE: \_\_\_\_\_  
 FIELD BOOK: \_\_\_\_\_  
 PAGE \_\_\_\_\_

CORNER NO. 132  
 SECTION 31  
 TOWN 7 N  
 RANGE 1 W

*Castle  
Road  
207*



LOCATION  
(Indicated by "X")

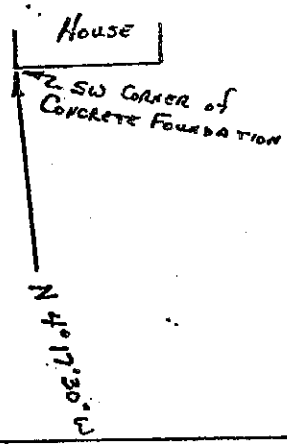
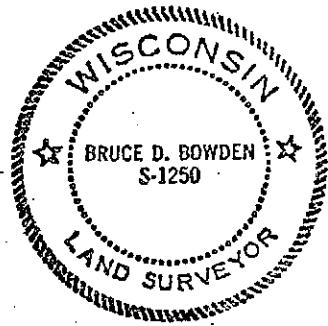
### BASIS FOR MONUMENT LOCATION

(Use reverse side if necessary)

Show info such as: History of corner, with reference to Vol. and pg., dates, surveyor; exact description of monument replaced; if location computed, by taped or EDM traverse; landowner, remarks, etc.

SEAL:

Corner set by single proportionate measurement and checked with existing physical evidence within the section.



CERTIFIED CORRECT

*Bruce D. Bowden*  
 Registered Land Surveyor

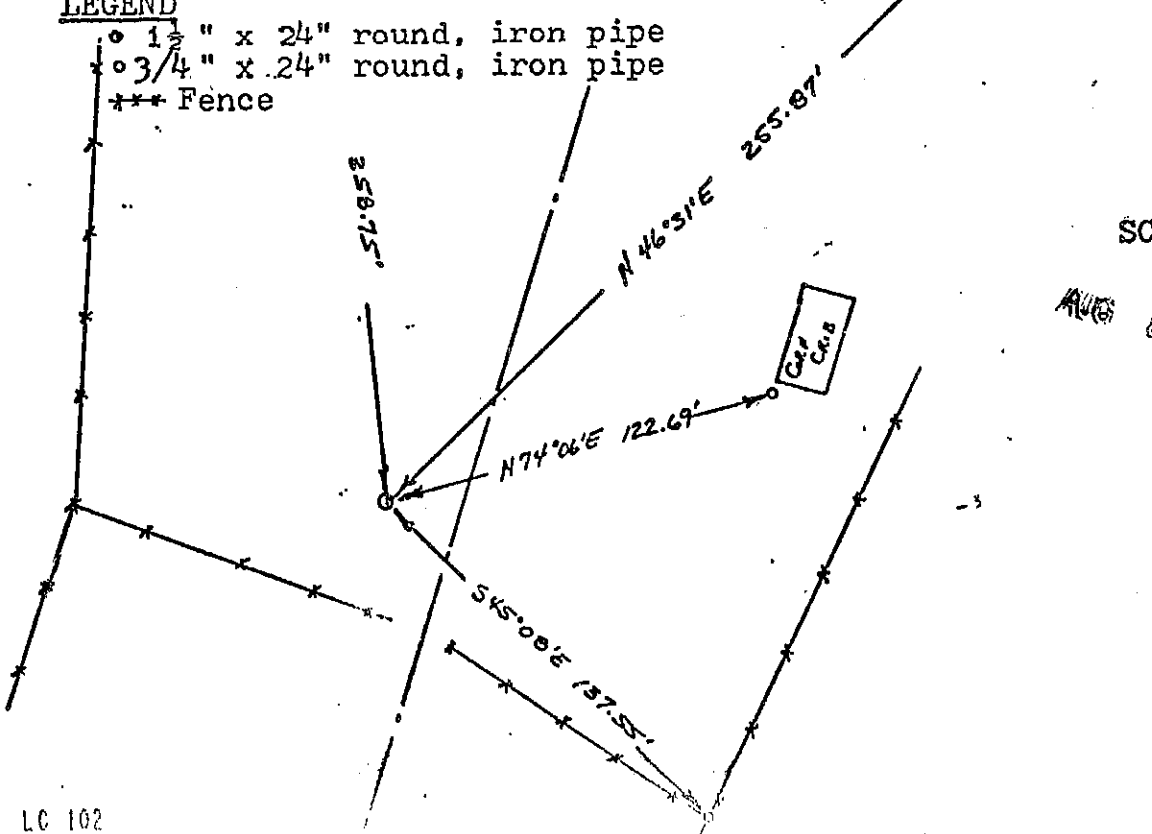
DATE: AUGUST 2, 1983

### TIE SKETCH

Show at least three (3) ties and monument

#### LEGEND

- 1 1/2" x 24" round, iron pipe
- 3/4" x 24" round, iron pipe
- \*\*\* Fence



SCALE : 1" = 30'

AUG 8 1983