

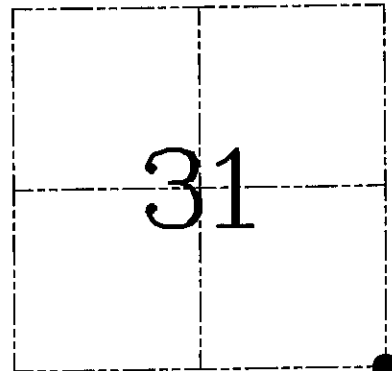
U.S. PUBLIC LAND SURVEY MONUMENT RECORD – GRANT COUNTY, WI
Section 31, Town 7 North Range 1 West, Town of Castle Rock

CERTIFICATE

I, Larry L. Austin, do hereby certify that the corner location on this record was determined by me and/or under my direct supervision and that this U.S. public land survey monument record is correct and complete to the best of my knowledge and belief.

Dated this 5th day of March, 2005

Larry L. Austin



● = CORNER LOCATION

HISTORY OF CORNER ESTABLISHMENT

Corner was originally set in 1832 by Sibley. In 1983 Bowden showed a 1 1/2" iron pipe at this location. No other record of the corner was found.

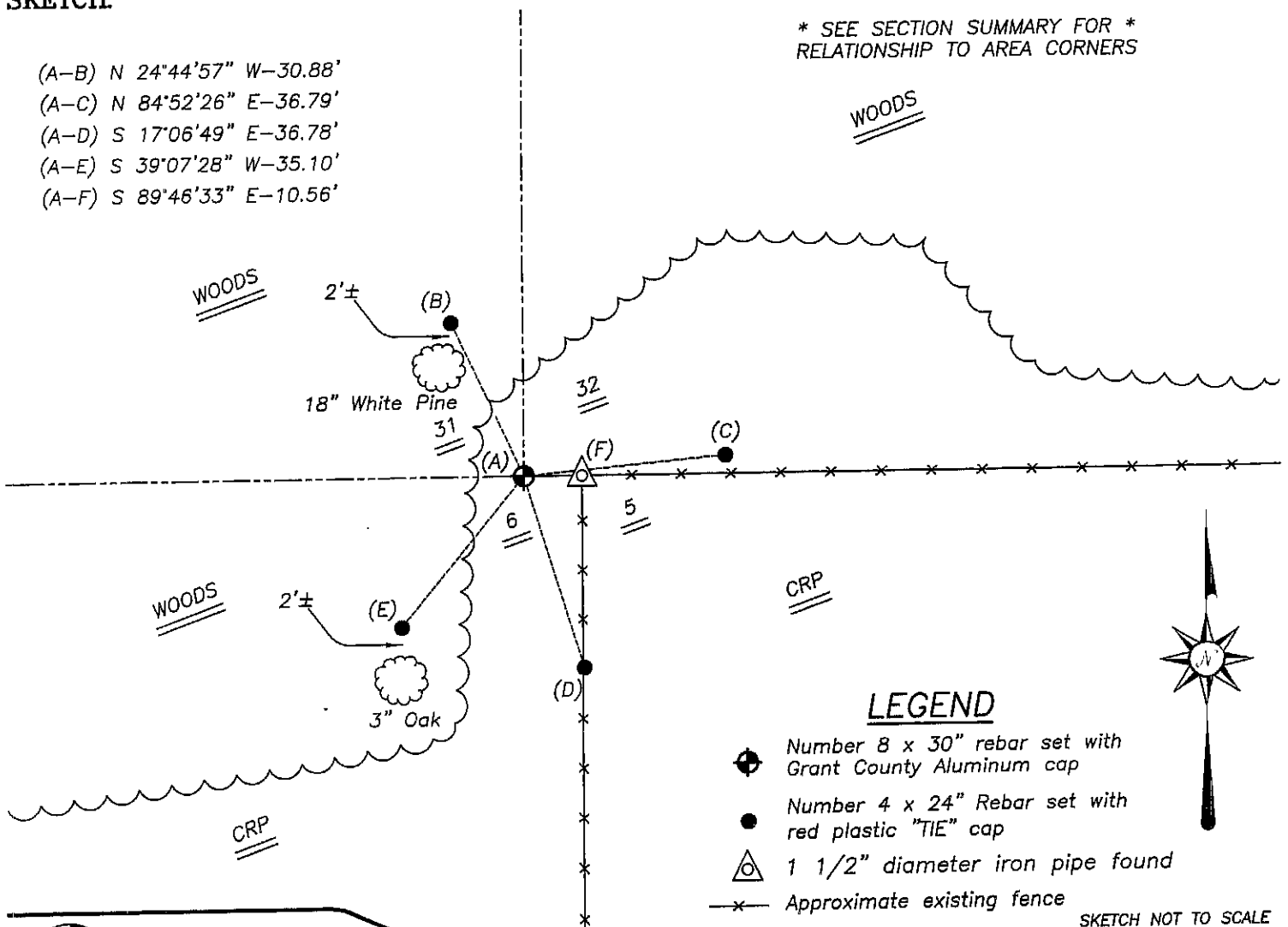
DESCRIPTION OF CORNER EVIDENCE FOUND

I found the 1 1/2" iron pipe but it is marking the Northeast corner of Section 6. I set the corner at the recorded offset from the 1 1/2" iron pipe. Verified this location using EDM & GPS methods.

DESCRIPTION OF CORNER AND WITNESS MONUMENTS, references and accessories used to perpetuate the original or re-established location of this corner. Witnesses to corner location Shelby Blindert and Brad Hazen.

SKETCH:

- (A-B) N 24°44'57" W-30.88'
- (A-C) N 84°52'26" E-36.79'
- (A-D) S 17°06'49" E-36.78'
- (A-E) S 39°07'28" W-35.10'
- (A-F) S 89°46'33" E-10.56'



* SEE SECTION SUMMARY FOR *
RELATIONSHIP TO AREA CORNERS

LEGEND

- Number 8 x 30" rebar set with Grant County Aluminum cap
- Number 4 x 24" Rebar set with red plastic "TIE" cap
- △ 1 1/2" diameter iron pipe found
- x- Approximate existing fence

SKETCH NOT TO SCALE



Austin Engineering LLC

4211 HWY B1 E, LANCASTER, WI 53813
 PHONE 608-723-6363 FAX 608-723-6702

JOB NUMBER 01S054
 FIELDBOOK: TDSR, 2502
 G:\T7NR2W\35
 H:\TIE\T7NR1W\131

DRAWN BY: BJ HAZEN
 APPROVED: LL AUSTIN