

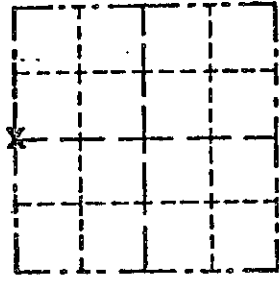
GRANT COUNTY

Survey Monument Record

Castle Rock Prof

CORNER NO. 114
 SECTION 31
 TOWN 7N
 RANGE 1W

TYPE OF MONUMENT 1" x 30" Iron Pipe
 STATE PLANE COORDINATES: N _____
 E _____
 ELEVATION — M.S.L. DATUM: _____
 THETA ANGLE: _____
 FIELD BOOK: _____
 PAGE _____



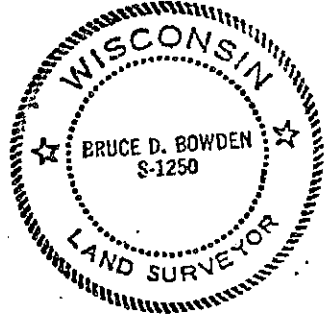
LOCATION
(Indicated by "X")

BASIS FOR MONUMENT LOCATION

(Use reverse side if necessary)
 Show info such as: History of corner, with reference to Vol. and pg., dates, surveyor; exact description of monument replaced; if location computed, by taped or EDM traverse; landowner, remarks, etc.

Pipe found as set by David D. Eisele for a survey from 1971.

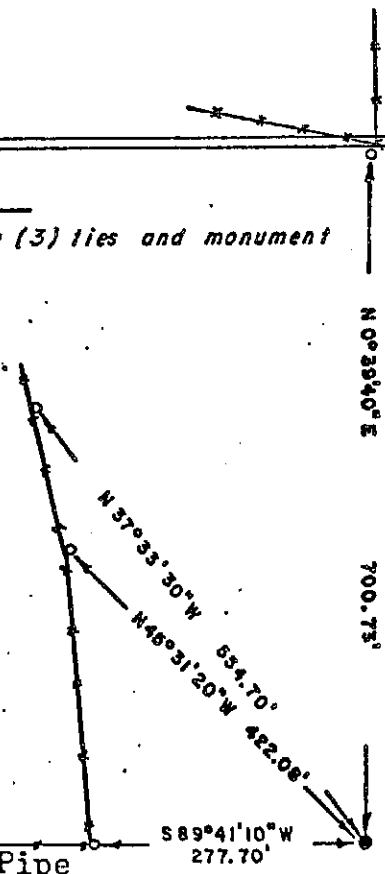
SEAL:



CERTIFIED CORRECT
Bruce D. Bowden
 Registered Land Surveyor
 DATE: August 2, 1983

TIE SKETCH

Show at least three (3) ties and monument



SCALE: 1" = 200'

AUG 8 1983

LEGEND

- 3/4" x 24" Iron Pipe
- 1 1/2" x 30" Iron Pipe Found
- - - - - Fence