

# U.S. Public Land Survey Monument Record

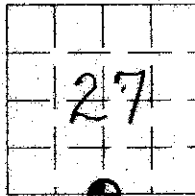
(a) Identify the corner by reference to the U.S. public land survey system.

This record shall show the location of the corner and shall include all of the following nine elements (a through i).

Sec. 27, T 7 N, R 1 W

 = Corner monument restored.

The SE corner of the SW quarter of Section 27,  
Town 7 North, Range 1 West, Castle Rock Twp.,  
Grant County, Wisconsin.



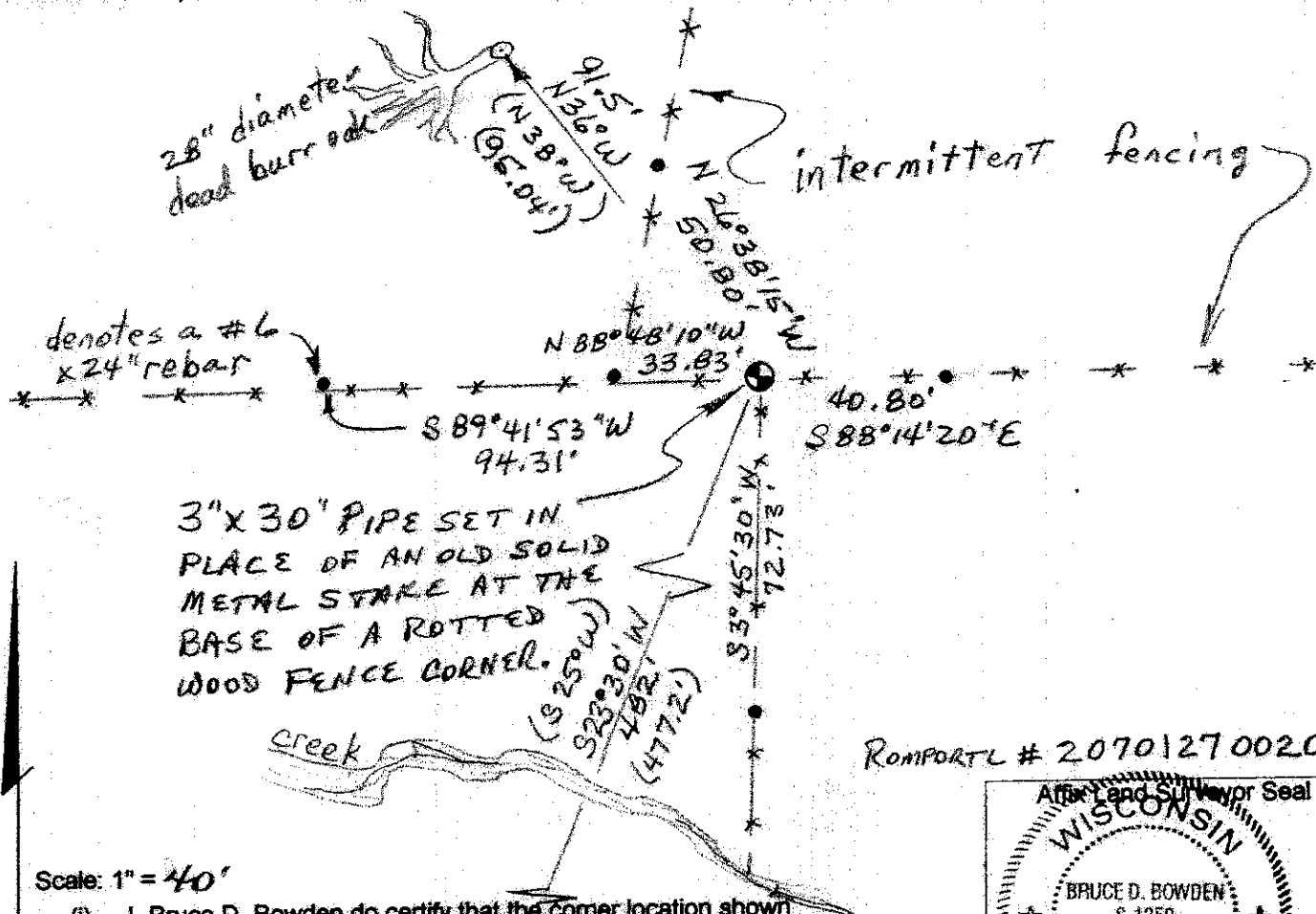
(f) The corner was restored through acceptance of  
(1) an obliterated evidence location  
(2) a found perpetuated location  
(3) lost corner proportionate methods

(b) Describe any record evidence, monument evidence, occupational evidence, testimonial evidence or any other material evidence you considered, and whether the monument was placed or found.

FOUND AND ACCEPTED AN OLD IRON STAKE AT A ROTTED FENCE CORNER OF A DOWNED FENCE. THIS LOCATION IS PROVEN BY BOTH ORIGINAL BEARING TREES, THE NORTHWEST TREE IS DEAD AND DOWN. I REPLACED THE STAKE WITH A 3" DIAMETER BY 30" PIPE. THE RECORDED DIMENSIONS ARE REASONABLE TO THIS LOCATION.

GRANT Co. coord. N 595837.44  
E 881054.29

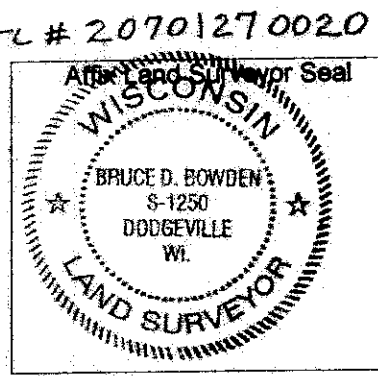
(c, d, e, g, h, i) Plan view drawing below, provide reference ties to at least 4 witness monuments, or, if the location is within a municipality, to at least 2 witness monuments. Depict the relevant monuments and reference ties in sufficient detail to enable accurate relocation of the corner monument, if disturbed. Indicate North. Describe any material discrepancy between the location of the corner as restored or reestablished and the location of that corner as previously monumented by distance and direction. Show the discrepancy on the plan view and the distances between the corner as previously monumented. If the corner was reestablished through lost corner proportionating methods, show the method, including the directions and distances to other public land survey corners used for proportioning in determining the corner location.



Scale: 1" = 40'

(i) I, Bruce D. Bowden do certify that the corner location shown on this record was determined by me or under my direction and control and that this U.S. Public Land Survey Monument Record is correct and complete to the best of my knowledge and belief.

Bruce D. Bowden Signature      DEC 21, 2017 Date



32" burr oak