

Note: Provided by Grant County Surveyor 4/9/26, it is reported this work was conducted in 2020. While they are not signed or stamped it was determined this should be filed for other surveyors to see.

# GRANT COUNTY U.S. PUBLIC LAND SURVEY MONUMENT RECORD

INSTRUCTIONS: THIS RECORD SHALL SHOW THE LOCATION OF THE CORNER AND SHALL INCLUDE ALL OF THE FOLLOWING ELEMENTS (A THROUGH I).

(A) IDENTIFY THE CORNER AS REFERENCED TO THE U.S. PUBLIC LAND SURVEY SYSTEM

■ = CORNER MONUMENT RESTORED

WITNESSES TO CORNER LOCATION:

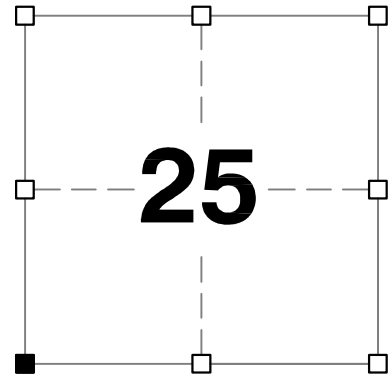
**JAY P. ADAMS**  
**PAIGE O. JELINEK**

GEOGRAPHIC COORDINATES,  
NAD 83 (2011) ADJUSTMENT:

**LATITUDE: 43° 02' 45.81551"**  
**LONGITUDE: 90° 26' 55.52679"**

WISCONSIN COORDINATE REFERENCE SYSTEM (WISCRS),  
GRANT COUNTY, NAD 83 (2011) ADJUSTMENT:

**NORTHING: 596,037.643**  
**EASTING: 888,898.328**



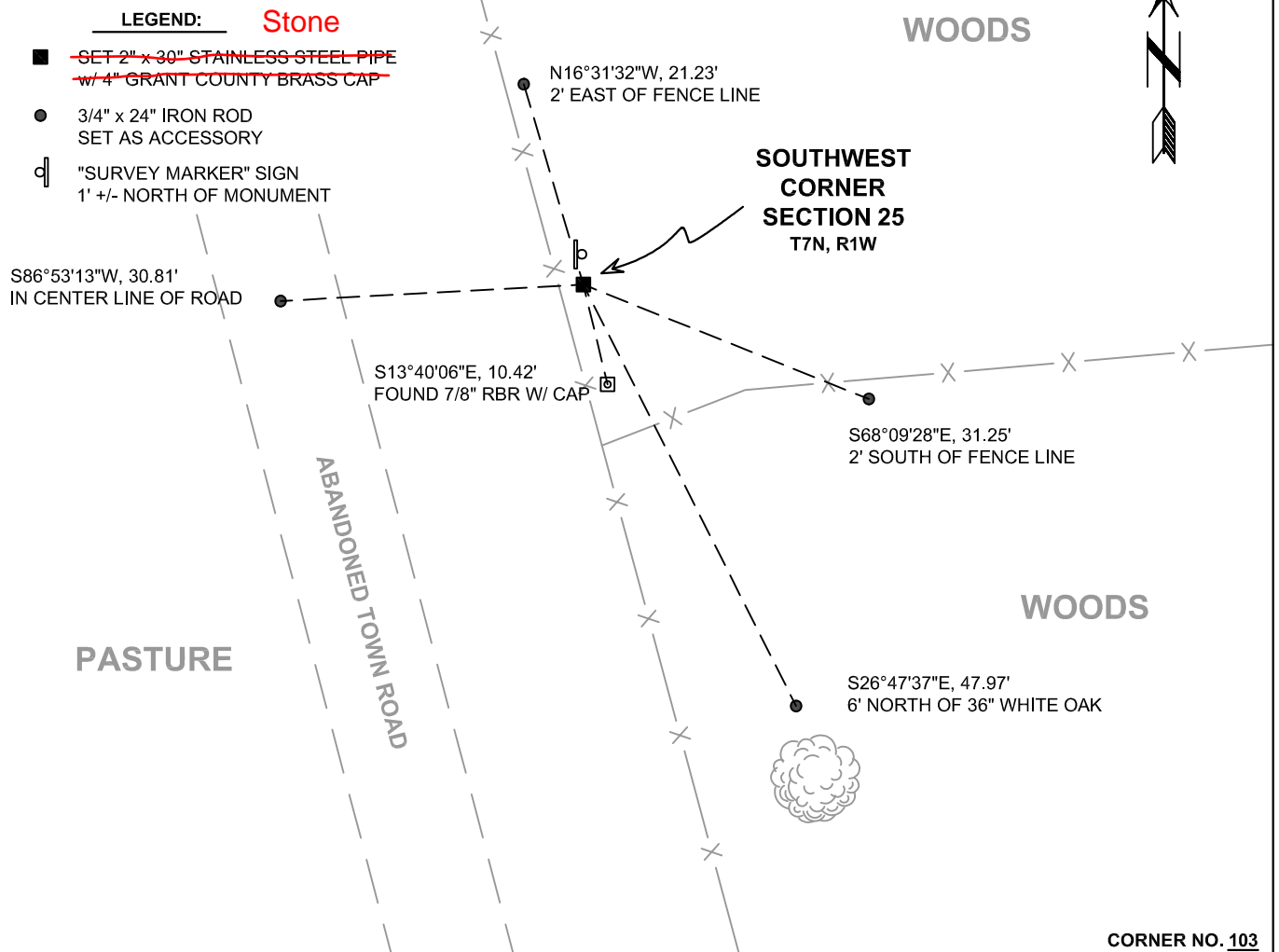
**SECTION 25**  
**TOWNSHIP 7 NORTH, RANGE 1 WEST**  
**TOWN OF CASTLE ROCK**

(B) DESCRIBE ANY RECORD EVIDENCE, MONUMENT EVIDENCE, OCCUPATIONAL EVIDENCE, TESTIMONIAL EVIDENCE OR ANY OTHER MATERIAL EVIDENCE YOU CONSIDERED, AND WHETHER THE MONUMENT WAS FOUND OR PLACED.

**I COULD FIND NO MONUMENTS OR BEARING TREES FROM THE ORIGINAL GOVERNMENT SURVEY. I RECOVERED AN ANCIENT STONE REPORTED BY BARBER FROM THE HISTORIC COUNTY SURVEYOR'S SUBSEQUENT RESURVEY. I RECOVERED THE 7/8" REBAR WITH A GRANT COUNTY ALUMINUM CAP REPORTED BY NILES. I ACCEPTED THE ANCIENT STONE AS THE BEST AVAILABLE EVIDENCE OF THE ORIGINAL GOVERNMENT CORNER.**

(C) IN THE PLAN VIEW DRAWING BELOW, PROVIDE REFERENCE TIES TO AT LEAST 4 WITNESS MONUMENTS. WITNESS MONUMENTS SHALL BE MADE OF CONCRETE, NATURAL STONE, IRON, BEARING TREES OR ANY OTHER EQUALLY DURABLE MATERIAL. DEPICT THE RELEVANT MONUMENTS AND REFERENCE TIES WITH SUFFICIENT DETAIL TO ENABLE ACCURATE RELOCATION OF THE CORNER IF THE CORNER MONUMENT IS DISTURBED.

(D)



71103

# U.S. PUBLIC LAND SURVEY MONUMENT RECORD - GRANT COUNTY, WI

Section 26, Town 7 North Range 1 West, Town of Castle Rock (a)

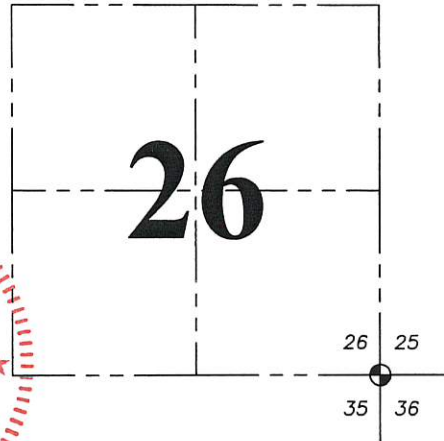
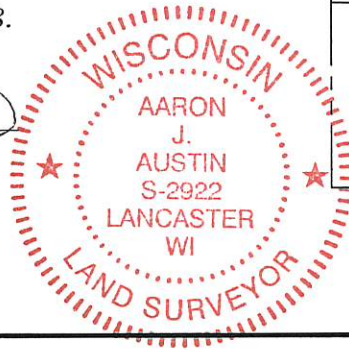
NOTE: This form is intended and designed to fulfill all requirements of the Wisconsin Administrative Code Chapter A-E 7.08, U.S. Public Land Survey Monument Record (3) (a) (b) (c) (d) (e) (f) (g) (h) (i).

CERTIFICATE: (i)

I, Aaron J. Austin, Wisconsin Professional Land Surveyor, do hereby certify that the corner location on this record was determined by me and/or under my direct supervision and that this U.S. Public Land Survey Monument Record is correct and complete to the best of my knowledge and belief.

Dated this 23rd day of August, 2018.

*Aaron J. Austin*  
Aaron J. Austin, S-2922



☉ = CORNER LOCATION

Grant County Coordinates:  
NAD 83 (2011)  
Northing: 596,027.58  
Easting: 888,900.55

HISTORY OF CORNER ESTABLISHMENT:

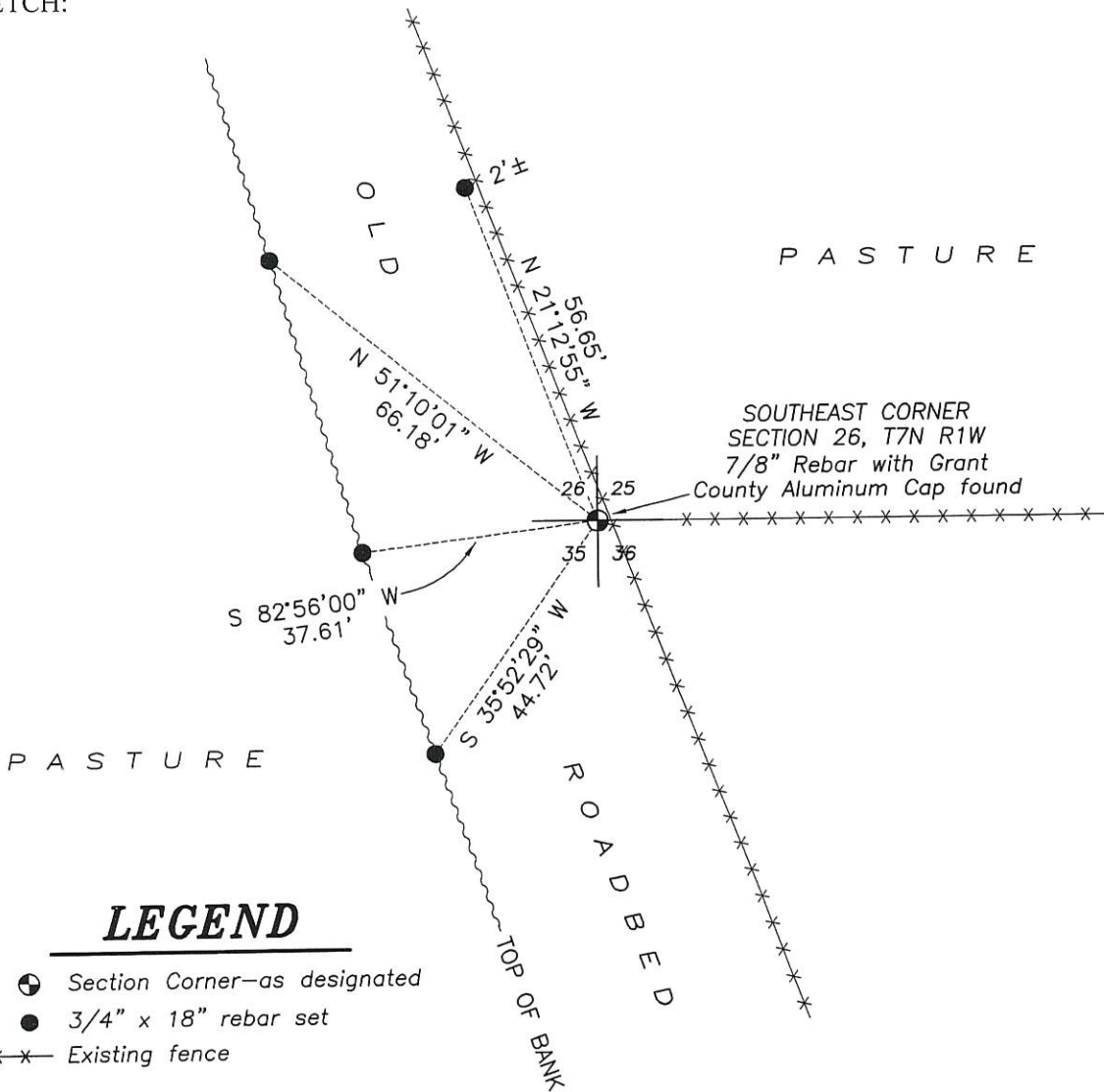
Sylvester Sibley set the original corner in 1833.  
Joe Niles found a monument on a Survey dated 1-6-2016 and filed in Book 38, Page 30.

DESCRIPTION OF CORNER EVIDENCE FOUND: (b) (f) (g) (h)

I found the monument as shown on Niles Survey. I set four witness corners after I verified it's location with G.P.S. and E.D.M. methods

DESCRIPTION OF CORNER AND WITNESS MONUMENTS, references and accessories used to perpetuate the original or re-established location of this corner. (c) (d) (e)  
Witnesses to corner location Shane Austin, Owen Austin.

SKETCH:



### LEGEND

- ☉ Section Corner—as designated
- 3/4" x 18" rebar set
- x-x- Existing fence

