

U.S. PUBLIC LAND SURVEY MONUMENT RECORD - GRANT COUNTY, WI

Section 26, Town 7 North Range 1 West, Town of Castle Rock (a)

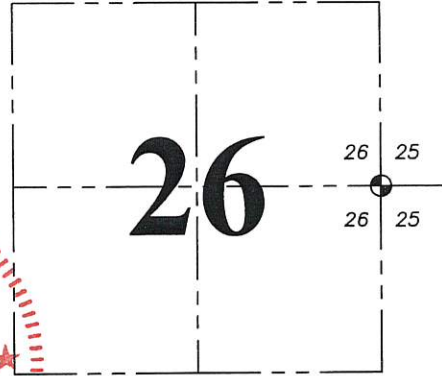
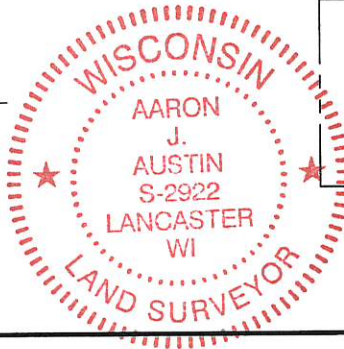
NOTE: This form is intended and designed to fulfill all requirements of the Wisconsin Administrative Code Chapter A-E 7.08, U.S. Public Land Survey Monument Record (3) (a) (b) (c) (d) (e) (f) (g) (h) (i).

CERTIFICATE:(i)

I, Aaron J. Austin, Wisconsin Professional Land Surveyor, do hereby certify that the corner location on this record was determined by me and/or under my direct supervision and that this U.S. Public Land Survey Monument Record is correct and complete to the best of my knowledge and belief.

Dated this 23rd day of August, 2018.

Aaron J. Austin, S-2922



⊕ = CORNER LOCATION

Grant County Coordinates: NAD 83 (2011) Northing: 596,670.52 Easting: 888,859.79

HISTORY OF CORNER ESTABLISHMENT:

Sylvester Sibley set the original corner in 1833. Laurence Schmit set a 7/8" rebar with a Grant County Aluminum Cap at the corner and prepared a Survey Monument Record dated 2-22-2006.

DESCRIPTION OF CORNER EVIDENCE FOUND: (b) (f) (g) (h)

I found the monument as set by Mr. Schmit. At the time preliminary measurements were taken, no Survey Monument Record was found for this corner at the Grant County Tax Lister's Office. A Survey Monument Record was found later after contacting Mr. Schmit. I set four new witness corners not knowing Mr. Schmit had previously tied this corner. Since I already had the witness corners established prior to obtaining the Survey Monument Record, I have shown the location of Schmit's ties. The monument was verified with G.P.S. and E.D.M. methods

DESCRIPTION OF CORNER AND WITNESS MONUMENTS, references and accessories used to perpetuate the original or re-established location of this corner. (c) (d) (e) Witnesses to corner location Shane Austin, Owen Austin.

LEGEND

- ⊕ Section Corner-as designated
● 3/4" x 24" rebar set
○ 5/8" rebar by Schmit ties were not field located (See note above)
-x-x- Existing fence

SKETCH:

EAST 1/4 CORNER SECTION 26, T7N R1W 7/8" Rebar with Grant County Aluminum Cap found

