

71096

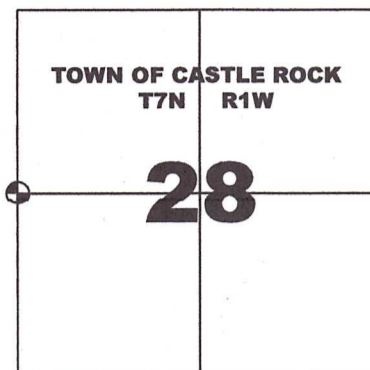
GRANT COUNTY

CERTIFIED U.S. PUBLIC LAND SURVEY MONUMENT RECORD

INSTRUCTIONS: THIS RECORD SHALL SHOW THE LOCATION OF THE CORNER AND SHALL INCLUDE ALL OF THE FOLLOWING ELEMENTS (A-1)

(A) IDENTIFY THE CORNER BY REFERENCE TO THE U.S. PUBLIC LAND SURVEY SYSTEM
WEST QUARTER CORNER SECTION 28, T7N, R1W

⊕ = CORNER MONUMENT RECOVERED -
3/4" DIA. IRON REBAR MONUMENT FOUND
WITNESSES TO CORNER LOCATION
1) SEAN M. WALSH



MEASUREMENTS BASED UPON TRADITIONAL TOTAL STATION
MEASUREMENTS FROM GPS CONTROL

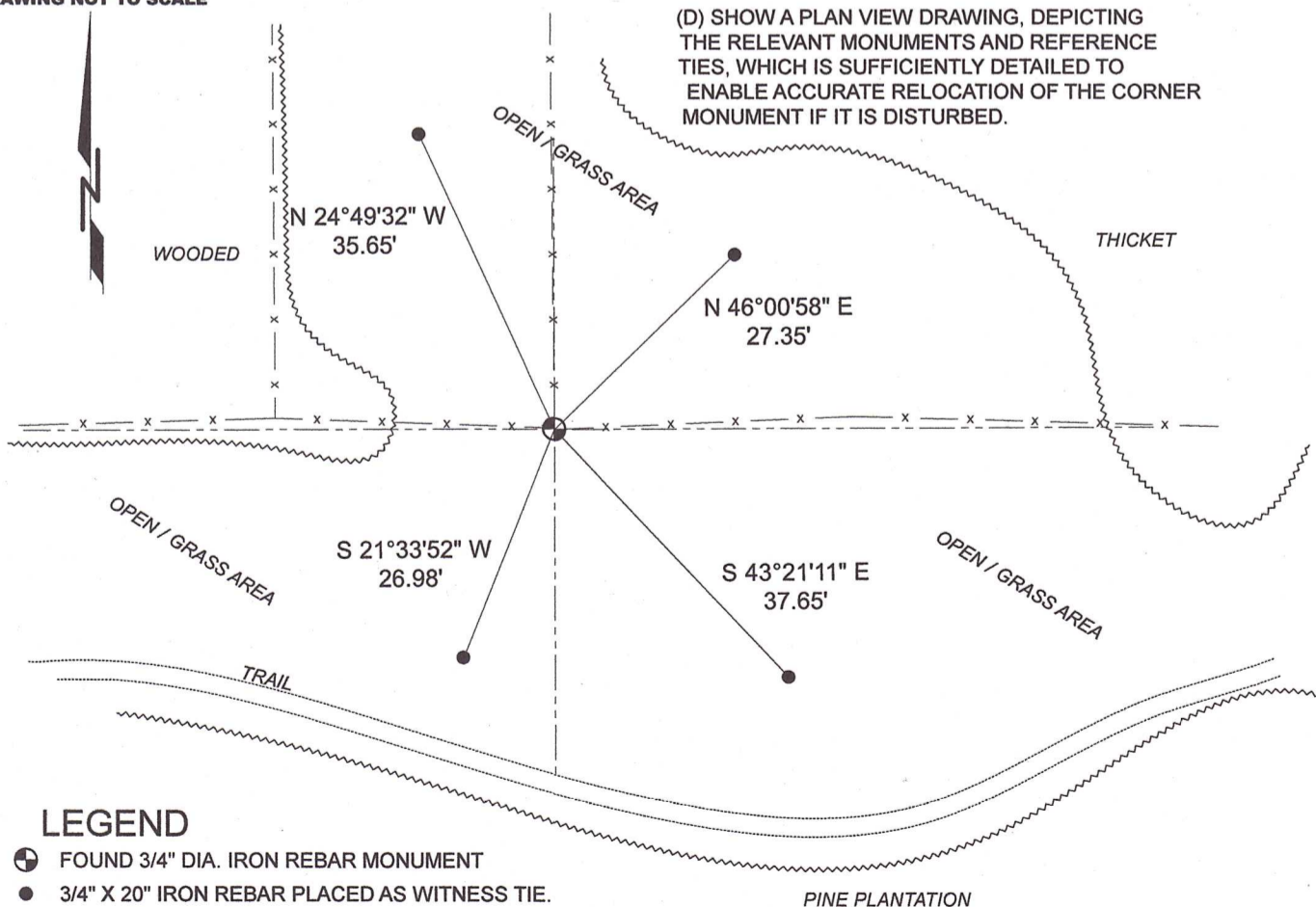
BASIS OF BEARINGS AND ORIENTAITON
WICRS GRANT COUNTY, NAD 83(2011)

(B) A DESCRIPTION OF ANY RECORD EVIDENCE, MONUMENT EVIDENCE, OCCUPATIONAL EVIDENCE, TESTIMONIAL EVIDENCE OR ANY OTHER MATERIAL EVIDENCE CONSIDERED BY THE PROFESSIONAL LAND SURVEYOR AND WHETHER THE MONUMENT WAS FOUND OR PLACED.

ON MARCH 14, 2024, IN CONJUNCTION WITH A PRIVATE SURVEY FOR LARRY KROPF, LOCATED IN PART OF SECTION 28, T7N, R1W, TOWN OF CASTLE ROCK, I FOUND THE 3/4" DIA IRON REBAR MONUMENT PREVIOUSLY DOCUMENTED BY BRUCE BOWDEN IN NOVEMBER OF 1993. FINDING NO EVIDENCE TO THE CONTRARY, I HAVE ACCEPTED MR. BOWDEN'S MONUMENT AS THE BEST AVAILABLE EVIDENCE. THE WITNESS TIES PREVIOUSLY DOCUMENTED BY MR. BOWDEN WERE NOT RECOVERABLE DUE TO EROSION AND UPROOTED TREES. OTHER CHARACTERISTICS OF THE VICINITY HAVE CHANGED SIGNIFICANTLY, THUS I INSTALLED THE 4 WITNESS TIES ILLUSTRATED HERE AND PREPARED NEW RECORD TO PERPETUATE THIS CORNER LOCATION.

(C) IN THE PLAN VIEW DRAWING BELOW, PROVIDE REFERENCE TO AT LEAST 4 WITNESS MONUMENTS OR, IF THE LOCATION IS WITHIN A MUNICIPALITY, TO AT LEAST 2 WITNESS MONUMENTS. (WITNESS MONUMENTS SHALL BE MADE OF CONCRETE, NATURAL STONE, IRON OR OTHER EQUALLY DURABLE MATERIAL) DESCRIBE WITNESS MONUMENTS

DRAWING NOT TO SCALE



(D) SHOW A PLAN VIEW DRAWING, DEPICTING THE RELEVANT MONUMENTS AND REFERENCE TIES, WHICH IS SUFFICIENTLY DETAILED TO ENABLE ACCURATE RELOCATION OF THE CORNER MONUMENT IF IT IS DISTURBED.

LEGEND

- ⊕ FOUND 3/4" DIA. IRON REBAR MONUMENT
- 3/4" X 20" IRON REBAR PLACED AS WITNESS TIE.
- x - Existing fence line

GRANT COUNTY
CERTIFIED U.S. PUBLIC LAND SURVEY MONUMENT RECORD

RECOVERY PROCEDURES:

(E) A DESCRIPTION OF ANY RECORD EVIDENCE, MONUMENT EVIDENCE, OCCUPATIONAL EVIDENCE, TESTIMONIAL EVIDENCE OR ANY OTHER MATERIAL EVIDENCE CONSIDERED BY THE SURVEYOR, AND WHETHER THE MONUMENT WAS FOUND OR PLACED;

SEE OPPOSITE SIDE

(F) WHETHER THE CORNER WAS RESTORED THROUGH ACCEPTANCE OF AN OBLITERATED EVIDENCE LOCATION OR A FOUND PERPETUATED LOCATION; A FOUND PERPETUATED LOCATION

(G) WHETHER THE CORNER WAS REESTABLISHED THROUGH LOST-CORNER PROPORTIONATE METHODS; IF SO, SHOW THE DIRECTIONS AND DISTANCES TO OTHER PUBLIC LAND SURVEY CORNERS WHICH WERE USED AS EVIDENCE OR USED FOR PROPORTIONING IN DETERMINING THE CORNER LOCATION;

N/A

7.08 (3) (h)

N/A

SURVEYOR'S CERTIFICATE: CHAPTER 7.08 (3) (I)

THE UNDERSIGNED HEREBY CERTIFIES THAT THE U.S. PUBLIC LAND SURVEY MONUMENT RECORD SHOWN WAS DETERMINED BY THEM OR UNDER THEIR DIRECTION AND IS CORRECT AND COMPLETE TO THE BEST OF THEIR KNOWLEDGE AND BELIEF.



Sean M. Walsh

3/14/24

DATE CERTIFIED

U. S. PUBLIC LAND SURVEY MONUMENT RECORD

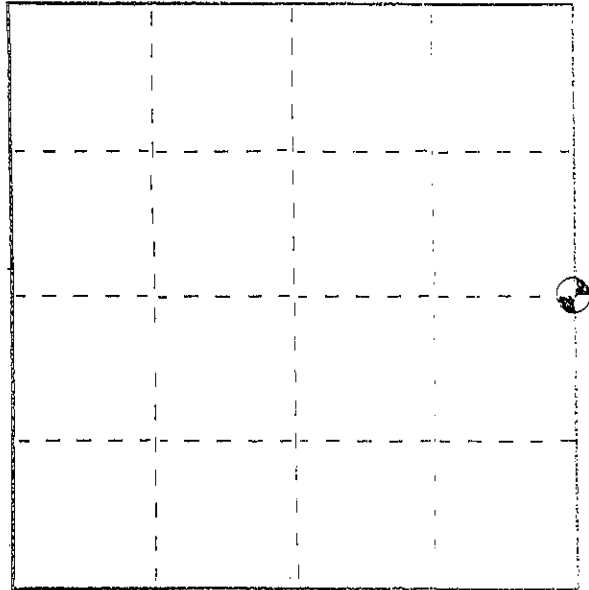
DEC - 1903

INSTRUCTIONS: This record shall show the location of the corner and shall include all of the following nine elements (a through i).

(a) Identify the corner by reference to the U.S. public land survey system.

○ = Corner monument restored.

EAST 1/4 CORNER OF SECTION 29, TOWN 7 NORTH, RANGE 1 WEST, CASTLE ROCK TWP., GRANT COUNTY, WISC.

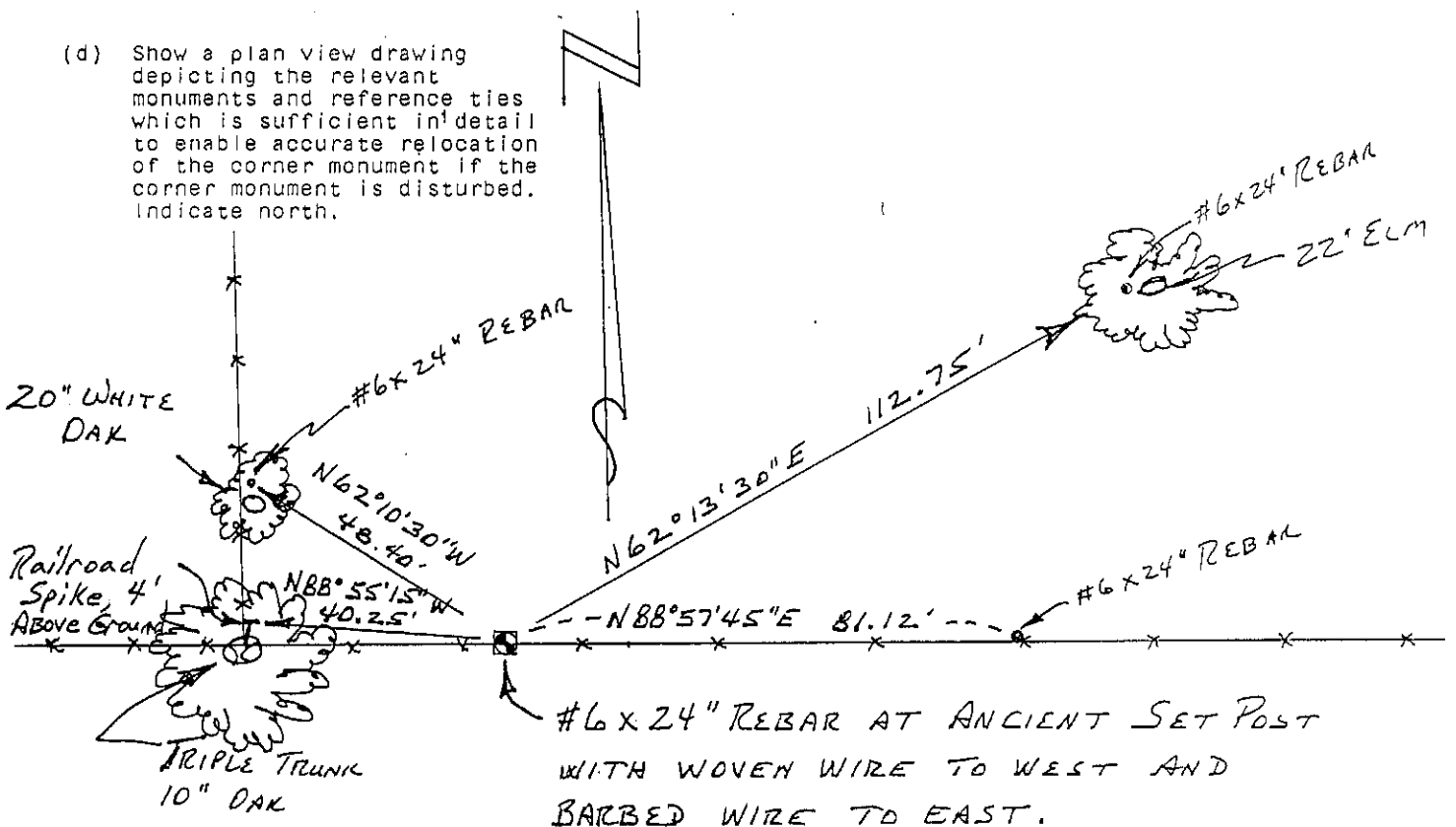


(b) Describe any record evidence, monument evidence, occupational evidence, testimonial evidence or any other material evidence you considered, and whether the monument was found or placed.

MONUMENT SET FROM EXISTING PHYSICAL EVIDENCE OF ROADS AND FENCES AFTER THE LOCATION WAS VERIFIED BY PROPORTIONATE MEASUREMENTS FROM AN EDM TRAVERSE OF THE AREA.

(c) In the plan view drawing below, provide reference ties to at least 4 witness monuments, or, if the location is within a municipality, to at least 2 witness monuments. (Witness monuments shall be made of concrete, natural stone, iron or other equally durable material, ~~wood~~.) Describe witness monuments.

(d) Show a plan view drawing depicting the relevant monuments and reference ties which is sufficient in detail to enable accurate relocation of the corner monument if the corner monument is disturbed. Indicate north.



SCALE: 1" = 30'

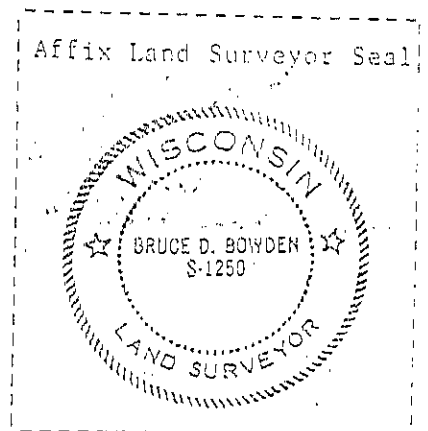
(e) Describe any material discrepancy between the location of the corner as restored or reestablished and the location of that corner as previously restored or reestablished by distance and direction. Show the discrepancy on the plan view drawing, under (d), above. Show the distances between the corner as previously restored or reestablished and (1) the corner as restored or reestablished, and (2) to at least 2 of the witness monuments shown on the drawing in (d), above.

NONE

(f) Was the corner restored through acceptance of (1) an obliterated evidence location, or (2) a ~~found perpetuated location?~~

(g&h) Was the corner reestablished through lost corner proportionate methods? If so, show the method, including the directions and distances to other public land survey corners used as evidence or used for proportioning in determining the corner location?

No.



(i) I, BRUCE D. BOWDEN
(type or print name) certify that the corner location shown on this record was determined by me or under my direction and control and that this U.S. Public Land Survey Monument Record is correct and complete to the best of my knowledge and belief.

Bruce D. Bowden Nov 15, 1993
Signature Date