

U.S. PUBLIC LAND SURVEY MONUMENT RECORD - GRANT COUNTY, WI

Section 20, Town 7 North Range 1 West, Town of Castle Rock (a)

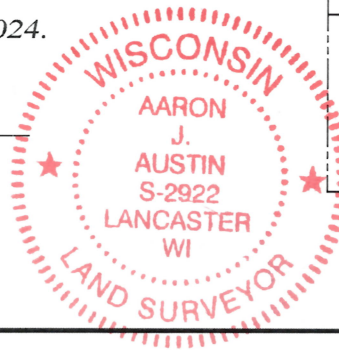
NOTE: This form is intended and designed to fulfill all requirements of the Wisconsin Administrative Code Chapter A-E 7.08, U.S. Public Land Survey Monument Record (3) (a) (b) (c) (d) (e) (f) (g) (h) (i).

CERTIFICATE: (i)

I, Aaron J. Austin, Wisconsin Professional Land Surveyor, do hereby certify that the corner location on this record was determined by me and/or under my direct supervision and that this U.S. Public Land Survey Monument Record is correct and complete to the best of my knowledge and belief.

Dated this 5th day of December, 2024.

Aaron J. Austin
Aaron J. Austin, S-2922



Grant County Coordinates:
NAD 83 (2011)
Northing: 601,180.70
Easting: 870,311.50

HISTORY OF CORNER ESTABLISHMENT:

Original corner was set in 1833 by Sylvester Sibley.
Bruce Bowden set a 1.5" Iron Pipe and prepared a Survey Monument Record dated 11-15-1993.

DESCRIPTION OF CORNER EVIDENCE FOUND: (b) (f) (g) (h)

I found the 1.5" Iron Pipe and two witness corners Bowden set. I set two witness corners after I verified the Monument's location with G.P.S. and E.D.M. methods.

DESCRIPTION OF CORNER AND WITNESS MONUMENTS, references and accessories used to perpetuate the original or re-established location of this corner. (c) (d) (e)

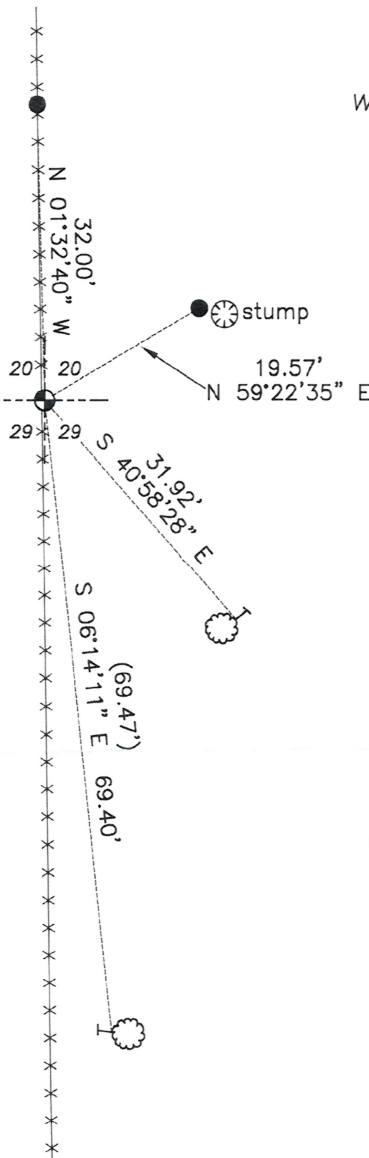
Witnesses to corner location Owen Austin, Tanner Austin.
Drawn by: Owen Austin.

SKETCH:

LEGEND

- ⊕ Section Corner—as designated
- 3/4" x 18" rebar set
- ⊙ Existing tree with pole barn spike
- x-x-x- Existing fence
- () Recorded as

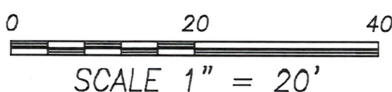
SOUTH 1/4 CORNER
SECTION 20, T7N R1W
1.5" Iron Pipe found.
(Above ground 3'±)



W O O D S

W O O D S

W O O D S



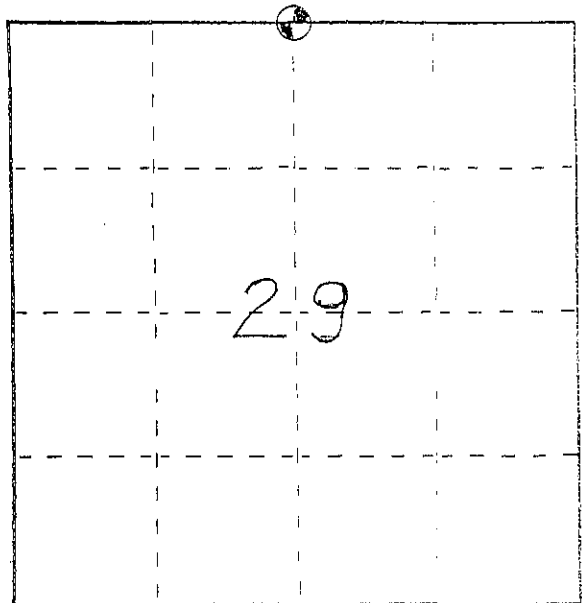
U. S. PUBLIC LAND SURVEY MONUMENT RECORD

DEC 2 1993

INSTRUCTIONS: This record shall show the location of the corner and shall include all of the following nine elements (a through i).

- (a) Identify the corner by reference to the U.S. public land survey system.
- = Corner monument restored.

NORTH 1/4 CORNER OF SECTION
29, TOWN 7 NORTH, RANGE 1
WEST, CASTLE ROCK TWP.,
GRANT COUNTY, WISC.

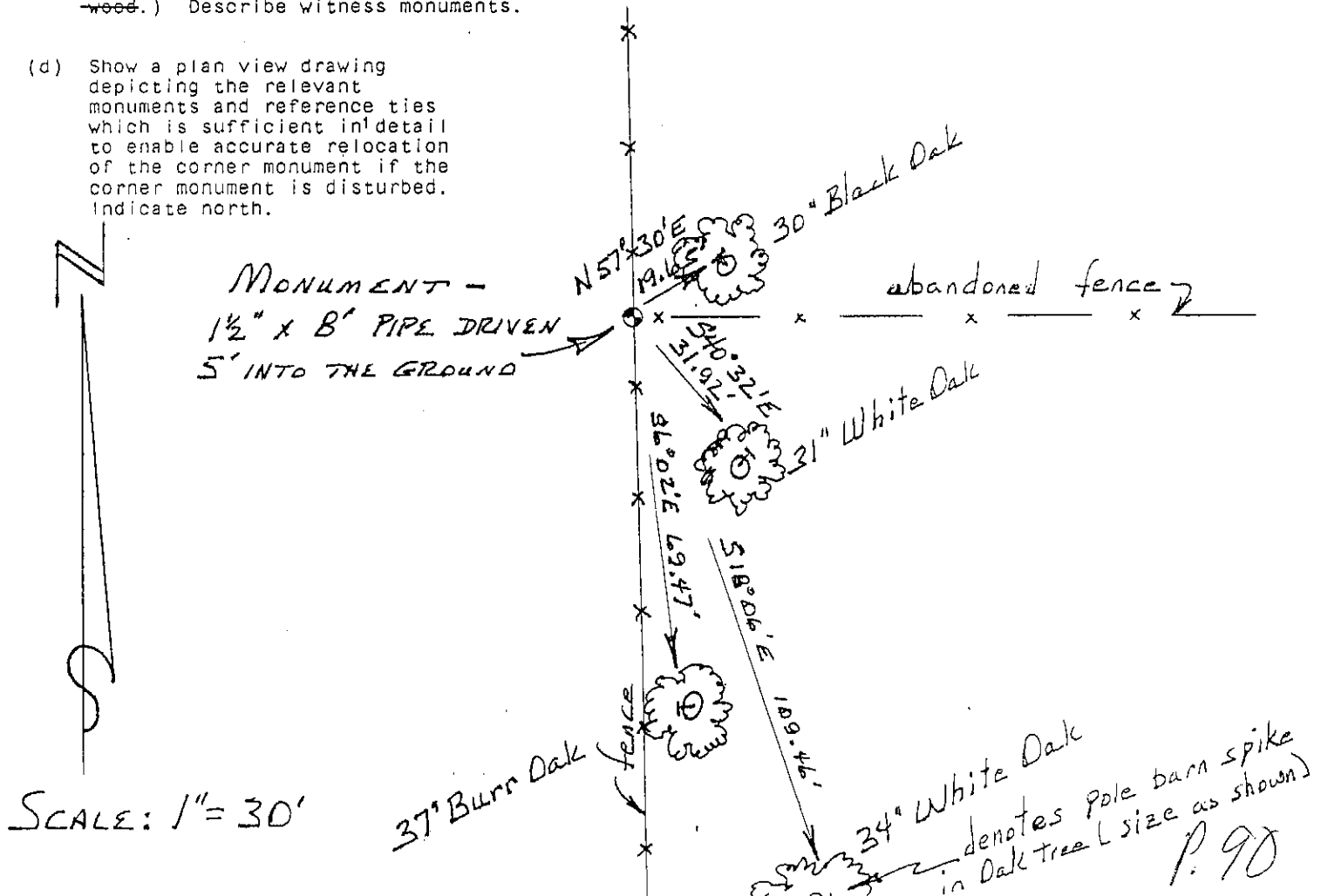


- (b) Describe any record evidence, monument evidence, occupational evidence, testimonial evidence or any other material evidence you considered, and whether the monument was found or placed.

MONUMENT SET FROM EXISTING PHYSICAL EVIDENCE OF
ROADS AND FENCES AFTER VERIFICATION BY PROPORTIONATE
MEASUREMENTS FROM AN EDM TRAVERSE OF THE AREA.

- (c) In the plan view drawing below, provide reference ties to at least 4 witness monuments, or, if the location is within a municipality, to at least 2 witness monuments. (Witness monuments shall be made of concrete, natural stone, iron or other equally durable material, ~~not~~ wood.) Describe witness monuments.

- (d) Show a plan view drawing depicting the relevant monuments and reference ties which is sufficient in detail to enable accurate relocation of the corner monument if the corner monument is disturbed. Indicate north.



(e) Describe any material discrepancy between the location of the corner as restored or reestablished and the location of that corner as previously restored or reestablished by distance and direction. Show the discrepancy on the plan view drawing under (d), above. Show the distances between the corner as previously restored or reestablished and (1) the corner as restored or reestablished, and (2) to at least 2 of the witness monuments shown on the drawing in (d), above.

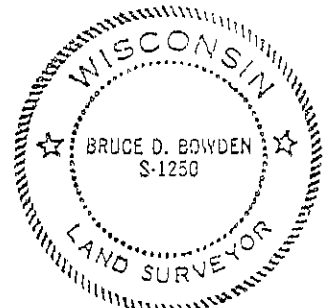
NONE

(f) Was the corner restored through acceptance of (1) an obliterated evidence location, ~~or (2) a found perpetuated location?~~

(g&h) Was the corner reestablished through lost corner proportionate methods? If so, show the method, including the directions and distances to other public land survey corners used as evidence or used for proportioning in determining the corner location?

No

Affix Land Surveyor Seal:



(i) I, BRUCE D. BOWDEN,

(type or print name) certify that the corner location shown on this record was determined by me or under my direction and control and that this U.S. Public Land Survey Monument Record is correct and complete to the best of my knowledge and belief.

Bruce D. Bowden Nov 15, 1993
Signature Date