

71083

U.S. PUBLIC LAND SURVEY MONUMENT RECORD - GRANT COUNTY, WI

Section 26, Town 7 North Range 1 West, Town of Castle Rock (a)

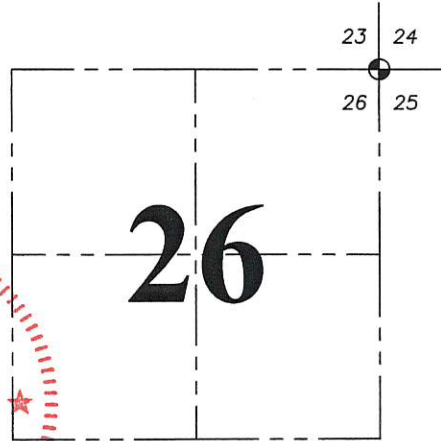
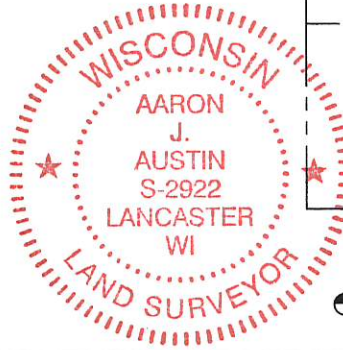
NOTE: This form is intended and designed to fulfill all requirements of the Wisconsin Administrative Code Chapter A-E 7.08, U.S. Public Land Survey Monument Record (3) (a) (b) (c) (d) (e) (f) (g) (h) (i).

CERTIFICATE: (i)

I, Aaron J. Austin, Wisconsin Professional Land Surveyor, do hereby certify that the corner location on this record was determined by me and/or under my direct supervision and that this U.S. Public Land Survey Monument Record is correct and complete to the best of my knowledge and belief.

Dated this 23rd day of August, 2018.

Aaron J. Austin
Aaron J. Austin, S-2922



☉ = CORNER LOCATION

Grant County Coordinates:
NAD 83 (2011)
Northing: 601,320.43
Easting: 888,823.61

HISTORY OF CORNER ESTABLISHMENT:

Sylvester Sibley set the original corner in 1833.

Stanley King set a 3/4" rebar with a Grant County Aluminum Cap at the corner and prepared a Survey Monument Record dated 2-17-2000.

DESCRIPTION OF CORNER EVIDENCE FOUND: (b) (f) (g) (h)

I found the monument as set by Mr. King and two witness corners in good condition. I found one disturbed witness corner and reset it. I set two additional witness corners after I verified the monument's location with G.P.S. and E.D.M. methods

DESCRIPTION OF CORNER AND WITNESS MONUMENTS, references and accessories used to perpetuate the original or re-established location of this corner. (c) (d) (e)

Witnesses to corner location Shane Austin, Owen Austin.

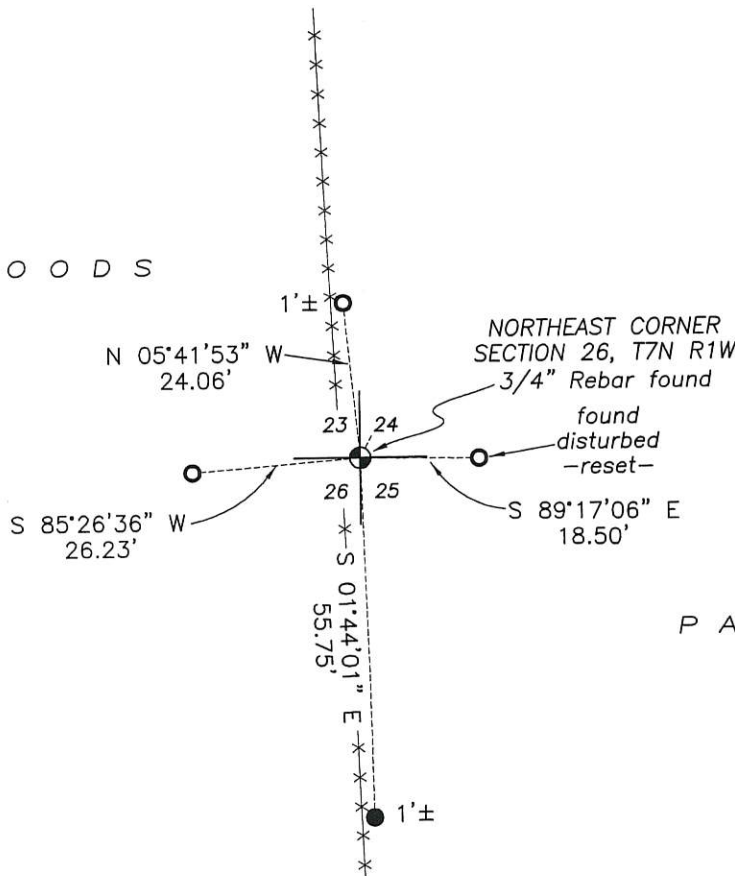
SKETCH:

LEGEND

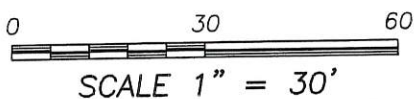
- ☉ Section Corner—as designated
- 3/4" x 18" rebar set
- 3/4" rebar found
- x-x- Existing fence



W O O D S



P A S T U R E



CERTIFIED LAND CORNER

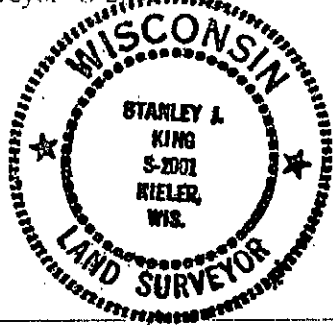
STATE OF WISCONSIN COUNTY OF GRANT

CERTIFICATE

I, Stanley King, do hereby certify that on the 16th day of February, 2000, I found no evidence of the South East corner of SECTION 23, T7N, R1W, Fourth Principal Meridian, and I re-established said corner according to the Wisconsin Statutes as shown and described hereon.

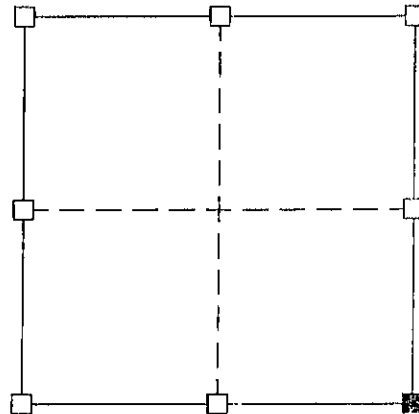
Dated this 17th day of February, 2000

Stanley King
Registered Land Surveyor--S-2001
Title



Seal:

SECTION 23



■ = Corner Location
T7N R1W
Town of: CASTLE ROCK

History of original corner establishment:
DIVISION OF SECTION

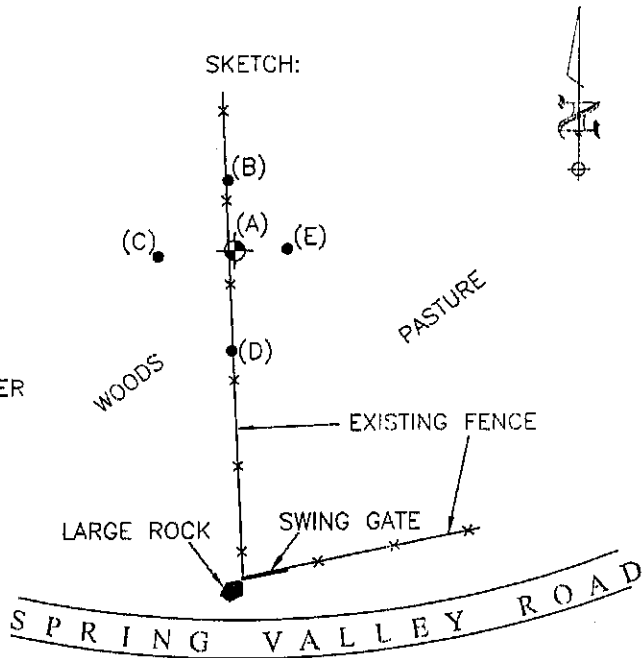
Description of corner evidence found:
FOUND NO EVIDENCE OF THE CORNER OR ITS WITNESS--
SET A REBAR WEIGHING A MIN. OF 1.50 LBS. PER LINEAL FOOT
WITH GRANT COUNTY MONUMENT CAP.

Description of corner and witness monuments, references, and accessories used to perpetuate the original or re-established location of this corner.

Witnesses to corner location:

Stanley J. King
Brad J. Hazen
Michael M. Miller

SKETCH:



- ⊗ = SECTION CORNER
- = TIE BAR

- (A-B)=24.06'
- (A-C)=26.23'
- (A-D)=34.53'
- (A-E)=17.81'

SURVEY CONTROL ORDER

Horizontal:
Vertical:

NOTE:

All points set being a 3/4" rebar weighing 1.50 lbs./lin. ft.

Corner	East (x)	North (y)	Elevation (z)	Zone
Control Sta. Name				