

# U.S. PUBLIC LAND SURVEY MONUMENT RECORD - GRANT COUNTY, WI

Section 24, Town 7 North Range 1 West, Town of Castle Rock (a)

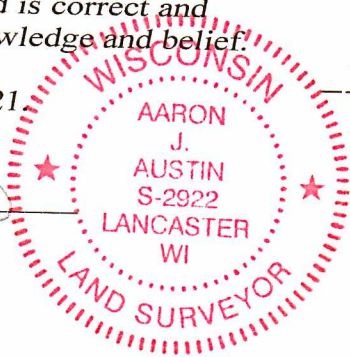
NOTE: This form is intended and designed to fulfill all requirements of the Wisconsin Administrative Code Chapter A-E 7.08, U.S. Public Land Survey Monument Record (3) (a) (b) (c) (d) (e) (f) (g) (h) (i).

### CERTIFICATE: (i)

I, Aaron J. Austin, Wisconsin Professional Land Surveyor, do hereby certify that the corner location on this record was determined by me and/or under my direct supervision and that this U.S. Public Land Survey Monument Record is correct and complete to the best of my knowledge and belief.

Dated this 20th day of July, 2021

*Aaron J. Austin*  
Aaron J. Austin, S-2922



⊕ = CORNER LOCATION

### Grant County Coordinates:

NAD 83 (2011)  
Northing: 603,966.15  
Easting: 888,805.62

### HISTORY OF CORNER ESTABLISHMENT:

Original corner was set in 1833 by Sylvester Sibley.  
No other Record found for this corner.

### DESCRIPTION OF CORNER EVIDENCE FOUND: (b) (f) (g) (h)

I set a 3/4" Rebar midway and online between the Northeast and the Southeast of Section 23. This coincides with a Plat of Survey done by Stan King filed in Book 6, Page 48. I set four witness after I verified the Monument's location with G.P.S. and E.D.M. methods.

### DESCRIPTION OF CORNER AND WITNESS MONUMENTS, references and accessories used to perpetuate the original or re-established location of this corner. (c) (d) (e)

Witnesses to corner location Shane Austin.

Drawn by Owen Austin

### LEGEND

- ⊕ Section Corner—as designated
- 5/8 x 18" rebar set
- x-x-x- Existing fence



### SKETCH:

