

U.S. PUBLIC LAND SURVEY MONUMENT RECORD

INSTRUCTIONS: THIS RECORD SHALL SHOW THE LOCATION OF THE CORNER AND SHALL INCLUDE ALL OF THE FOLLOWING NINE ELEMENTS (A THROUGH I)

(A) IDENTIFY THE CORNER BY REFERENCE TO THE U.S. PUBLIC LAND SURVEY SYSTEM

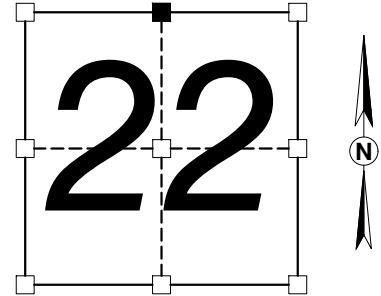
■ = CORNER MONUMENT FOUND

WITNESSES TO CORNER LOCATION: WESLEY KRAEMER

WISCONSIN COORDINATE REFERENCE SYSTEM (WISCRS), GRANT COUNTY, NAD83(2011)

NORTHING: 606475.05

EASTING: 880875.36



SECTION 22, T.7N., R.1W.

(B) DESCRIBE ANY RECORD EVIDENCE, MONUMENT EVIDENCE, OCCUPATIONAL EVIDENCE, TESTIMONIAL EVIDENCE, OR ANY OTHER MATERIAL EVIDENCE YOU CONSIDERED, AND WHETHER THE MONUMENT WAS FOUND OR PLACED.

I found and accepted an aluminum monument at this corner as shown on a tie sheet by Bruce D. Bowden dated 11-16-99. I found two of the ties that are shown on Bowden's tie sheet. I set 2 new ties as illustrated below.

(C) PROVIDE REFERENCE TIES TO AT LEAST 4 WITNESS MONUMENTS. WITNESS MONUMENTS SHALL BE CONCRETE, NATURAL STONE, IRON, BEARING TREES, OR OTHER EQUALLY DURABLE MATERIAL.

(D) SHOW A PLAN VIEW DRAWING DEPICTING THE RELEVANT MONUMENTS AND REFERENCE TIES WHICH IS SUFFICIENT IN DETAIL TO ENABLE ACCURATE RELOCATION OF THE CORNER MONUMENT IF THE CORNER MONUMENT IS DISTURBED.

(E) DESCRIBE ANY MATERIAL DISCREPANCY BETWEEN THE LOCATION OF THE CORNER AS RESTORED AND THE MONUMENT LOCATION OF THAT CORNER AS PREVIOUSLY ESTABLISHED.

None.

(F) WAS THE CORNER RESTORED THROUGH ACCEPTANCE OF (1) AN OBLITERATED EVIDENCE LOCATION, OR, (2) A FOUND PERPETUATED LOCATION?

(2) A found perpetuated location

(G) WAS THE CORNER REESTABLISHED THROUGH LOST CORNER PROPORTIONATE METHODS?

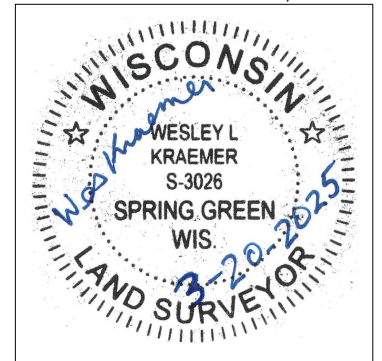
No

(H) SHOW THE DIRECTIONS AND DISTANCES TO OTHER PUBLIC LAND SURVEY CORNERS WHICH WERE USED AS EVIDENCE OR USED FOR PROPORTIONING IN DETERMINING THE CORNER LOCATION.

N/A

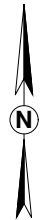
(I) I, WESLEY L. KRAEMER, PROFESSIONAL LAND SURVEYOR, CERTIFY THAT THE CORNER LOCATION SHOWN ON THIS RECORD WAS DETERMINED BY ME AND UNDER MY DIRECTION AND CONTROL AND THAT THIS U.S. PUBLIC LAND SURVEY MONUMENT RECORD IS CORRECT AND COMPLETE TO THE BEST OF MY KNOWLEDGE AND BELIEF.

North Quarter Corner of
Section 22, T.7N., R.1W.
Affix Professional Land Surveyor Seal



Wesley L. Kraemer
SIGNATURE

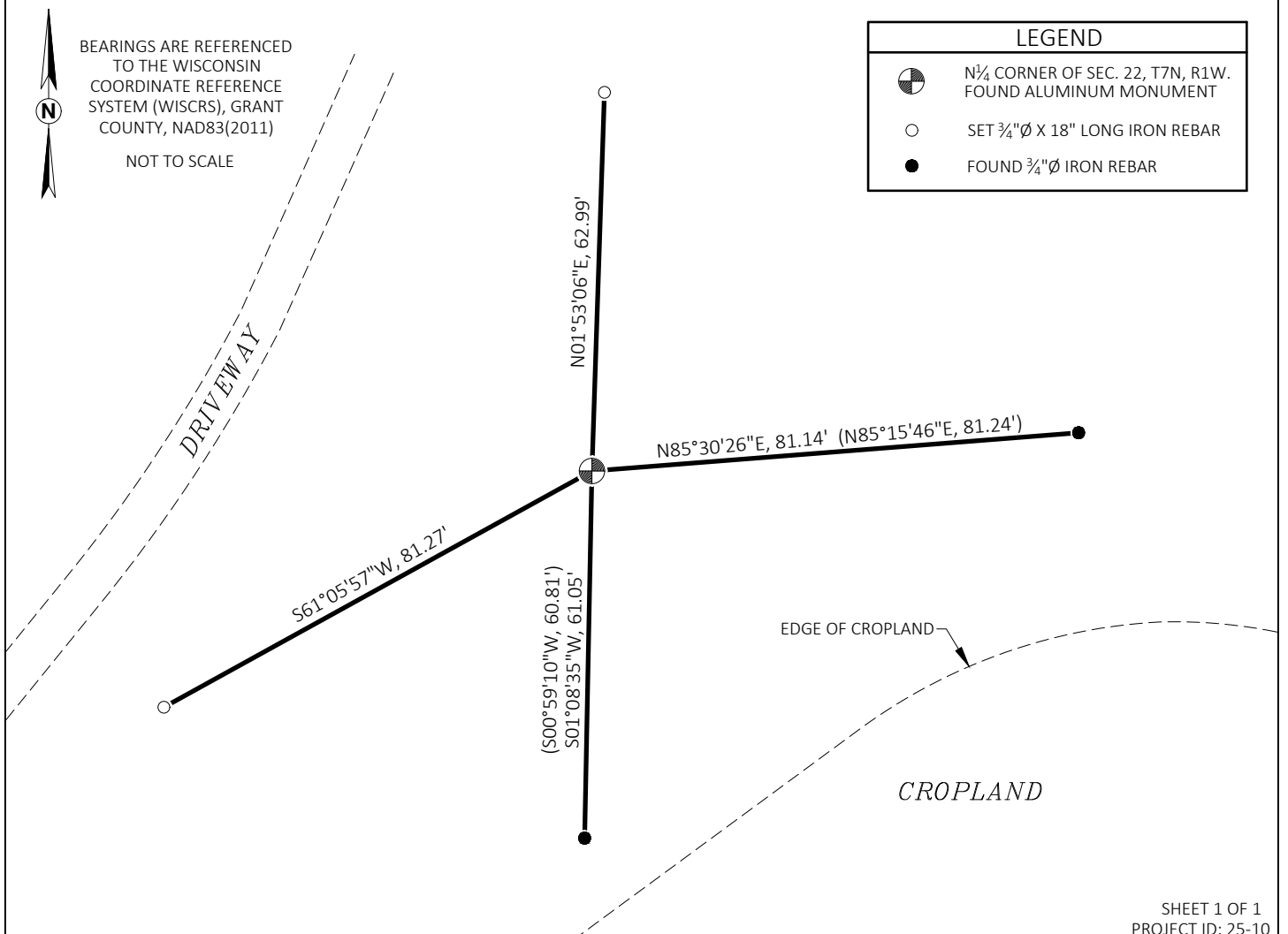
March 20, 2025
DATE



BEARINGS ARE REFERENCED TO THE WISCONSIN COORDINATE REFERENCE SYSTEM (WISCRS), GRANT COUNTY, NAD83(2011)

NOT TO SCALE

LEGEND	
	N¼ CORNER OF SEC. 22, T7N, R1W. FOUND ALUMINUM MONUMENT
	SET ¾"Ø X 18" LONG IRON REBAR
	FOUND ¾"Ø IRON REBAR



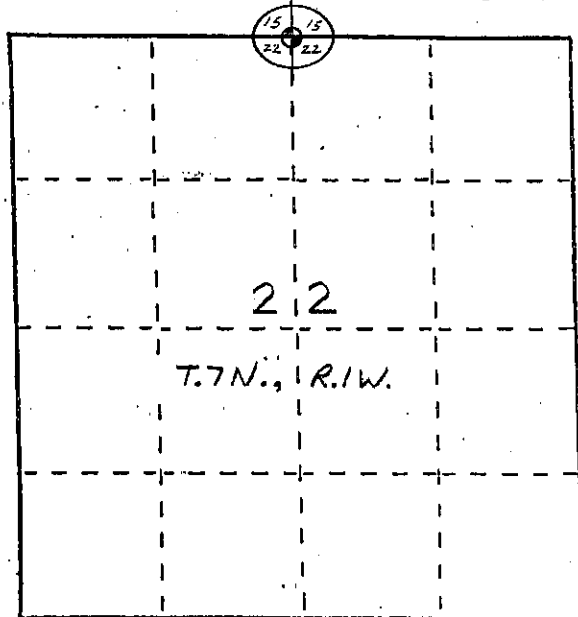
U. S. PUBLIC LAND SURVEY MONUMENT RECORD

INSTRUCTIONS: This record shall show the location of the corner and shall include all of the following nine elements (a through i).

- (a) Identify the corner by reference to the U.S. public land survey system.

○ = Corner monument restored.

The North Quarter Corner of Section 22, Town 7 North, Range 1 West, Castle Rock Township, Grant County, Wisconsin.

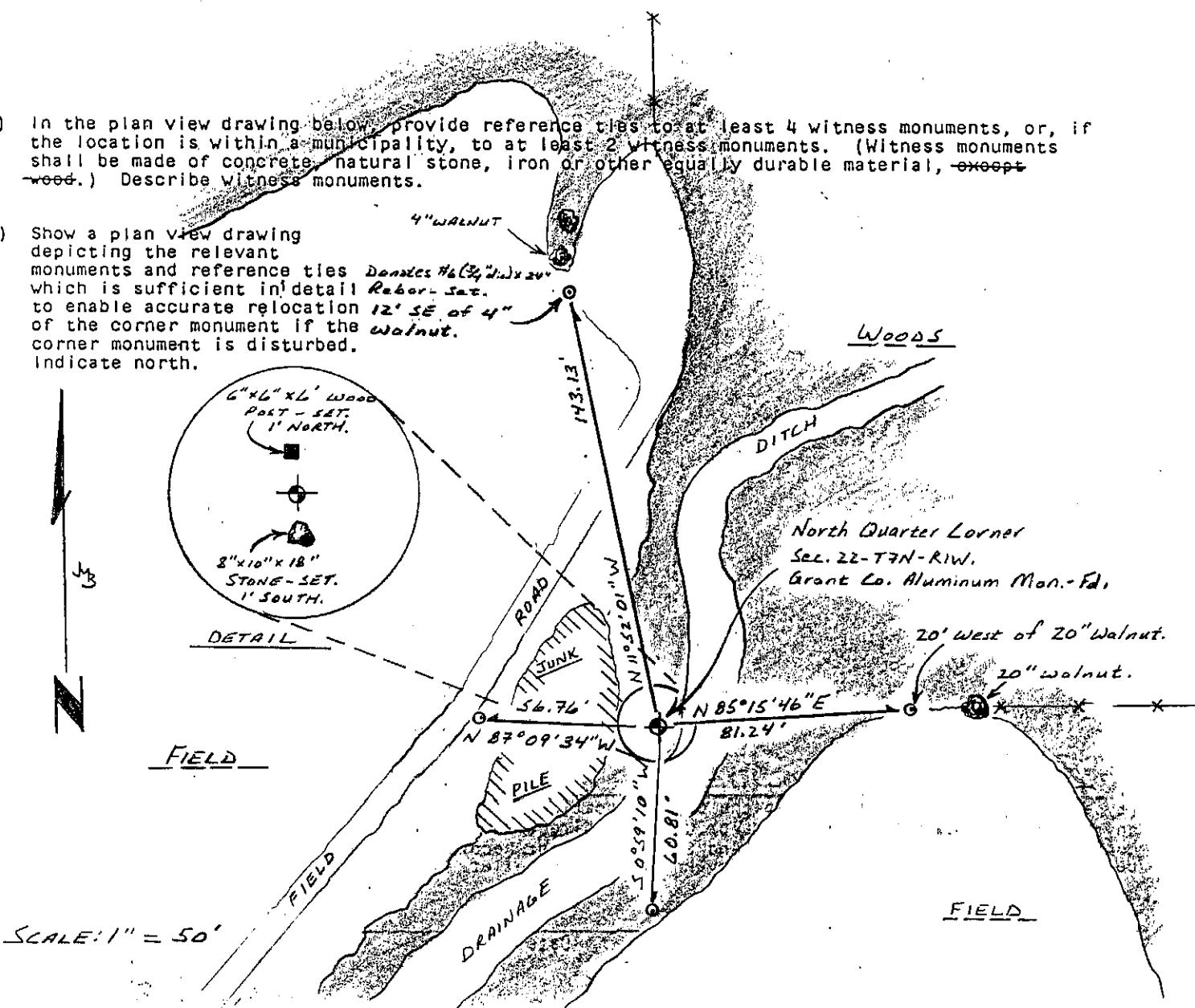


- (b) Describe any record evidence, monument evidence, occupational evidence, testimonial evidence or any other material evidence you considered, and whether the monument was found or placed.

A Grant County driveable aluminum monument was found and accepted as the corner location. Witness monuments were set to perpetuate said location.

- (c) In the plan view drawing below, provide reference ties to at least 4 witness monuments, or, if the location is within a municipality, to at least 2 witness monuments. (Witness monuments shall be made of concrete, natural stone, iron or other equally durable material, ~~except wood.~~) Describe witness monuments.

- (d) Show a plan view drawing depicting the relevant monuments and reference ties which is sufficient in detail to enable accurate relocation of the corner monument if the corner monument is disturbed. Indicate north.



(e) Describe any material discrepancy between the location of the corner as restored or reestablished and the location of that corner as previously restored or reestablished by distance and direction. Show the discrepancy on the plan view drawing under (d), above. Show the distances between the corner as previously restored or reestablished and (1) the corner as restored or reestablished, and (2) to at least 2 of the witness monuments shown on the drawing in (d), above.

None.

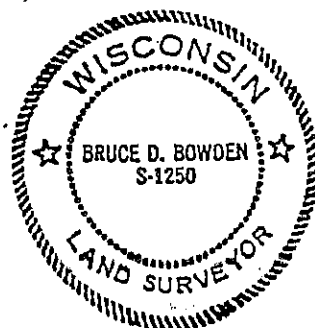
(f) Was the corner restored through acceptance of (1) an obliterated evidence location, or, (2) a found perpetuated location?

A found perpetuated location.

(g&h) Was the corner reestablished through lost corner proportionate methods? If so, show the method, including the directions and distances to other public land survey corners used as evidence or used for proportioning in determining the corner location?

No.

Affix Land Surveyor Seal



(i) I, BRUCE D. BOWDEN,

(type or print name) certify that the corner location shown on this record was determined by me or under my direction and control and that this U.S. Public Land Survey Monument Record is correct and complete to the best of my knowledge and belief.

Signature

Date

Bruce D. Bowden Nov 16, 1999